

JUVENILE CORRECTIONS STUDY COMMITTEE MEETING #5

OCTOBER 1, 2018

JUVENILE CORRECTIONS POPULATION DATA – FOLLOW-UP

Table of Contents

Division of Juvenile Corrections (DJC) Visiting Overview.....	2
Chart 1. Total Visits and Visitors, by Year and Type.....	3
Table 1. Personal Visits per ADP	3
Chart 2. Percent of Unduplicated Youth with Personal Visits	4
Table 2. General Bus Statistics	4
JCF Population and Most Serious Offense.....	5
Chart 3. Most Serious Offense by Commitment Type	6
Chart 4. Commitment Type by Most Serious Offense	6
JCF Population and Risk Scores.....	7
Table 3. Risk Scores	8
Chart 5. Risk Scores by Commitment, Percent of Total	8
Chart 6. Risk Scores by Location, Percent of Total.....	9

Division of Juvenile Corrections (DJC) Visiting Overview

DJC provides a number of opportunities for family and friends to visit with youth including:

- At least 8 hours daily of scheduled visiting hours, with extended hours on Thursdays, weekends, and holidays.
- Chartered bus trips:
 - including 4 trips per month with additional trips in December; and,
 - including routes that begin and end in Milwaukee and alternate through either Madison, or the Fox Valley (Green Bay, Appleton).
- Video-conferencing at regional DJC field offices:
 - Milwaukee
 - Madison
 - Chippewa Falls
 - Wausau
 - Appleton

**VISITOR BUS FOR FAMILIES
(July 2018 - December 2018)**

Dear Families,

Visits are an integral part of the overall treatment program at Copper Lake School/Lincoln Hills School, especially visits from immediate family members. We would like to remind you that a chartered coach bus with a bathroom is available to assist families at no cost. The bus seats 56 individuals on a first come basis and originates in Milwaukee with pick-up areas in Madison and Appleton/Green Bay on a rotating basis.

Additional dates may be added as needed; we encourage you to call (715) 536-8388 and dialing # 2 or check our website at <https://dcp.wi.gov/Pages/AboutDJC/JuvenileCorrections/LincolnHillsCopperLake.aspx> for the most current schedule.

Option A Milwaukee / Madison	Option B Milwaukee / Appleton / Green Bay
Saturday, July 7	Thursday, July 5
Thursday, July 19	Saturday, July 28
Saturday, August 11	Thursday, August 2
Thursday, August 16	Saturday, August 25
Saturday, September 15	Thursday, September 6
Thursday, September 20	Saturday, September 22
Saturday, October 13	Thursday, October 4
Thursday, October 18	Saturday, October 27
Saturday, November 24	Thursday, November 1
Thursday, November 29	Saturday, November 17
Saturday, December 8	Thursday, December 13
Thursday, December 20	Saturday, December 22
Saturday, December 29	Thursday, December 27

Option A: Milwaukee/Madison Areas
Milwaukee Pick-Up
 The bus departs from Lee School 921 West Meinecke Avenue Milwaukee, WI promptly at 7:00 a.m.

- This is a city bus stop and there is additional parking available in the vicinity.
- The bus loads on N 9th Street, between Meinecke Avenue and W. North Avenue.

General Notes

- Reporting timeframes are annual for calendar years 2013-2017 and 6-months for Jan-Jun 2018.
- Population includes youth in juvenile correctional facilities (JCFs) including Lincoln Hills and Copper Lake Schools. Mendota Juvenile Treatment Center (MJTC) is not included.
- Data includes both professional and personal visits with analysis focused on personal visits.
- Data excludes professional and personal visits conducted via video-conference.

Chart 1. Total Visits and Visitors, by Year and Type
(CY 2013 - CY 2017, Jan-June 2018)

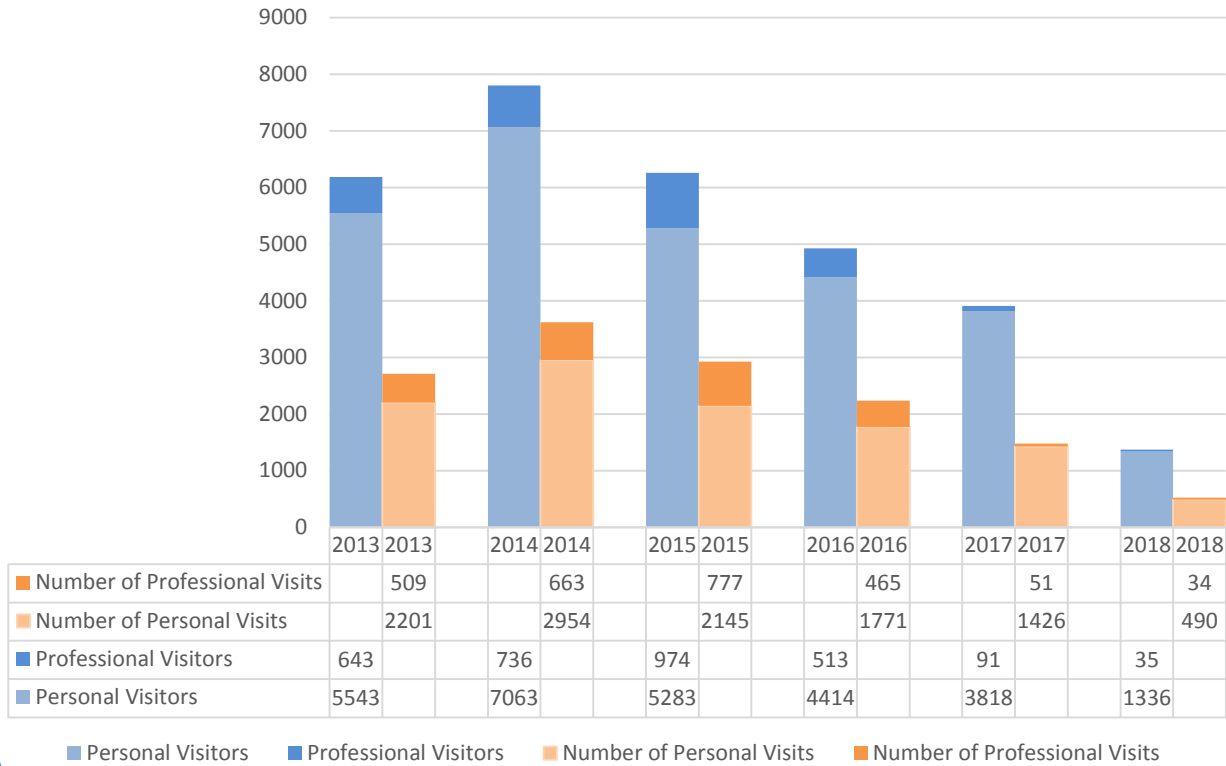


Table 1. Personal Visits per ADP
(CY 2013 - CY 2018*)

CY	Copper Lake School	Lincoln Hills School	Combined
2013	7.3	9.2	9.0
2014	10.4	10.7	10.7
2015	9.5	8.0	8.2
2016	10.5	8.9	9.1
2017	8.6	8.3	8.3
2018*	8.6	6.2	6.4

* CY 2018 data including the Jan-June reporting period has been annualized for comparison.

Chart 2. Percent of Unduplicated Youth with Personal Visits
(CY 2013 - CY 2017, Jan-June 2018)

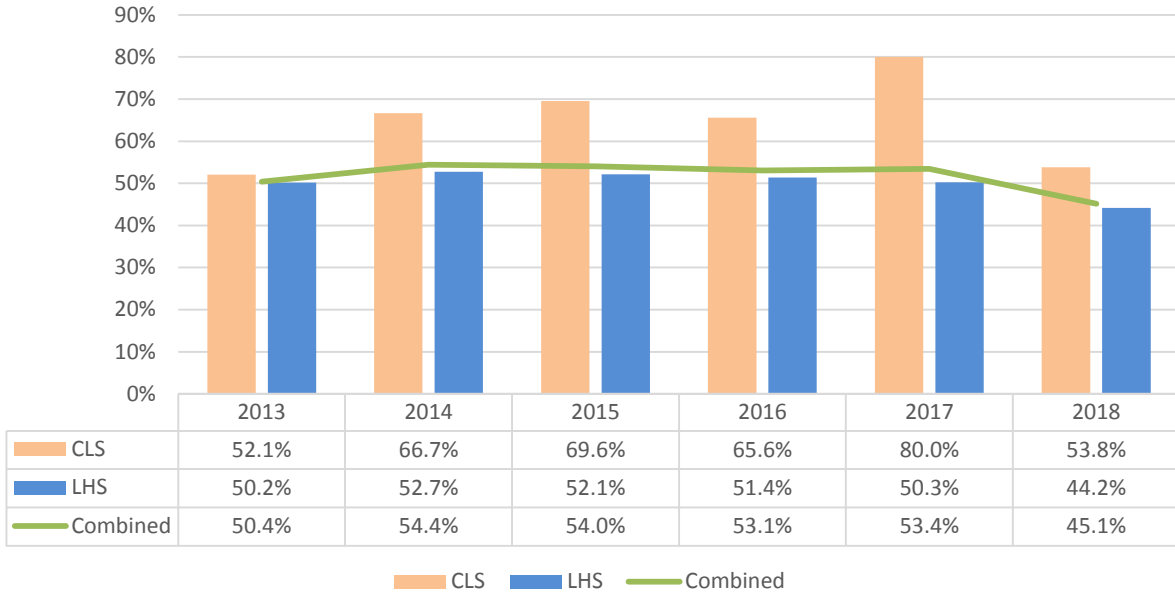


Table 2. General Bus Statistics
(CY 2013 - CY 2017, Jan-June 2018)

CY	Personal Visitors	Total Bus Visitors	% of Personal Visitors Using Bus	Total Bus Trips	Average Bus Visitors Per Trip	Bus Visitors Per ADP*
2013	5,543	1,626	29.3%	52	31	6.6
2014	7,063	1,541	21.8%	52	30	5.6
2015	5,283	1,052	19.9%	55	19	4.0
2016	4,414	975	22.1%	43	23	5.0
2017	3,818	709	18.6%	51	14	4.2
2018 (Jan-June)	1,336	265	19.8%	26	10	3.5
Total	27,457	6,168	22.5%	279	22	NA

* Bus Visitors per ADP for CY 2018 data including the Jan-June reporting period has been annualized for comparison.

JCF Population and Most Serious Offense

Wisconsin DOC Offense Categorization

All offense statutes are categorized according to the Association of State Correctional Administrators (ASCA) Performance-Based Measures System (PBMS) standards. ASCA's PBMS standards were developed to translate the missions and goals of correctional agencies into a set of uniform measurable outcomes.

Association of State Correctional Administrators (ASCA) Offense Category Examples:

- **Violent Crime:** Robbery, battery, sexual assault, negligent manslaughter, and recklessly endangering safety.
- **Property:** Motor vehicle theft, burglary, stolen property (including receiving, transporting, possessing, concealing and selling stolen property), damage to property, arson, and other miscellaneous property crimes.
- **Drug Offense:** Drug trafficking, drug manufacturing, and drug possession.
- **Other Public Order Offense:** Weapons offenses (including unlawful sale, distribution, manufacture, alteration, transportation, possession or use of a deadly or dangerous weapon), resisting obstructing officers, fleeing traffic officers, and non-violent sex offenses.

General Notes:

- Data in the following charts include adult, serious juvenile offender (SJO), and Juvenile (JUV) commitments.
- Data includes commitment start dates from January 1, 2013 through June 30, 2018.

Chart 3. Most Serious Offense by Commitment
(CY 2013 - CY 2017, Jan-June 2018)

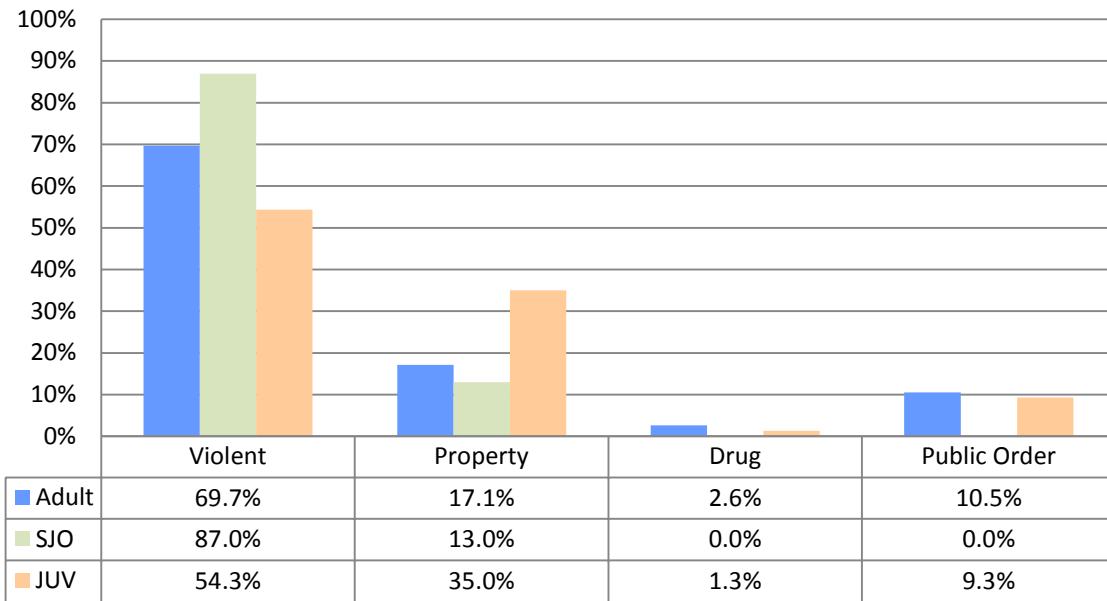
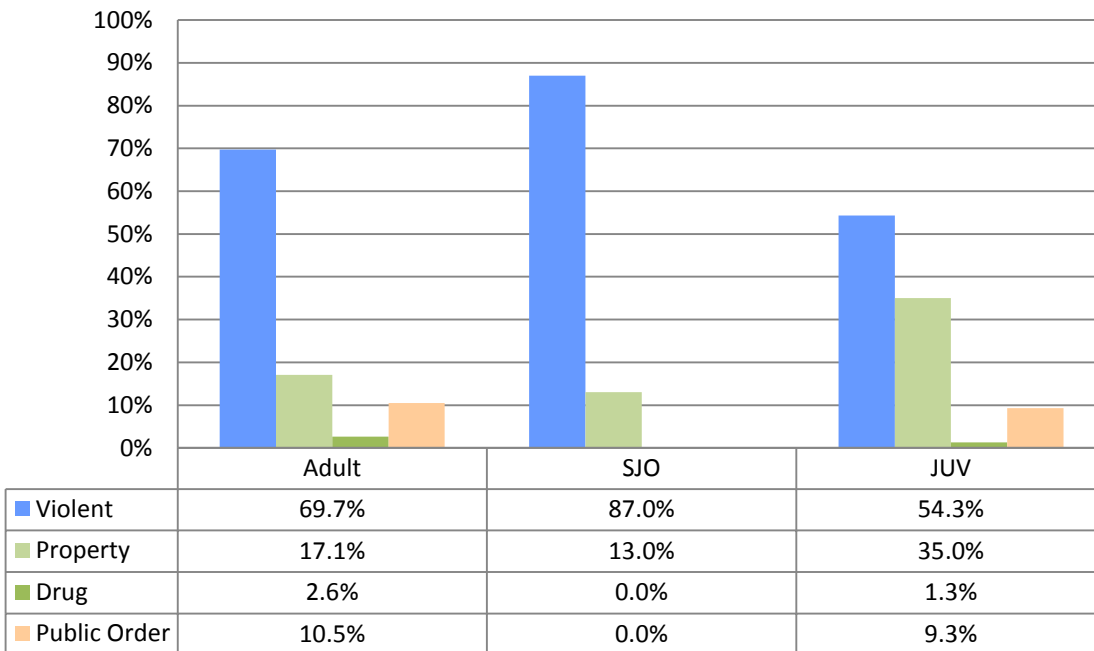


Chart 4. Commitment by Most Serious Offense
(CY 2013 - CY 2017, Jan-June 2018)



JCF Population and Risk Scores

Risk Assessment Overview:

DJC currently uses the COMPAS Youth Version 2 (V2) to assess risk for youth that enter Type 1 facilities.

The COMPAS V2 assessment tool was implemented in late 2016 and is a revision of the COMPAS Youth V1. These assessments are considered the most accurate assessments DJC currently uses for youth under the age of 18.

“The Recidivism Risk V2 scale was developed to predict a new misdemeanor or felony offense arrest within one year of assessment in the community.” *Northpoint, Inc.*

General Notes

- Reporting timeframes include CY 2017 and 6-months for CY 2018 (Jan-Jun).
- The analysis includes only those youth admitted to LHS/CLS for a Juvenile or SJO commitment during the reporting timeframe.
- The total sample size during this period is 182. Data should be interpreted with caution if generalizing to the entire DJC institution population.

**Table 3. Risk Scores
(CY 2017, Jan-June 2018)**

Commitment Type	Risk Score	Female	Male	Total
Juvenile	High	15	78	93
	Medium	4	41	45
	Low	2	7	9
Subtotal		21	126	147
Serious Juvenile Offender (SJO)	High	-	17	17
	Medium	-	11	11
	Low	1	6	7
Subtotal		1	34	35
Total		22	160	182

**Chart 5. Risk Scores by Commitment, Percent of Total
(CY 2017, Jan-June 2018)**

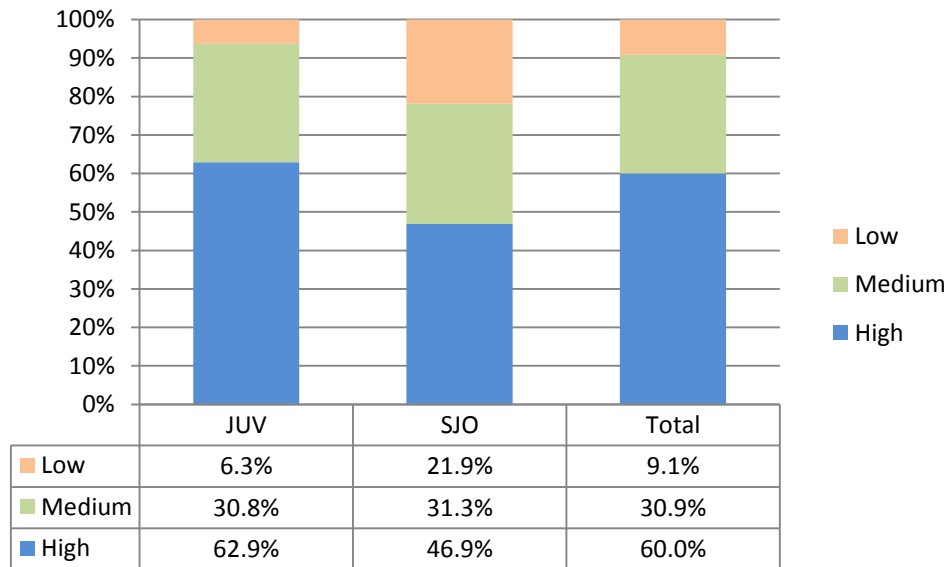


Chart 6. Risk Scores by Location, Percent of Total
(CY 2017, Jan-June 2018)

