



Department of Corrections

DIVISION OF COMMUNITY CORRECTIONS

2024: A Year in Review

FISCAL YEAR 2024

The Division of Community Corrections (DCC) enhances public safety through the management and reduction of client risk. DCC provides supervision and collaboration with community partners to assist clients to change their behavior and repair the harm they have done.

STATE OF WISCONSIN
DEPARTMENT OF CORRECTIONS

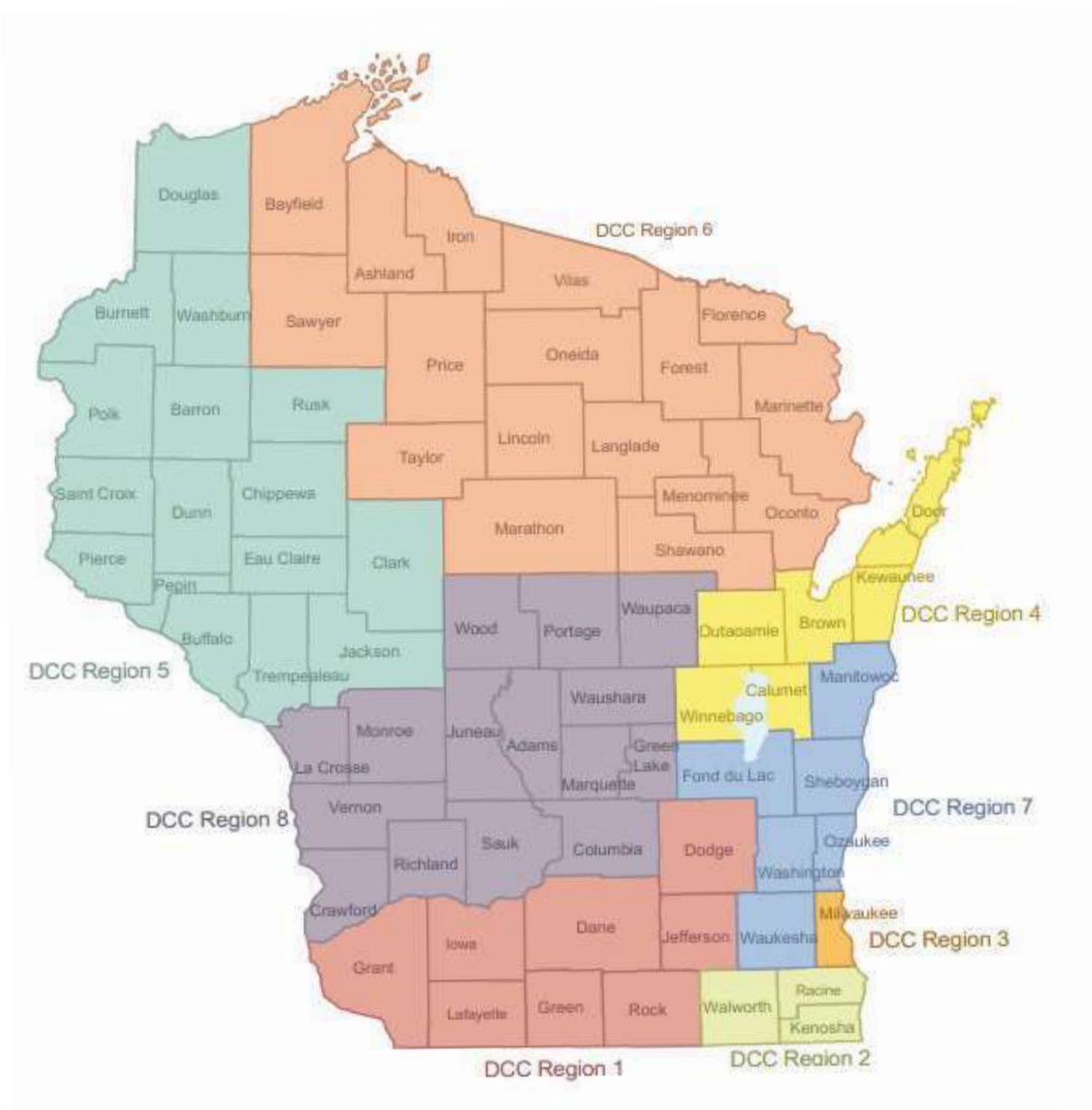
Published December 2024

Page left intentionally blank for digital
version of report

TABLE OF CONTENTS

Community Supervision	5
Regional Population	5
Statewide Population	8
Population by County of Supervision	10
Special Populations	11
Programs and Services	12
Budget, Revenue, and Expenses	13
Client Risk Level and Criminogenic Needs	14
Community Corrections Initiatives	15
Public Dashboards	25

COMMUNITY CORRECTIONS REGIONS



COMMUNITY SUPERVISION

The Wisconsin Department of Corrections (DOC), Division of Community Corrections (DCC) supervises clients placed on probation or released from prison on parole or extended supervision. Supervision is community-based to strengthen the family unit, encourage lawful behavior, and provide local treatment programs.

DCC probation and parole agents supervise clients in the community and aid in sentencing and reentry planning. In addition, they provide investigative services to the courts, the DOC Division of Adult Institutions (DAI), and the Parole Commission. Under limited circumstances, agents supervise both youth released to aftercare programs and clients conditionally released from mental health facilities. Youth are not included in this report.

REGIONAL POPULATION

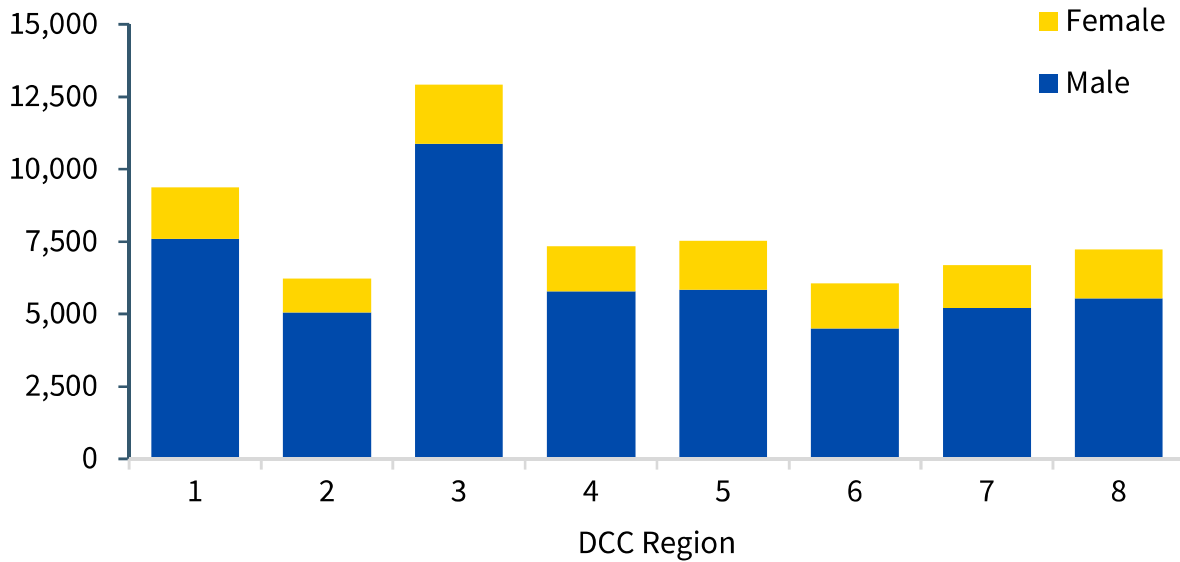
DCC consists of eight regions, each led by a regional chief who oversees the field offices within the region. The overall adult client population, as of June 30, 2024, was 63,359.

Region	Regional Office	# Staff	# Agents	# Clients
Region 1	Madison	254	172	9,380
Region 2	Kenosha	189	129	6,225
Region 3	Milwaukee	374	260	12,915
Region 4	Neenah	210	144	7,349
Region 5	Chippewa Falls	183	122	7,529
Region 6	Rhineland	169	113	6,053
Region 7	Waukesha	184	129	6,682
Region 8	Wautoma	187	125	7,226

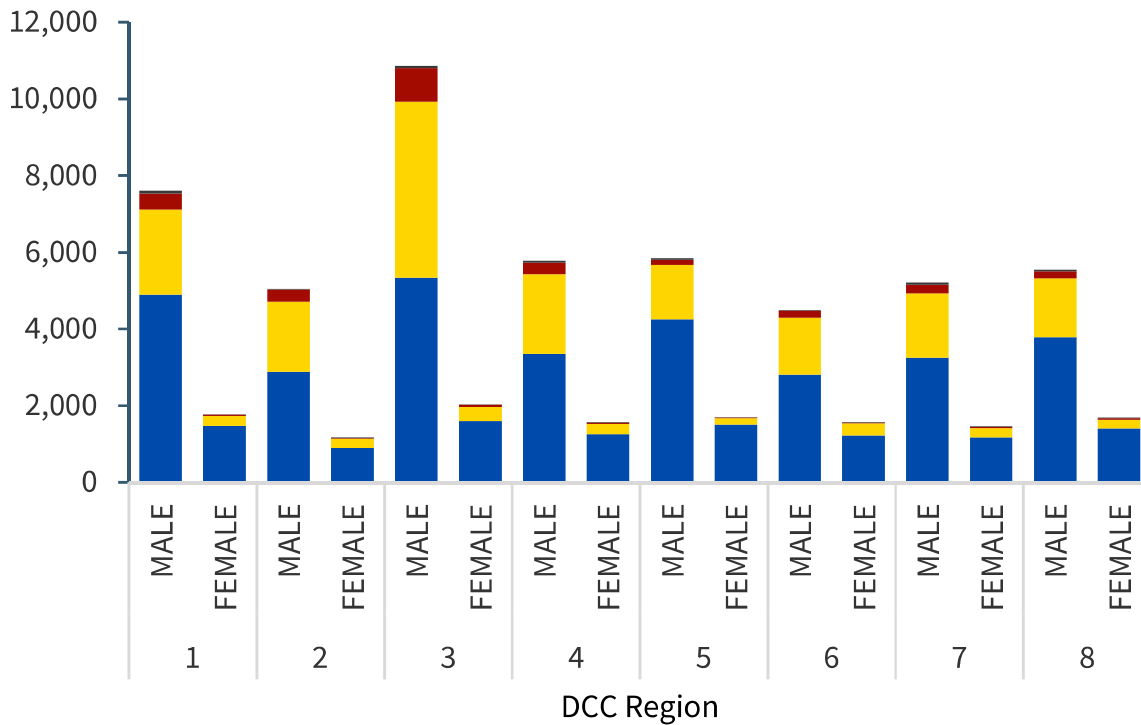
The DCC staff count includes all field staff classifications, including supervisory and support staff. It does not include DCC staff based in DOC Central Office.

REGIONAL POPULATION

POPULATION BY GENDER AND REGION

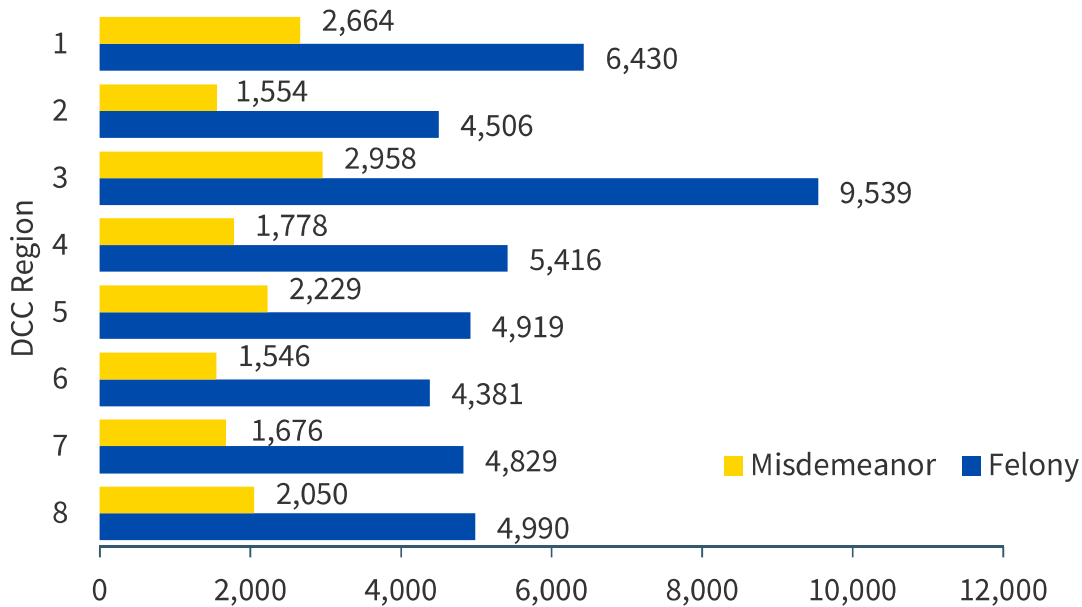


POPULATION BY REGION, CASE TYPE, AND GENDER



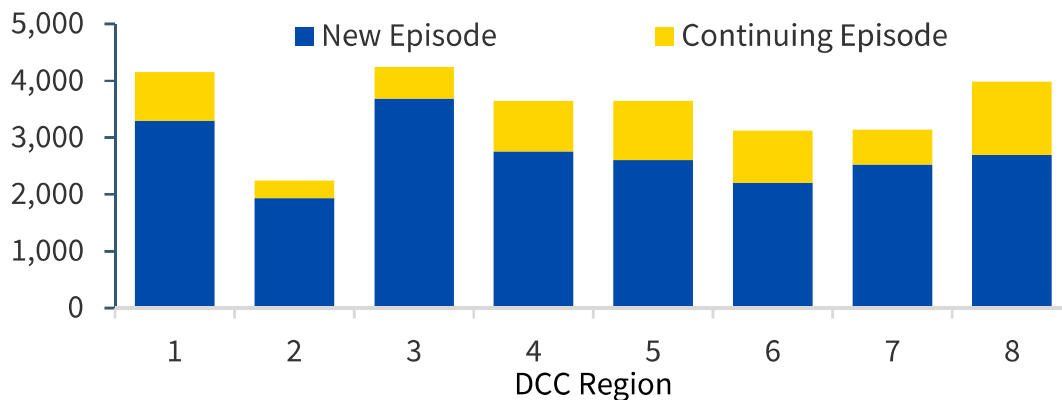
- Probation
- Extended Supervision
- Parole/ Mandatory Release
- Conditional/ Supervised Release

OFFENSE SEVERITY BY REGION



The total count of DCC clients as of June 30, 2024 whose most serious offense was a felony was 45,060. The total count of DCC clients as of June 30, 2024 whose most serious offense was a misdemeanor was 16,411. Not shown in this graph are 1,870 unknown most serious offense severity cases (i.e. interstate compact, probation deferred, and supervised or conditional release type offenses).

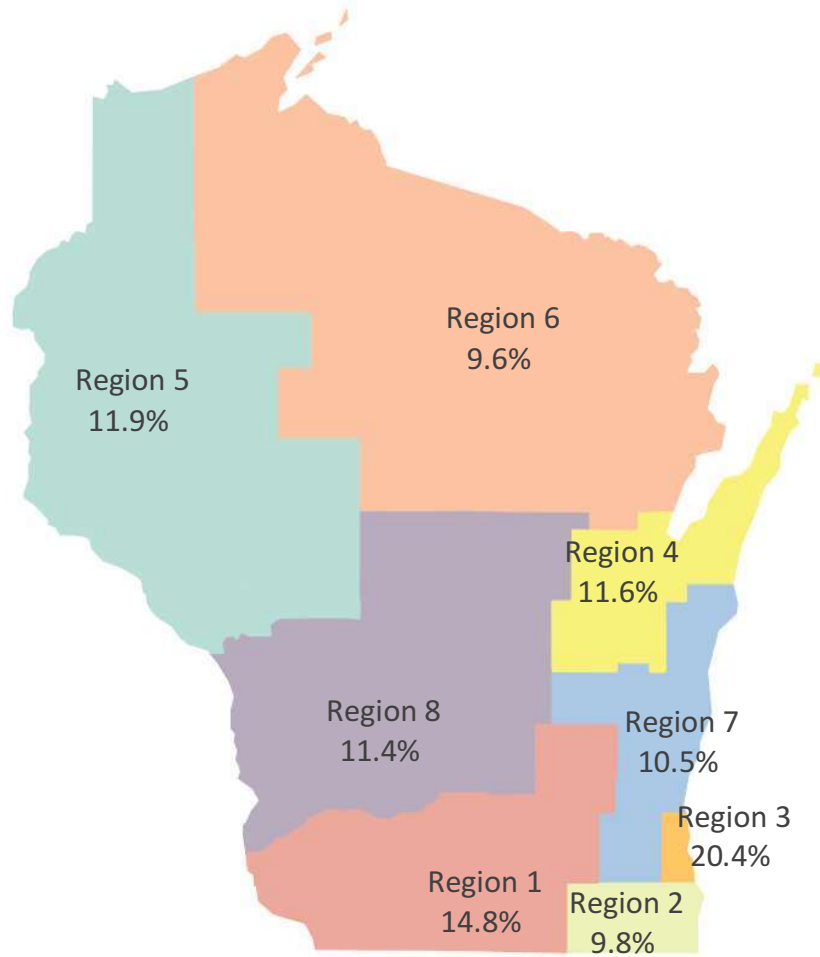
NEW PROBATION CASE COUNT BY REGION



The total number of clients with probation cases that were ordered in fiscal year 2024 was 20,794, encompassing 28,173 probation cases. Of these, 17,194 clients started new episodes of supervision with DCC. Of these, 9,040 clients were new intakes (first time) with DOC.

STATEWIDE POPULATION

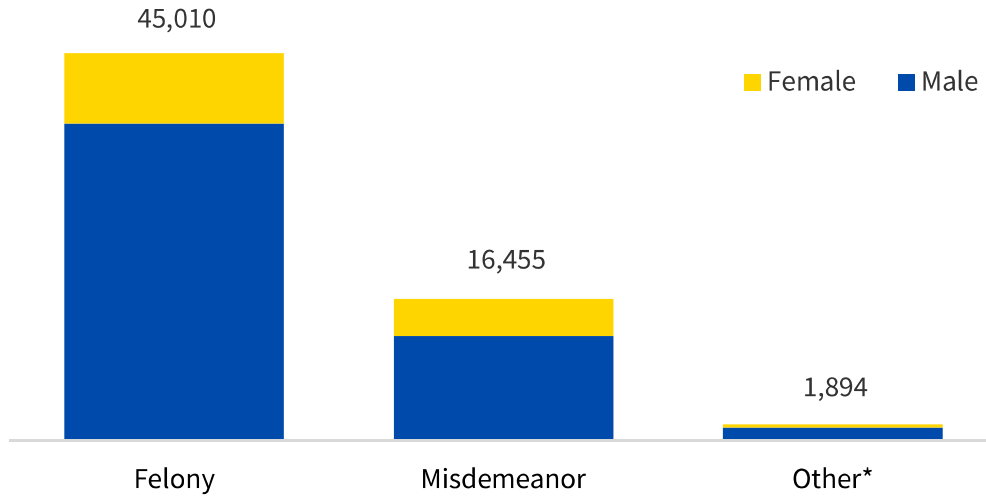
POPULATION BY REGION, PERCENTAGES



GENDER AND SUPERVISION TYPE

Supervision Type	Female	Male	Total
Probation	10,567	30,581	41,148
Extended Supervision	2,080	16,829	18,909
Probation/Mandatory Release	230	2,630	2,860
Supervised and Conditional Release	78	364	442
Total	12,955	50,404	63,359

GENDER AND OFFENSE SEVERITY

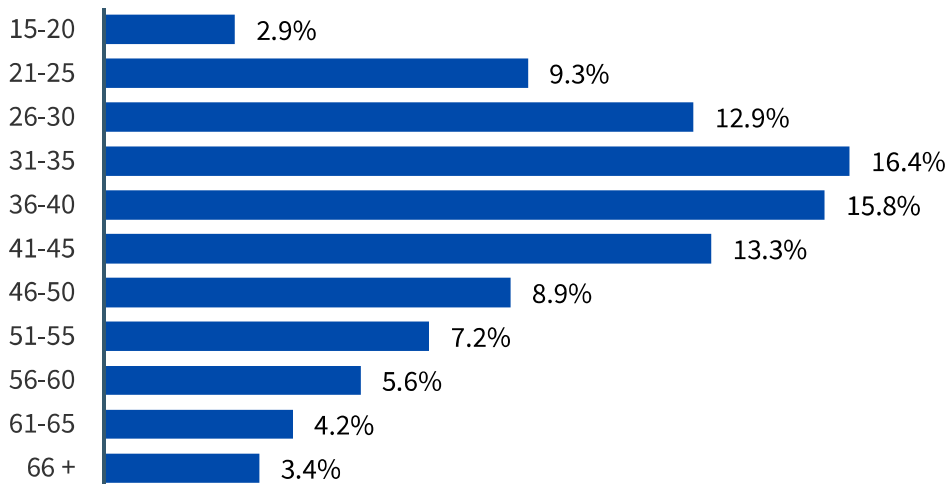


GENDER, RACE, AND ETHNICITY

Category	Males	Females
<u>Race</u>		
White	64.4%	71.4%
Black	29.7%	19.5%
American Indian/Alaskan Native	4.0%	7.7%
Asian or Pacific Islander	1.5%	0.9%
Unknown	0.4%	0.4%
<u>Ethnicity</u>		
Hispanic or Latino*	10.8%	6.4%

*Clients in all race categories can identify themselves as Hispanic or Latino.

AGE



POPULATION BY COUNTY OF SUPERVISION

Reg	County	Total	Reg	County	Total
1	Dane	3,886	6	Ashland/Bayfield/Iron	587
	Dodge	938		Forest/Florence	220
	Grant	454		Langlade	305
	Green	334		Lincoln	300
	Iowa	205		Marathon	1,614
	Jefferson	855		Marinette	590
	Lafayette	167		Menominee/Shawano	592
	Rock	2,541		Oconto	379
	Total	9,380		Oneida	386
2	Kenosha	2,416		Price	149
	Racine	2,655		Sawyer	418
	Walworth	1,154		Taylor	164
	Total	6,225		Vilas	349
3	Milwaukee	12,915		Total	6,053
4	Brown	3,087		7	Fond du Lac
	Calumet	183	Manitowoc		920
	Door	339	Ozaukee		420
	Kewaunee	152	Sheboygan		1,382
	Outagamie	1,643	Washington		756
	Winnebago	1,945	Waukesha		1,994
Total	7,349	Total	6,682		
5	Barron	585	8	Adams	421
	Buffalo	97		Columbia/Marquette	836
	Burnett	260		Crawford	159
	Chippewa	636		Green Lake	351
	Clark	246		Juneau	194
	Douglas	835		La Crosse	1,100
	Dunn	475		Monroe	785
	Eau Claire	1,162		Portage	606
	Jackson	264		Richland	181
	Pepin	35		Sauk	519
	Pierce	416		Vernon	162
	Polk	658		Waupaca	538
	Rusk	188		Waushara	181
	St. Croix	1,196		Wood	1,193
	Trempealeau	282		Total	7,226
	Washburn	194			
Total	7,529				

Population as of June 30, 2024. County of supervision is by agent number. Some DCC units supervise clients in multiple counties and are combined for reporting.

SPECIAL POPULATIONS

SEX OFFENDER REGISTRY PROGRAM

The Sex Offender Registry Program (SORP) is responsible for monitoring and tracking clients convicted of certain sex crimes. In addition, SORP provides information to promote community awareness and increase public safety. The table below describes the SORP population as of June 30, 2024.

Description	Number of Registrants
Type of Conviction	
Adult	26,472
Juvenile Adjudication or Minor	474
Total	26,946
Supervision Status	
Incarcerated	6,173
Not Incarcerated (Total)	20,773
<i>Active Community Supervision</i>	6,123
<i>Terminated from Community Supervision</i>	14,650
Total	26,946

CLIENT MONITORING POPULATION

The DOC Electronic Monitoring Center provides centralized electronic monitoring for clients as an alternative to incarceration. The data below is current as of July 1, 2024.

Monitoring Method	Number of Clients
GPS Tracking-Sex Offenders*	2,278
GPS Tracking-Discretionary**	1,241
Portable Breath	976
Radio Frequency (RF)	285
RF and Continuous Alcohol Monitoring	2

*Includes youth

** Includes sex offenders and non-sex offenders

PROGRAMS AND SERVICES

Also known as Purchase of Offender Goods and Services (POGS), these funds are used to purchase products or services for the benefit of clients. This table gives each program type's total cost in fiscal year 2024 and its proportion of the total programs and services budget.

Description	Amount	%
Residential Services Programs	\$18,882,002	52.0%
Transitional Housing Services	\$4,743,246	13.1%
Substance Use Disorder Services	\$1,933,391	5.3%
Sex Offender Treatment Services	\$1,887,848	5.2%
Supportive Housing Services	\$1,755,098	4.8%
Community Transition Services Centers	\$1,447,796	4.0%
Shorter Term Housing	\$1,039,343	2.9%
Domestic Violence Services	\$694,993	1.9%
OWI Services	\$578,432	1.6%
Certified Peer Specialists	\$543,681	1.5%
Cognitive Behavioral Programs	\$469,323	1.3%
Substance Use Screening	\$341,364	0.9%
Medication Assisted Treatment	\$319,535	0.9%
Drug Treatment Courts	\$308,655	0.9%
Community Reintegration Services	\$304,200	0.8%
Rock County Education & Criminal Addictions	\$289,680	0.8%
Miscellaneous Goods and Services	\$254,638	0.7%
Employment, Community Service & Vocational	\$218,478	0.6%
Sex Offender Treatment Alternative to Revocation	\$132,750	0.4%
Anger Management Services	\$112,488	0.3%
WI Tribal Community Reintegration Programs	\$50,000	0.1%
Psychiatry Services	\$4,194	0.01%
Total*	\$36,311,135	100.0%

* Individual amounts may not add up to totals, due to rounding.

BUDGET, REVENUE, AND EXPENSES

This table includes total General Purpose Revenue (i.e. tax dollars) allocated to DCC, as well as Program Revenue (e.g., client supervision fees) to support operations.

Description	Program Revenue	Total
Total Budget	\$16.5 M	\$250.8 M
Client Daily Cost	\$0.30	\$11.13
Full Time Equivalency (Positions)	11.70	1,973.08

Court Obligations

Any payment ordered by a court in connection with a criminal case is collected by either the court itself or by the DOC, and reissued as statutorily required. Some payments are held until a payee can be identified; other payments are used to cover administrative costs.

Type of Court Obligation	Amount Collected
Restitution	\$5,058,223
Court, Attorney Fees, Fines, & Other Court Cases	\$2,354,805
Victim/Witness & DNA Surcharge	\$1,699,452
Other Surcharges & General Funds	\$92,358
Total	\$9,204,838

Supervision Fee Payments

Clients are required to make regular monthly payments while under supervision. These funds are used (in lieu of tax dollars) to partially fund DCC operations.

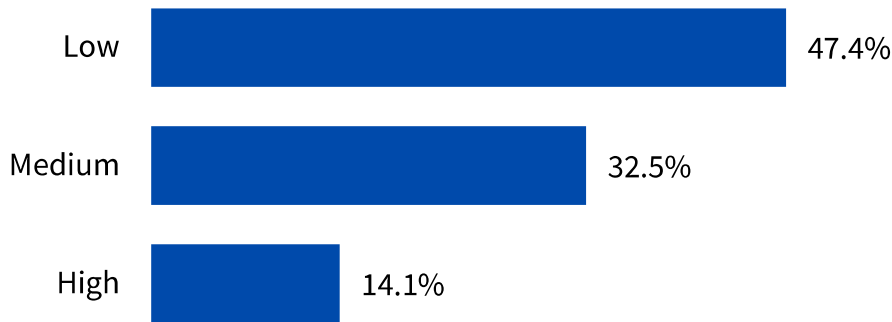
Type of Payment	Amount Collected
Regular Monthly Payment	\$5,561,860
Tax Refund Intercept*	\$861,342
Total	\$6,423,202

* Wisconsin tax refund and state lottery winnings intercepted from clients who did not make their regular payment.

CLIENT RISK LEVEL AND CRIMINOGENIC NEEDS

The following graphs reflect the recommended risk level and needs of the overall DCC client population who had completed a risk-needs assessment as of June 30, 2024. The DOC utilizes the COMPAS assessment, which is a research-based risk assessment tool that identifies clients' risk level and criminogenic needs in order to provide effective supervision and treatment.

CLIENT RISK LEVEL



The total percentage is less than 100%, because some clients were in intake status at the time of the report (~ 6%).

CRIMINOGENIC NEEDS

Criminogenic needs are attributes of clients that are linked to criminal behavior. Effective correctional treatment targets these dynamic criminogenic needs through interventions and case plans.



Each percentage reflects the proportion of the assessed DCC population that has that criminogenic need.

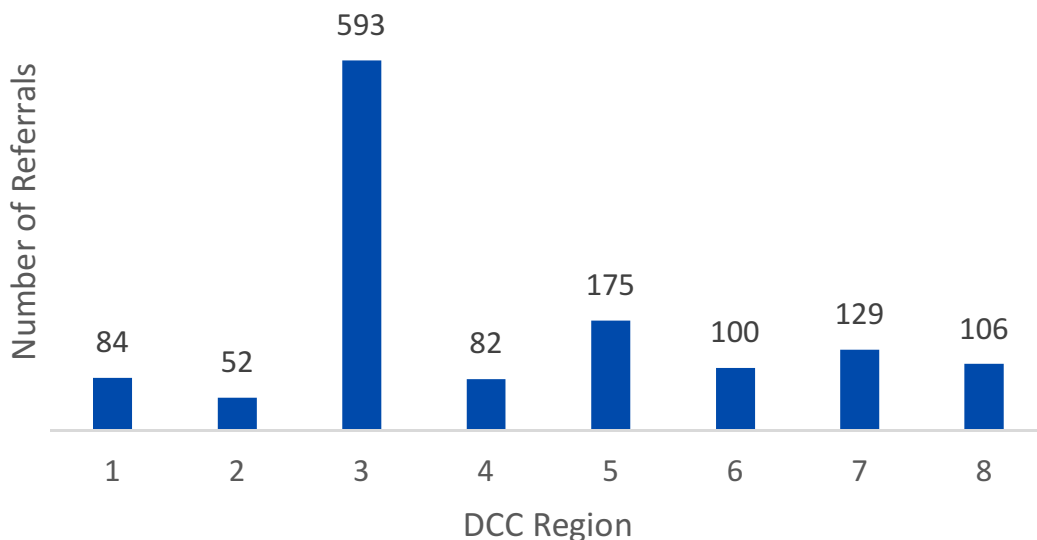
COMMUNITY CORRECTIONS INITIATIVES

PSYCHOLOGICAL SERVICES

Psychological Services assists agents, supervisors, community partners, courts, and others to identify and develop mental health services that may aid a client in being successful in the community during their period of supervision and upon discharge. Psychologists offer the following services:

1. Mental health evaluations for presentence investigations
2. Court ordered evaluations
3. Evaluations to render recommendations for treatment or case management
4. Evaluations for the need for psychiatric referral/intervention
5. Evaluations for Alternative to Revocation (ATR) placements
6. Time-limited individual and group therapy sessions
7. Sex offender treatment evaluations
8. Sex offender risk assessments

There was a total of 1,321 referrals across all regions, a 10% increase from fiscal year 2023. In response to the increasing need for mental health services, an additional Chief Regional Psychologist position was approved in fiscal year 2024 and filled at the start of fiscal year 2025. The graph below summarizes referrals received by Psychological Services by region for fiscal year 2024.



RECOVERY HOUSING

Recovery residences are sober environments that require residents to abstain from alcohol and other non-prescribed drugs. These recovery environments offer peer-to-peer support and professional clinical services. DCC Central Office has created a list of pre-approved recovery residences based on Wisconsin Association of Sober Housing (WASH) and National Alliance of Recovery Residences (NARR) standards. DOC staff have worked in conjunction with WASH staff on the vetting process, which includes an interview with facility management and collaboration with the Regional Program and Policy Analyst. Residences on the list are approved for clients to reside within their county of supervision and can be considered a permanent residence for purposes of intrastate transfers.

DCC TREATMENT UNIT

The DCC Treatment Unit provides effective evidenced-based correctional programming opportunities to clients that further enhance reentry efforts and successful involvement in the community. Programming is provided in the primary need areas of substance use, cognitive behavior, domestic violence, and anger management.

During fiscal year 2024, the DCC Treatment Unit developed and implemented the Substance Use Disorder (SUD) Aftercare Programming level of care services. In collaboration with DAI, individuals who completed comprehensive programming and who are still in need of additional support may be referred upon release from an institution or while currently on supervision in the community. During fiscal year 2024, 44 clients were enrolled into this pilot program. The data below summarizes the services provided by the DCC Treatment Unit for fiscal year 2024.

Services Provided	# of Enrollments
SUD Diagnostic Assessment	607
SUD Treatment	193
Domestic Violence Assessment	81
Domestic Violence Programming	45
Anger Management	28

FIRST JOB LAB IN DCC OFFICE OPENS

The DOC and Department of Workforce Development (DWD) celebrated the opening of the first job lab for within a DCC Probation and Parole office. This job lab is located at 4014 Richards Street in Milwaukee and operates with staff from DOC and DWD. The lab has four computer workstations available for clients and provides various employment services related to career readiness, resume development, and job search assistance and services for veterans and individuals with disabilities. This collaboration provides clients with services and resources that reduce barriers to employment. By the end of calendar year 2024, there will be a second DCC job lab location available within the DCC Janesville probation and parole office.



GENDER RESPONSIVITY IN PROGRAM EVALUATION

To align with evidence-based practices in working with justice-involved women, DCC has focused on effective gender-responsive interventions. Staff across the state have participated in training on the general principles of gender responsivity. The goal will be to provide this training to all staff who have women on their caseloads.

DCC employees who oversee community provider contracts have been trained in the Women's Inventory of Needs and Strengths (WINS) Agency Assessment to evaluate programming provided to female clients utilizing a gender responsive approach. This assessment was developed by Bauman Consulting Group (BCG) and is based on best practices and empirical research on evidence-based practices, gender-responsive principles, trauma-informed approaches, and implementation science.

The WINS Agency Assessment focuses on ten core areas, including environment, operational practices, leadership, and management. The assessment process involves the review of records and documents, observation of agency practices, and interviews, surveys, and focus groups with agency personnel and clients. Agencies are provided with a written report detailing both the needs and strengths of the agency.

In fiscal year 2024, DOC staff trained in the WINS assessment participated in two training assessments alongside representatives from BCG. The first assessment was led by BCG, with DOC staff observing and assisting. The second assessment was led by DOC staff with BCG staff assisting. DOC staff also worked with BCG to identify improvements to the training plan, which will be implemented in fiscal year 2025.

DOMESTIC VIOLENCE RISK ASSESSMENT TOOL

To improve efforts at addressing the risk and needs of clients involved in domestic violence behaviors, DCC implemented the Ontario Domestic Assault Risk Assessment (ODARA). The ODARA is a risk assessment trailer tool to identify the risk of future assaults against intimate partners. It is the first empirically developed and validated domestic violence risk assessment tool to assess risk of future intimate partner violence and the frequency and severity of these assaults. The ODARA consists of 13 yes or no questions answered mainly during intake and/or file review.

Each region identified agents for training and locally created the business process for completing the tool on the targeted population. The training is free, self-paced, and provided in an online format. The agents began training and initiating assessments on the identified clients in July 2024. DCC received positive feedback from agents who are excited to have this tool available.

RESTORE PROGRAM OPPORTUNITY

The RESTORE program (Responsibility Equals Sanction Time Opportunity Reduction Earned) provides skill building and risk reduction opportunities for clients serving a short-term sanction at Milwaukee Secure Detention Facility (MSDF). The program includes emotional regulation, problem solving, anger management, social skills, cognitive restructuring, dialectical behavioral therapy and individual skilled based programming. Clients who successfully completed the 60- or 90-day program earned a 15-day reduction in their sanction time. Since its implementation in 2021, the program has expanded to include men and women in both Region 3 and Region 7. To date, 314 clients have completed the RESTORE program.

CERTIFIED PEER SPECIALISTS EXPANDED

The role of a Certified Peer Specialist is to build relationships with and provide encouragement for clients by offering support services, such as mentorship and coaching. Certified Peer Specialists work in collaboration with DOC, local police departments, employment organizations, and community organizations. Certified Peer Specialists assist clients in identifying community resources and providing support relevant to their needs.

In fiscal year 2024, the Certified Peer Specialist contract with Wisconsin Community Services was expanded to include specialists working in conjunction with the Medications for Opioid Use Disorder (MOUD) team at Milwaukee Secure Detention Facility (MSDF). The following chart provides a list of service providers by DCC Region.

Region	Service Providers
1	Safer Communities - in person (Dane county)
2	Wisconsin Community Services - Hybrid
3	Wisconsin Community Services - Hybrid
4	Epic Epiphany's – Virtual (all counties) Newcap – Hybrid (Brown county)
5	Epic Epiphany's – Hybrid (all counties) Whole Life Services – Hybrid (Washburn, Polk, Barron, and Burnett counties)
6	7-Gen Recovery Navigators - in person (Lac du Flambeau)
7	Wisconsin Community Services – Hybrid (Waukesha, Washington, and Ozaukee counties)
8	Epic Epiphany's – Hybrid (all counties)

DCC CONTINUOUS QUALITY IMPROVEMENT

DCC continued their commitment to onboard all Corrections Field Supervisors and Probation and Parole Agents in the Continuous Quality Improvement (CQI) Coaching and Fidelity model. This model supports staff in providing evidence-based risk reduction strategies during quality contact sessions with clients.

On June 1st, 2024, Administrative Directive (AD) 24-02 CQI Coaching and Fidelity Model went into effect to provide policy and procedure for CQI Coaching & Fidelity and Evidence-Based Peer Learning Groups (EBPLG). The purpose of the CQI Coaching and Fidelity Model and the EBPLG is to utilize coaching and peer feedback to assist Agents with improving their interactions with clients in a manner that targets risk reduction. AD 24-02 outlines the roles of the Agents, Corrections Field Supervisors, and Implementation and Fidelity Coaches in these efforts.

DCC also continued their commitment to train all Corrections Field Supervisors and Probation and Parole Agents with the Core Correctional Practice (CCP) curriculum. This training focuses on incorporating the risk, need, responsivity, and fidelity principles into appointments with clients. Additionally, Core Correctional Practices supports adherence to the four-part appointment model and targets criminogenic need areas to support behavior change. During fiscal year 2024, 12 two-day Core Correctional Practices training sessions were held. Several CCP Booster sessions for Corrections Field Supervisors and Agents were held around the state.

VIRTUAL PROGRAMMING

DCC continued to expand virtual services for clients in fiscal year 2024 to eliminate barriers to access related to transportation, childcare, and lack of services (in rural areas). Programs across the state have been opened up to referrals outside of their home regions, allowing clients increased access to treatment. Some groups traditionally held in-person have transitioned to a hybrid model, with some clients attending in-person and others virtually.

DCC OPIOIDS INITIATIVES

DCC has continued to expand programs, services, and resources for clients who struggle with opioid addiction. These initiatives include the following:

1. A new program at the Milwaukee Secure Detention Facility (MSDF) serves both DCC clients and Division of Adult Institutions (DAI) Persons in our Care (PIOC) by providing medication for Opioid Use Disorder (OUD). The program is designed to continue or begin medications for those who meet diagnostic criteria for OUD.
2. DOC hosted their third annual virtual staff training conference (approximately 400 attendees) on Opioids, Harm Reduction, Addiction Stigma, Medication-Assisted Treatment (MAT), and Staff Wellness.
3. In partnership with the University of Wisconsin-Madison's UW Voices for Recovery Program, the DOC has increased access to naloxone (Narcan) in DCC unit offices. Additionally, DOC-produced harm reduction boxes were added to many DCC unit offices containing additional resources for field staff, including fentanyl test strips.
4. DCC continues to expand the availability of Peer Support Services, especially for rural areas. This fiscal year, DCC has created a statewide peer support contract and has expanded its use of telehealth.
5. The DOC Opioid Advisory Team provided support and assistance to staff for difficult opioid cases. They regularly review reported recent non-fatal overdoses that were similar to cases reviewed by the DOC Overdose Death Review Team.

DCC OPIOID INITIATIVES

6. The DOC Overdose Death Review Team completed overdose death reviews every month. The team reviews cases, identifies gaps, and makes policy and procedure recommendations to save the lives of clients.

7. DCC has created additional education and guidance documents related to the supervision of clients with OUD. These include topics such as managing grief as helping professionals and supporting clients that are grieving substance-related deaths.

8. Funding for MAT/MOUD has been expanded for the entire state and for all forms of MOUD (methadone, naltrexone, and buprenorphine) for clients on supervision.

9. DCC is finalizing contracts for mobile MAT/MOUD options for areas without these resources.

10. Sober Living standards and contract language has been approved and will be implemented in fiscal year 2025.

DCC secured additional resources to combat the opioid crisis plaguing our communities, including Opioid Settlement Funds through the Department of Health Services and a federal grant through the Substance Abuse and Mental Health Services Administration. With the hiring of an Opioid Initiatives Director, DCC will continue to build upon the progress made in recent years.

INTERNAL REPORTING

DCC has used regularly updated dashboards about their population and staff since 2022. The Revocations, Sanctions, and Holds Dashboards allow leadership to monitor trends and drill down to specific regions, units and agents. The DCC Client Demographic Dashboards provide trends by county and zip code, and are used to assess the need for increased culturally responsive programming. DCC leadership uses both dashboards to determine where particular phenomena are occurring and take direct action.

PARTNERSHIP FOR PROGRAM EVALUATION

In fiscal year 2024, DOC was selected for a collaboration with the University of Wisconsin-Madison's La Follette School of Public Affairs. DOC staff worked with graduate students of the La Follette School to complete a comprehensive initial evaluation report of DCC's Evidence-Based Response to Violations (EBRV) program. Over the course of five months, the La Follette School focused on the impact the EBRV program had on recidivism, sanctions, violation decisions, and agent workloads.

Evidence indicated that the implementation of the EBRV program was related to a decrease in revocations, especially revocations to prison and revocations related to drug-related violations. They also found that over-prescription of responses has decreased since EBRV implementation, while under-prescription has increased. The report included a series of recommendations to support further evaluation of the EBRV program. Based on the report recommendations, DCC leadership is working on a comprehensive strategy for subsequent re-evaluation. Additionally, DCC is developing multiple audits targeting various aspects of community supervision practices. The audits will serve as routine tools for monitoring policy-driven supervision procedures.

PUBLIC DASHBOARDS

In collaboration with the DOC's Research and Policy Unit, DCC has several public dashboards that are updated on a regular basis.

MONTH-END COMMUNITY CORRECTIONS

Month-end snapshots of the community supervision population, including a variety of demographics, supervision location, most serious offense, supervision case type, and level of supervision. Available at:

<https://doc.wi.gov/Pages/DataResearch/DCCMonthEndDB.aspx>

HOLDS AND SHORT-TERM SANCTIONS

Weekly snapshots of data related to holds and short-term sanctions that have occurred on and since March 2, 2020. Available at:

<https://doc.wi.gov/Pages/DataResearch/HoldsShortTermSanctionsDB.aspx>

REVOCATIONS AND

OTHER RESPONSES TO VIOLATIONS

Includes revocation rates, trends, reasons for revocations, and trends in other responses to violations. Available at:

<https://doc.wi.gov/Pages/DataResearch/RevocationsResponsesDB.aspx>

OVERDOSES AMONG CLIENT POPULATION

A monthly snapshot of data related to suspected overdoses among clients on community supervision. Available at:

<https://doc.wi.gov/Pages/DataResearch/OverdoseDashboard.aspx>

Additional public dashboards are in development and are on track for publication by the end of 2025. These dashboards will provide essential information regarding admissions to, and releases from, community supervision. Future dashboards will report on recidivism while on community supervision.

**Page left intentionally blank for digital
version of report**

**Page left intentionally blank for digital
version of report**

For further information, contact:

<https://doc.wi.gov/Pages/Home.aspx>

<https://doc.wi.gov/Pages/DataResearch/DataAndResearch.aspx>

Wisconsin Department of Corrections
3099 East Washington Avenue
Post Office Box 7925
Madison, Wisconsin 53707-7925

Phone: (608) 240-5300

Email: DOCGeneral@wisconsin.gov