

DATA TREND SERIES

Prison Point-in-Time Populations: 2000-2018



August 2019

**Division of Adult Institutions
Office of the Secretary - Research and Policy Unit**

Inquiries regarding this report may be directed to the Data and Research Inquiries mailbox:

WIDOCDataandResearchInquiries@wisconsin.gov

State of Wisconsin
Department of Corrections

DATA TREND SERIES

Prison Point-in-Time Populations: 2000-2018

August 2019

Table of Contents

| | |
|--|----|
| Introduction | 3 |
| Wisconsin Prison Populations | 6 |
| Populations by Race..... | 7 |
| Populations by Age..... | 8 |
| Populations by Most Serious Offense..... | 9 |
| Populations with Any Drug, Sex, or Operating While Intoxicated Offense..... | 10 |
| Populations by Estimated Time Left to Serve..... | 11 |
| Appendix A: Methodology | 12 |
| Appendix B: Tables | 14 |
| Table 1. Total Point-in-Time Prison Populations..... | 14 |
| Table 2. Point-in-Time Prison Populations by Gender | 15 |
| Table 3. Point-in-Time Prison Populations by Race..... | 16 |
| Table 4. Point-in-Time Prison Populations by Ethnicity | 17 |
| Table 5. Point-in-Time Prison Populations by Age | 18 |
| Table 6. Point-in-Time Prison Populations by Most Serious Offense..... | 19 |
| Table 7. Point-in-Time Prison Populations with Any Drug, Sex, or OWI Offense | 20 |
| Table 8. Point-in-Time Prison Populations by Estimated Time Left to Serve..... | 21 |

Introduction

The Wisconsin prison population has grown substantially over the last 29 years, more than tripling from 1990 to 2018. To present a complete picture of how the prison population has changed, admissions to prison, point-in-time prison population counts, and releases from prison are included in this report series. All three types of data are important to consider when examining changes in the prison population. For example, an increase in the number of releases in one year may be associated with a similar increase in the number of admissions several years prior. Or an increase in the overall prison population may be related to an increase in admissions and a simultaneous decrease in releases. While there are many other factors that likely contribute to these changes, examining multiple facets of the prison population is a valuable method for tracking and anticipating changes in the number and types of inmates that the Wisconsin Department of Corrections (WI DOC) is and will be responsible for. Tracking various aspects of the prison population allows the WI DOC to make appropriate adjustments to its facilities and policies as needed.

The data presented in this report have been rigorously validated to ensure accuracy. This data can also be found in the [DAI Point-in-Time Interactive Dashboard](#) on the Data and Research, Interactive Dashboards page of the WI DOC public website.

Prison Facilities

There are 37 correctional institutions and centers throughout the state of Wisconsin. The Division of Adult Institutions (DAI) oversees 19 adult correctional facilities and is responsible for the administration of the Wisconsin Correctional Center System (WCCS), which encompasses 17 Correctional Centers. Additionally, this report includes data regarding inmates at the Wisconsin Resource Center (WRC), which is administered by the Wisconsin Department of Health Services (DHS) in partnership with WI DOC. WRC is a specialized inpatient mental health facility established as a prison under Wisconsin Statute [s. 46.056](#).

WI DOC uses three security levels for its institutions: maximum, medium, and minimum. Facilities at these three security levels vary by design and features, including physical plant design, level of staffing, and operating procedures. A maximum security facility has the most restrictive level of confinement, while a minimum security facility has the least restrictive, and all security levels offer a wide variety of treatment, education, and work programs. Relatedly, there are four different custody levels assigned to individual inmates: maximum, medium, minimum, and minimum community. Inmate custody levels are determined by a classification system that evaluates inmates by established criteria. An inmate's custody level may be different than the security level of the facility in which they are housed. However, except for inmates awaiting transfers and in situations where there is a declared emergency or disturbance at an institution, an inmate's custody classification shall be no greater than the designated security classification of the institution in which the inmate is placed.

Maximum Security facilities have the highest level of security. These facilities may have features that include, but are not limited to, fortified walls, double restrictive fencing, lethal stun fencing, towers, and perimeter vehicle patrols. Housing mostly consists of multiple and single occupant cells. It has the highest staff-to-inmate ratio, and inmate movement is closely supervised. Cell opening and closing is controlled by security staff. These facilities can house inmates of all security levels.

Medium Security facilities have perimeter fencing, motor vehicle patrol, and possibly towers. Housing mostly consists of multiple occupant cells along with secure barracks units, and each housing unit is locked at night. Most inmates are able to open and close their own cells, while some are controlled by staff. Security staff provide direct supervision over the inmates and sleeping areas. Movement of inmates is less restrictive than in a maximum security prison.

Minimum Security facilities have the least restrictive level of security. Currently, three facilities have single perimeter fencing, while the rest do not have fencing. They do not have towers and most do not have motor vehicle patrols. Housing consists of single, double, and multiple occupant cells along with secure barracks units. Minimum custody inmates at minimum security prisons often have job placements with civilian employers (minimum community custody) or participate in community-based work assignments. There is more freedom of inmate movement within these prisons and inmates may have more privileges and responsibilities than they would at a medium or maximum security facility.

Prison and Correctional Center Characteristics

| Adult Institutions | Year Opened | Security Level | Operating Capacity | 12/31/2018 Inmate Population |
|---|--------------------|-----------------------|---------------------------|-------------------------------------|
| Chippewa Valley Correctional Treatment Facility | 2004 | Minimum | 466 | 479 |
| Columbia Correctional Institution | 1986 | Maximum | 830 | 775 |
| Dodge Correctional Institution | 1978 | Maximum | 1,573 | 1,553 |
| Fox Lake Correctional Institution | 1962 | Medium | 1,344 | 1,360 |
| Green Bay Correctional Institution | 1898 | Maximum | 1,091 | 1,092 |
| Jackson Correctional Institution | 1996 | Medium | 995 | 993 |
| Kettle Moraine Correctional Institution | 1962 | Medium | 1,172 | 1,186 |
| Milwaukee Secure Detention Facility | 2001 | Medium | 246 | 800 |
| New Lisbon Correctional Institution | 2004 | Medium | 1,015 | 1,051 |
| Oakhill Correctional Institution | 1976 | Minimum | 735 | 753 |
| Oshkosh Correctional Institution | 1986 | Medium | 2,025 | 2,024 |
| Prairie du Chien Correctional Institution | 1997 | Medium | 512 | 512 |
| Racine Correctional Institution | 1991 | Medium | 1,692 | 1,685 |
| Racine Youthful Offender Correctional Facility | 1998 | Medium | 450 | 460 |
| Redgranite Correctional Institution | 2001 | Medium | 1,018 | 1,025 |
| Stanley Correctional Institution | 2003 | Medium | 1,550 | 1,581 |
| Sturtevant Transitional Facility | 2003 | Minimum | 152 | 151 |
| Waupun Correctional Institution | 1851 | Maximum | 1,240 | 1,256 |
| Wisconsin Secure Program Facility | 1999 | Maximum | 491 | 482 |
| Wisconsin Resource Center ¹ | 1983 | Maximum | 344 | 460 |

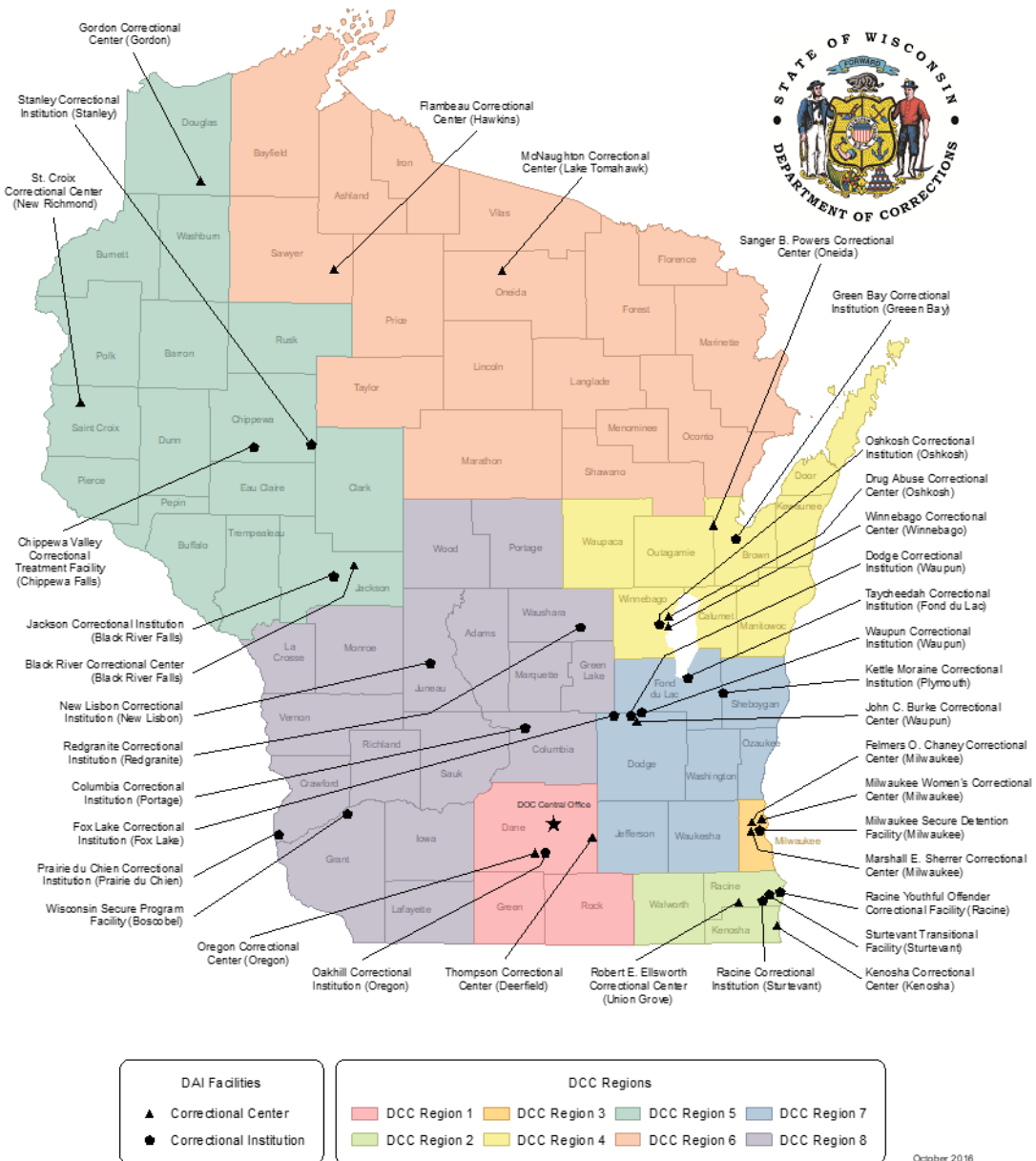
| Wisconsin Correctional Center System | Year Opened | Security Level | Operating Capacity | 12/31/2018 Inmate Population |
|---|--------------------|-----------------------|---------------------------|-------------------------------------|
| Black River Correctional Center | 1962 | Minimum | 138 | 137 |
| Drug Abuse Correctional Center | 1977 | Minimum | 294 | 279 |
| Felmers O. Chaney Correctional Center | 2000 | Minimum | 100 | 108 |
| Flambeau Correctional Center | 1954 | Minimum | 90 | 98 |
| Gordon Correctional Center | 1950 | Minimum | 89 | 96 |
| John C. Burke Correctional Center | 1990 | Minimum | 250 | 274 |
| Kenosha Correctional Center | 1990 | Minimum | 115 | 115 |
| Marshall E. Sherrer Correctional Center | 1981 | Minimum | 60 | 59 |
| McNaughton Correctional Center | 1956 | Minimum | 102 | 111 |

¹ Wisconsin Resource Center is administered by the Wisconsin Department of Health Services.

| | | | | |
|--------------------------------------|------|---------|-----|-----|
| Oregon Correctional Center | 1992 | Minimum | 112 | 122 |
| Sanger B. Powers Correctional Center | 1982 | Minimum | 120 | 122 |
| St. Croix Correctional Center | 1991 | Minimum | 120 | 108 |
| Thompson Correctional Center | 1993 | Minimum | 125 | 145 |
| Winnebago Correctional Center | 1974 | Minimum | 266 | 279 |

| Wisconsin Women's Correctional System | Year Opened | Security Level | Operating Capacity | 12/31/2018 Inmate Population |
|---|-------------|----------------|--------------------|------------------------------|
| Milwaukee Women's Correctional Center | 2003 | Minimum | 100 | 96 |
| Robert E. Ellsworth Correctional Center | 1989 | Minimum | 516 | 475 |
| Taycheedah Correctional Institution | 1921 | Maximum | 930 | 941 |

Division of Adult Institutions Correctional Facilities



October 2016

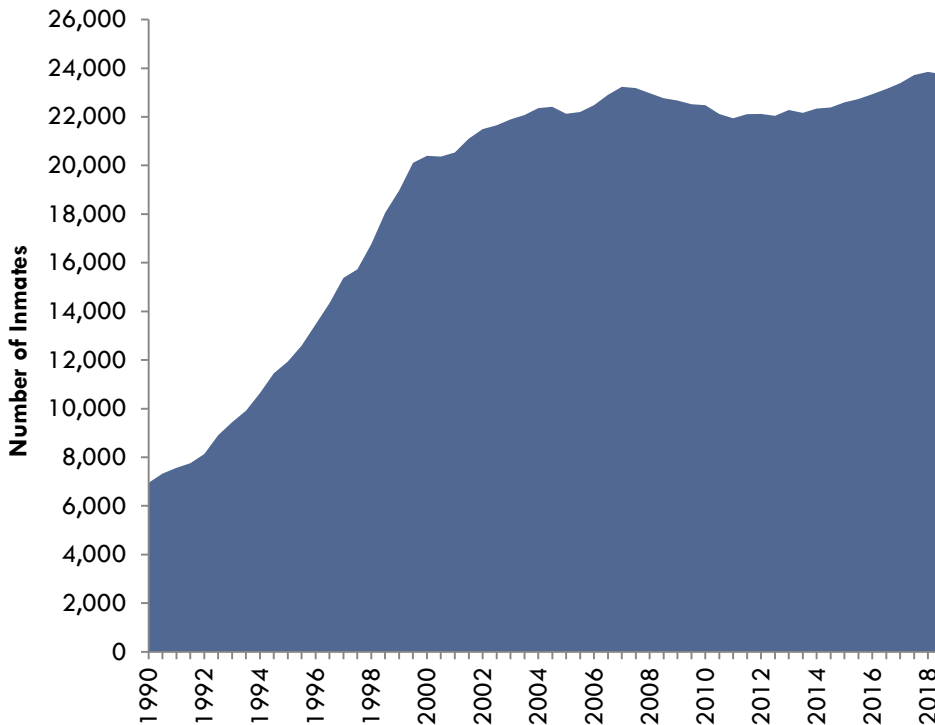
WISCONSIN PRISON POPULATIONS

Information presented in this report represents point-in-time prison populations over the last 19 years. Point-in-time “snapshots” of the prison population have been taken twice each year from 1990 to 2018 (on June 30th and December 31st); the majority of this report focuses on the snapshots taken between 2000 and 2018. This report does not include offenders under the supervision of the Division of Community Corrections who are held in a Division of Adult Institutions facility as a temporary hold. See the [Prison Admissions: 2000-2018 report](#), Appendix C, in the WI DOC Data Trend series for information on temporary holds in WI DOC facilities.



2018 End-of-Year Snapshot

- 38 was the average age
- 93.4% were male
- 42.1% were Black and 52.6% were White
- 7.9% reported Hispanic or Latino ethnicity
- 44.8% of men and 47.2% of women reported having dependent children
- 6.0% reported having military experience
- 38.3% of men and 84.8% of women had a mental health condition
- 67.7% had a violent crime as their most serious offense
- 28.2% had five or more years left to serve in prison



Note: Point-in-time numbers exclude temporary holds.

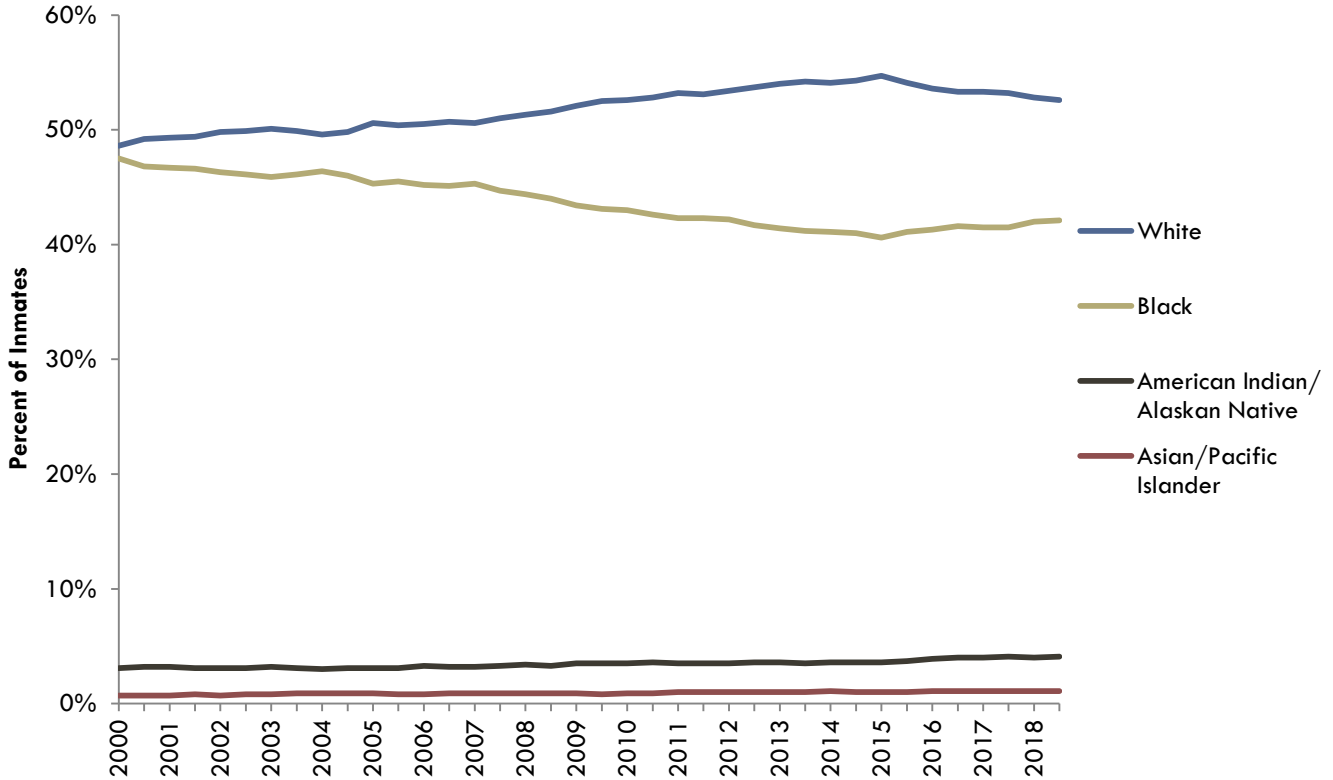
Point-in-Time Prison Populations (June 1990 - December 2018): The graph above displays point-in-time “snapshots” of the prison population from June 1990 to December 2018. The table below documents changes in end-of-year snapshots by gender between 2000 and 2018. The remainder of this report focuses on the population since 2000.

| | 2000 | % Change 2000-2009 | 2009 | % Change 2009-2018 | 2018 |
|-------------------------|--------|-----------------------|--------|-----------------------|--------|
| Male | 19,023 | +11.7% | 21,250 | +4.4% | 22,187 |
| Female | 1,343 | -5.4% | 1,271 | +23.4% | 1,568 |
| Total Population | 20,366 | +10.6% | 22,521 | +5.5% | 23,755 |

See Appendix B, [Table 1](#), for a complete table of point-in-time numbers, and [Table 2](#) for a complete table of point-in-time numbers by gender.

Populations by Race

Since 2000, White inmates have made up the largest proportion of the prison population at every point-in-time. Between December of 2000 and 2015, the proportion of White inmates increased by 10.0%, while the proportion of Black inmates decreased by 12.2%. Since then, the trends for both groups have switched, with the proportion of White inmates decreasing by 2.8% and the proportion of Black inmates increasing by 2.4%.



Note: Point-in-time numbers exclude temporary holds.

Point-in-Time Population by Gender, Race, and Ethnicity in December 2000 and 2018

| | Male | | Female | |
|------------------------------------|-------|-------|--------|-------|
| | 2000 | 2018 | 2000 | 2018 |
| Race | | | | |
| White | 49.2% | 51.5% | 48.9% | 68.4% |
| Black | 46.8% | 43.4% | 46.9% | 23.2% |
| American Indian/ Alaskan Native | 3.2% | 3.9% | 3.6% | 7.6% |
| Asian/Pacific Islander | 0.8% | 1.2% | 0.4% | 0.8% |
| Did Not Report | 0.1% | 0.1% | 0.1% | 0.1% |
| Ethnicity* | | | | |
| Hispanic or Latino | 7.9% | 8.2% | 5.4% | 3.2% |

* Inmates in all race categories can identify themselves as Hispanic or Latino.

Among men, the proportion of White and Hispanic inmates has **increased**, while the proportion of Black inmates has **decreased**.

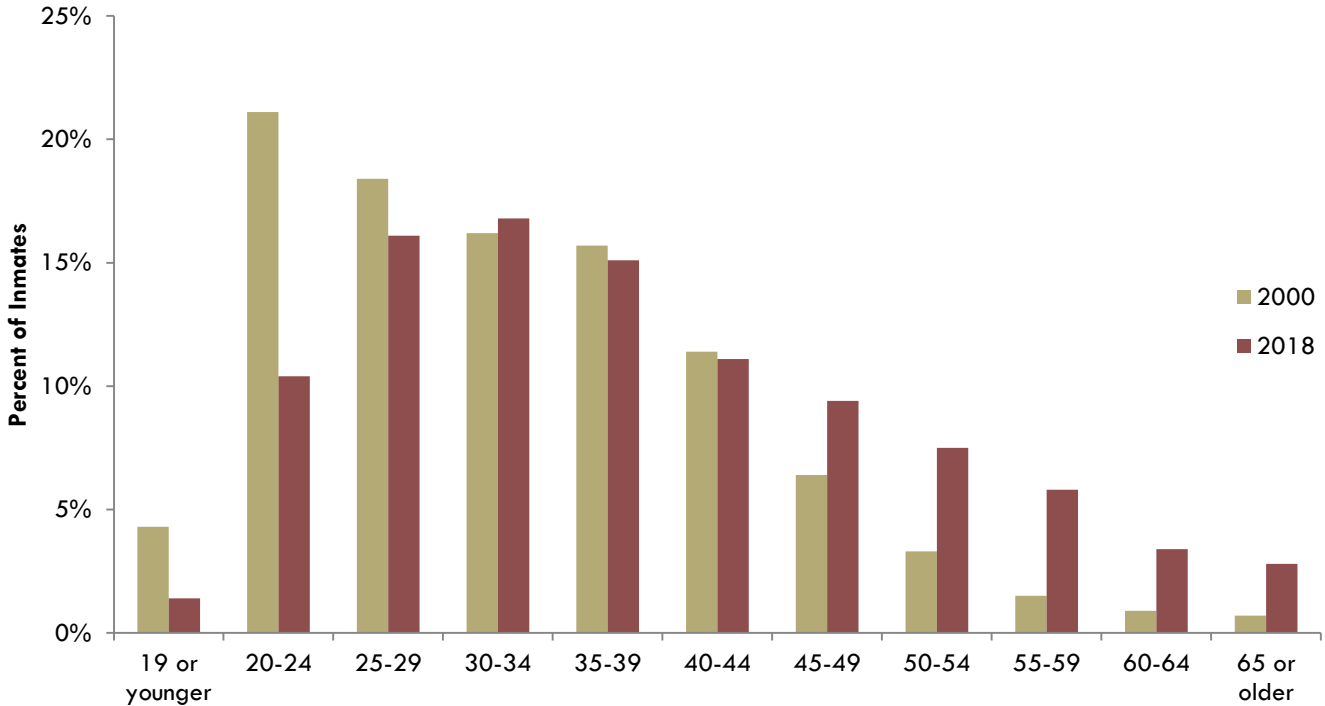
Among women, the proportion of White and American Indian/Alaskan Native inmates has **sharply increased**, while the proportion of Black and Hispanic inmates has **sharply decreased**.

See Appendix B, [Table 3](#), for a complete table of point-in-time numbers by race, and [Table 4](#) for a complete table of point-in-time numbers by ethnicity.

Populations by Age

From December of 2000 to 2018, the proportion of all inmates in WI DOC prisons aged 45 or older increased by 125.8% (from 12.8% to 28.9%). During that same time, the proportion of inmates aged 24 or younger decreased by 53.5% (from 25.4% to 11.8%).

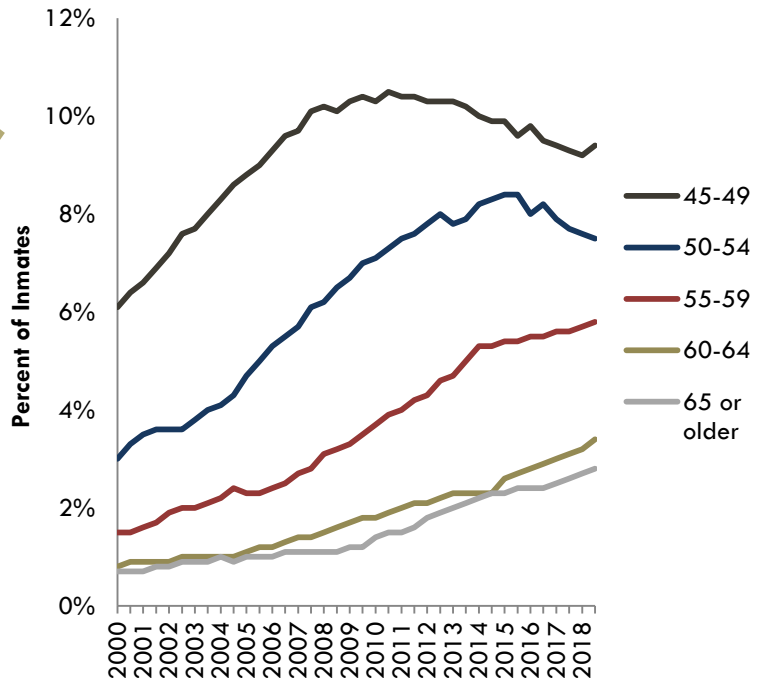
See Appendix B, [Table 5](#), for a complete table of point-in-time numbers by age.



Note: Point-in-time numbers exclude temporary holds.



Point-in-Time Populations by Age (45 or older)

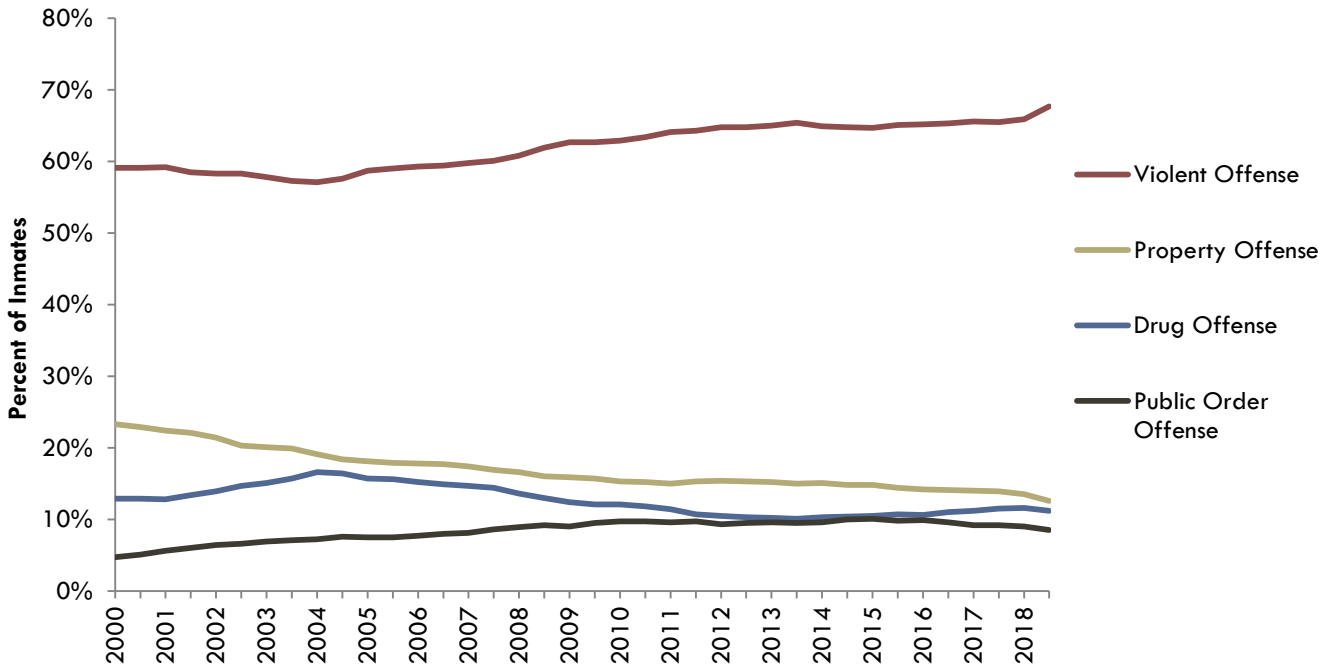


Note: Point-in-time numbers exclude temporary holds.

Populations by Most Serious Offense

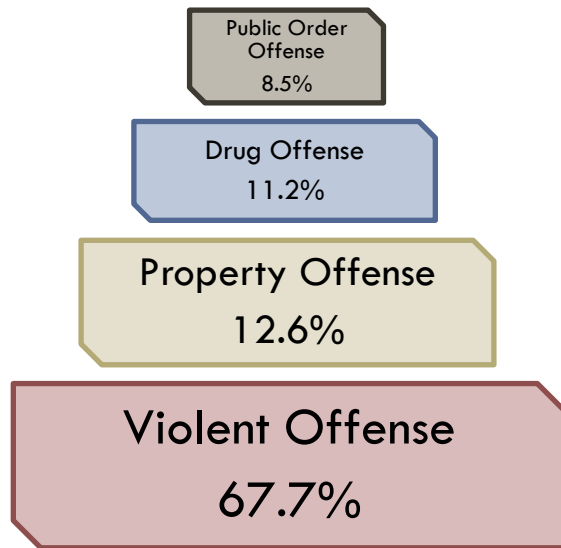
Offenses committed by WI DOC inmates were separated into four offense categories: violent offenses, property offenses, drug offenses, and public order offenses. Offense categories were based on the Association of State Correctional Administrators' (ASCA) Performance-Based Measures System standards. Many offenders were convicted of multiple offenses; for this reason, an offender's most serious offense was selected for this analysis.

See Appendix B, [Table 6](#), for a complete table of point-in-time numbers by most serious offense.



Note: Point-in-time numbers exclude temporary holds and inmates without offense data.

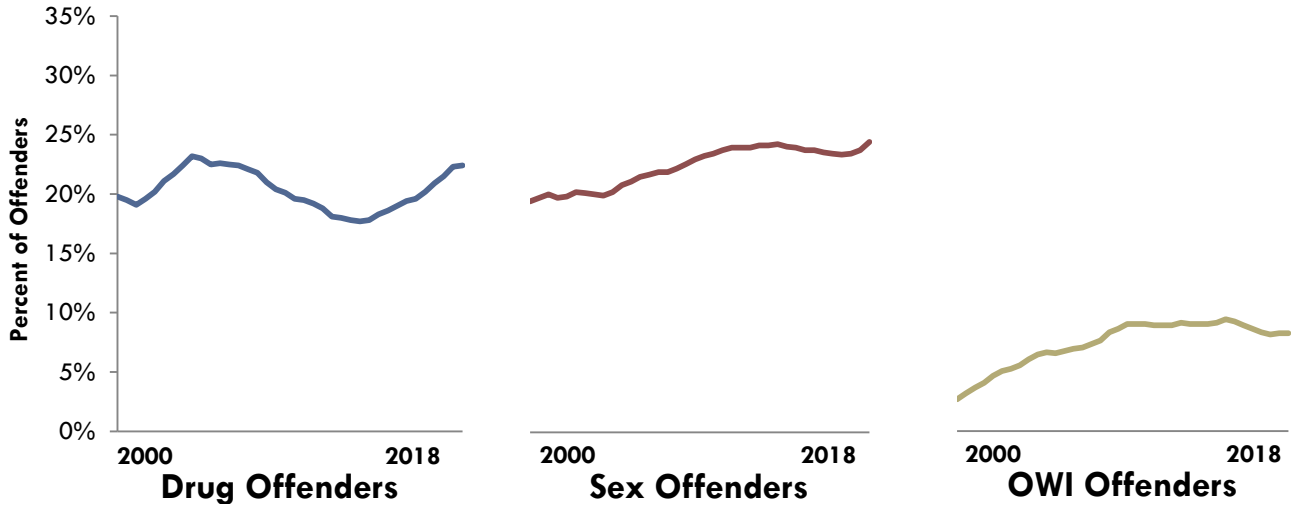
Point-in-Time Population by Most Serious Offense (December 2018)



Populations with Any Drug, Sex, or Operating While Intoxicated Offense

In the graphs below, inmates were included in one or more of the three offense categories if any of their active offenses at the point-in-time snapshot were a drug, sex, or operating while intoxicated (OWI) offense. For example, an inmate was counted in each of the three categories if they had an active drug offense, sex offense, and OWI offense at the point-in-time snapshot. The category that an inmate was included in does not necessarily indicate the inmate's most serious offense.

See Appendix B, [Table Z](#), for a complete table of point-in-time numbers by drug, sex, or OWI Offense.



Note: Point-in-time numbers exclude temporary holds and offenders without offense data.



Drug Offenders

- The percentage of inmates in prison with a drug offense peaked at 23.0% in 2004, decreased to 17.8% in 2013, and then increased to 22.4% in 2018.



Sex Offenders

- The percentage of inmates in prison with a sex offense has increased from 20.1% in 2000 to 24.9% in 2018.



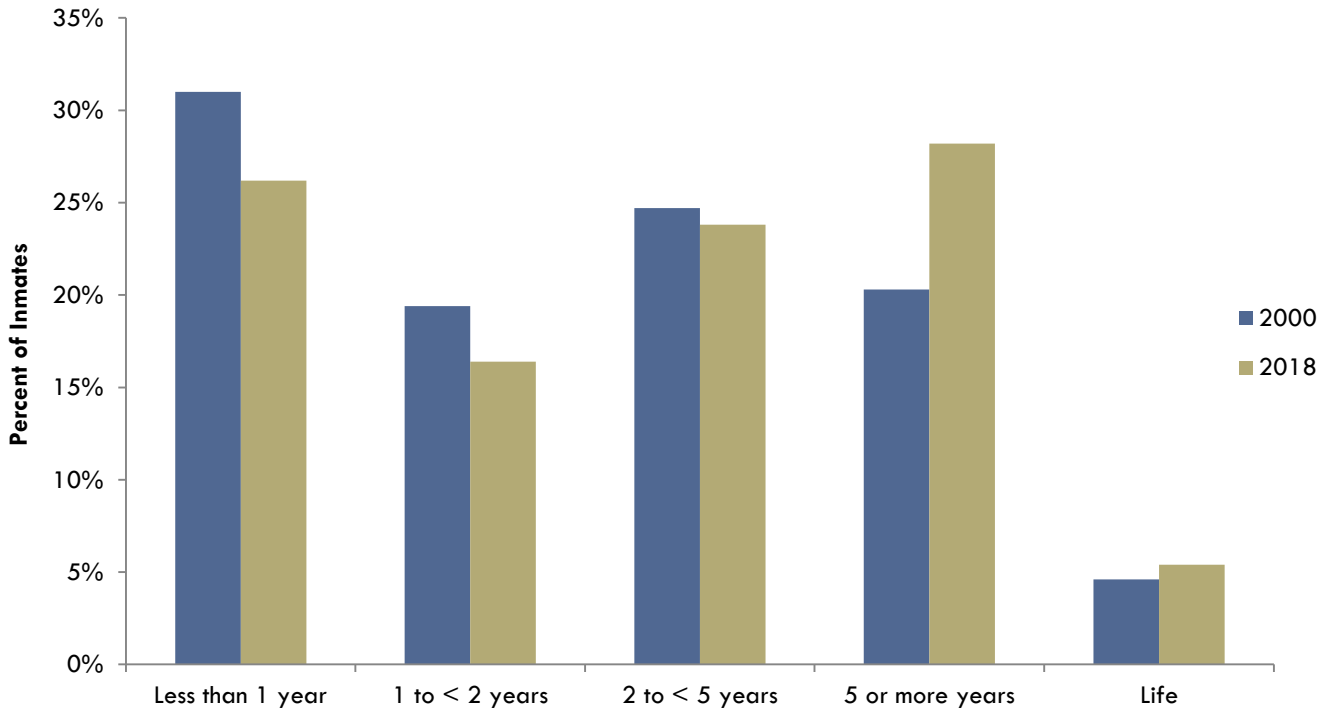
OWI Offenders

- The percentage of inmates with an OWI offense increased substantially from 3.2% in 2000 to 8.3% in 2018, with a peak of 9.3% in 2015.

Populations by Estimated Time Left to Serve

Time left to serve was calculated as the time between the specific point-in-time date and the actual or projected end date of an inmate’s incarceration portion of their sentence. While time left to serve does not represent the overall sentence an inmate *must* serve in prison, it offers one possible explanation for changes in the prison population over time - such as why the inmate population has gotten older.

See Appendix B, [Table 8](#), for a complete table of point-in-time numbers by estimated time left to serve.

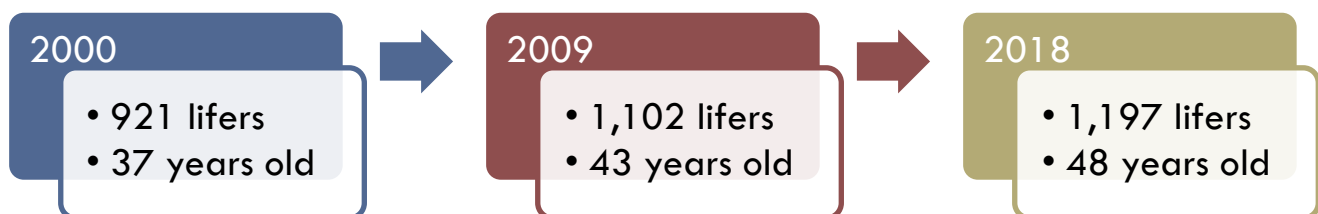


Note: Point-in-time numbers exclude temporary holds and inmates without offense data.

- From 2000 to 2018, the proportion of inmates with **less than five** years left to serve **decreased by 11.6%**.
- During that same time, the proportion of inmates with **five or more** years left to serve, excluding life sentences, **increased by 38.9%**.

Inmates Serving Life Sentences: December 2000, 2009, and 2018

Since December of 2000, the number of inmates in WI DOC prisons serving life sentences has increased by 30.0%. The proportion of those serving a life sentence has increased from 4.6% to 5.4% of all WI DOC inmates. The average age of lifers has increased by 11 years since 2000.



Appendix A: Methodology

Point-in-Time Prison Populations

The point-in-time prison population data presented in this report include inmates who were physically present in a WI DOC prison. It also includes inmates occupying contract beds in county jails, mental health facilities, and prisons in other states, as well as inmates who were not physically in a WI DOC facility on that point-in-time date but who had a bed held for them while they were out to court or at the hospital. Additionally, it includes interstate compact inmates serving other states' sentences or federal sentences in WI DOC facilities. These population counts do NOT include interstate compact inmates who were serving WI sentences, but were physically incarcerated in other states' prisons or federal facilities. Furthermore, inmates with adult convictions who were being housed in a juvenile facility were excluded from this report.

Point-in-Time Prison Populations by Most Serious Offense

Offense categories were based on the Association of State Correctional Administrators' (ASCA) Performance-Based Measures System standards. While the ASCA standards were followed as closely as possible in the categorization of offenses, supplementary rules were developed to aid in categorizing statutes that did not clearly fit into one category or another. Offense categorization methodology is available upon request.

Offenses committed by WI DOC inmates were separated into four offense categories: violent offenses, property offenses, drug offenses, and public order offenses. Offenses included in this report represented an inmate's most serious offense. The most serious offense was selected based on the order of the categories listed above, with violent offenses as the most serious and public order offenses as the least serious.

Over the years, statutes have been passed that have contributed to the changing composition of the WI DOC prison population. For example, in 2009, Wisconsin Act 100 made an operating while intoxicated (OWI) offense a misdemeanor if it occurred with a minor child (under the age of 16) in the vehicle; it also required the installation of an ignition interlock device for all repeat offenders and for first-time offenders with a blood-alcohol level of more than 0.15. Then in 2015, Wisconsin Act 371 was signed into law, increasing the penalty for a fourth OWI conviction to a felony in all circumstances. OWI offenses fall under the Public Order Offense category, and the statute changes described above likely contributed to some of the changes in point-in-time prison population counts over the years.

For the most serious offense analysis, inmates were not counted if they did not have an active offense. Occasionally, an inmate appeared to not have any active offenses at a particular point-in-time date due to data entry lag, and/or due to the logic used to accurately align offenses with specific points in time. Although the offense exists in the WI DOC data system, those offenses were not included here.

Finally, the most serious offense analysis excluded inmates in prison at any of the points in time for Alternatives to Revocation (ATR), erroneous admissions, pending revocation hearings, and for interstate compact offenders (with no Wisconsin sentences); these inmates were not serving time in prison for the confinement portion of Wisconsin sentences.

Point-in-Time Prison Populations with Any Drug, Sex, or OWI Offense

An inmate was included in one or more of these three offense categories if any of their active offenses at the time of admission were a drug, sex, or OWI offense. This means that an inmate could have been counted in each of the three categories if they had an active drug offense, sex offense, and OWI offense on the point-in-time date. The category that an inmate was included in does not necessarily indicate the inmate's most serious offense. Inmates' admissions were not counted if they did not have an active offense.

Point-in-Time Prison Populations by Estimated Time Left to Serve

For the time left to serve analysis, time left to serve was calculated as the time between each point-in-time date and the actual or projected end date of an inmate's incarceration portion of their sentence. Inmates were excluded if they did not have an actual or projected end date for their period of incarceration or if they did not have an active offense. The end date was calculated based on the following logic: if at the time that data was produced for this report (12/31/2018) the inmate had been released, the release date was used as the end date. If the inmate had not been released, the mandatory release or extended supervision release date (which is the date the inmate should be released from prison to begin the supervision portion of their sentence) was used. If a valid mandatory release/extended supervision release date was not recorded, the inmate's maximum discharge date was used to determine their projected release from prison. Due to timing of data entry, some inmates did not have a valid mandatory release/extended supervision date or maximum discharge date associated with a particular point-in-time date. This does not mean that they did not have one of those dates recorded in the data system; rather, the appropriate date that should have been associated with that point-in-time date could not be identified. If a valid mandatory release/extended supervision date and maximum discharge date could not be identified, and no release date existed, the inmate was removed from that point-in-time for the time left to serve analyses. Additionally, the time left to serve analysis excluded inmates in prison at any of the points in time for ATRs, erroneous admissions, pending revocation hearings, and interstate compact offenders without Wisconsin sentences (as they were not serving time in prison for the confinement portion of Wisconsin sentences).

Appendix B: Tables

Table 1. Total Point-in-Time Prison Populations

| Point-in-Time | Total Population | Point-in-Time | Total Population |
|---------------|------------------|---------------|------------------|
| 06/30/1990 | 6,949 | 12/31/2004 | 22,415 |
| 12/31/1990 | 7,328 | 06/30/2005 | 22,128 |
| 06/30/1991 | 7,565 | 12/31/2005 | 22,199 |
| 12/31/1991 | 7,755 | 06/30/2006 | 22,480 |
| 06/30/1992 | 8,133 | 12/31/2006 | 22,904 |
| 12/31/1992 | 8,907 | 06/30/2007 | 23,236 |
| 06/30/1993 | 9,441 | 12/31/2007 | 23,184 |
| 12/31/1993 | 9,916 | 06/30/2008 | 22,974 |
| 06/30/1994 | 10,639 | 12/31/2008 | 22,768 |
| 12/31/1994 | 11,456 | 06/30/2009 | 22,672 |
| 06/30/1995 | 11,935 | 12/31/2009 | 22,521 |
| 12/31/1995 | 12,597 | 06/30/2010 | 22,480 |
| 06/30/1996 | 13,464 | 12/31/2010 | 22,117 |
| 12/31/1996 | 14,340 | 06/30/2011 | 21,941 |
| 06/30/1997 | 15,378 | 12/31/2011 | 22,112 |
| 12/31/1997 | 15,729 | 06/30/2012 | 22,120 |
| 06/30/1998 | 16,765 | 12/31/2012 | 22,043 |
| 12/31/1998 | 18,059 | 06/30/2013 | 22,282 |
| 06/30/1999 | 18,970 | 12/31/2013 | 22,164 |
| 12/31/1999 | 20,111 | 06/30/2014 | 22,341 |
| 06/30/2000 | 20,398 | 12/31/2014 | 22,385 |
| 12/31/2000 | 20,366 | 06/30/2015 | 22,597 |
| 06/30/2001 | 20,535 | 12/31/2015 | 22,734 |
| 12/31/2001 | 21,101 | 06/30/2016 | 22,933 |
| 06/30/2002 | 21,496 | 12/31/2016 | 23,145 |
| 12/31/2002 | 21,652 | 06/30/2017 | 23,386 |
| 06/30/2003 | 21,894 | 12/31/2017 | 23,718 |
| 12/31/2003 | 22,073 | 06/30/2018 | 23,851 |
| 06/30/2004 | 22,360 | 12/31/2018 | 23,755 |

Note: Point-in-time numbers exclude temporary holds.

Table 2. Point-in-Time Prison Populations by Gender

| Point-in-Time | Total | Male | | Female | |
|---------------|--------|--------|-------|--------|------|
| | N | N | % | N | % |
| 06/30/2000 | 20,398 | 18,977 | 93.0% | 1,421 | 7.0% |
| 12/31/2000 | 20,366 | 19,023 | 93.4% | 1,343 | 6.6% |
| 06/30/2001 | 20,535 | 19,266 | 93.8% | 1,269 | 6.2% |
| 12/31/2001 | 21,101 | 19,820 | 93.9% | 1,281 | 6.1% |
| 06/30/2002 | 21,496 | 20,177 | 93.9% | 1,319 | 6.1% |
| 12/31/2002 | 21,652 | 20,320 | 93.8% | 1,332 | 6.2% |
| 06/30/2003 | 21,894 | 20,549 | 93.9% | 1,345 | 6.1% |
| 12/31/2003 | 22,073 | 20,726 | 93.9% | 1,347 | 6.1% |
| 06/30/2004 | 22,360 | 21,012 | 94.0% | 1,348 | 6.0% |
| 12/31/2004 | 22,415 | 21,076 | 94.0% | 1,339 | 6.0% |
| 06/30/2005 | 22,128 | 20,861 | 94.3% | 1,267 | 5.7% |
| 12/31/2005 | 22,199 | 20,886 | 94.1% | 1,313 | 5.9% |
| 06/30/2006 | 22,480 | 21,147 | 94.1% | 1,333 | 5.9% |
| 12/31/2006 | 22,904 | 21,521 | 94.0% | 1,383 | 6.0% |
| 06/30/2007 | 23,236 | 21,802 | 93.8% | 1,434 | 6.2% |
| 12/31/2007 | 23,184 | 21,701 | 93.6% | 1,483 | 6.4% |
| 06/30/2008 | 22,974 | 21,578 | 93.9% | 1,396 | 6.1% |
| 12/31/2008 | 22,768 | 21,458 | 94.2% | 1,310 | 5.8% |
| 06/30/2009 | 22,672 | 21,340 | 94.1% | 1,332 | 5.9% |
| 12/31/2009 | 22,521 | 21,250 | 94.4% | 1,271 | 5.6% |
| 06/30/2010 | 22,480 | 21,226 | 94.4% | 1,254 | 5.6% |
| 12/31/2010 | 22,117 | 20,880 | 94.4% | 1,237 | 5.6% |
| 06/30/2011 | 21,941 | 20,755 | 94.6% | 1,186 | 5.4% |
| 12/31/2011 | 22,112 | 20,956 | 94.8% | 1,156 | 5.2% |
| 06/30/2012 | 22,120 | 20,906 | 94.5% | 1,214 | 5.5% |
| 12/31/2012 | 22,043 | 20,844 | 94.6% | 1,199 | 5.4% |
| 06/30/2013 | 22,282 | 21,046 | 94.5% | 1,236 | 5.5% |
| 12/31/2013 | 22,164 | 20,945 | 94.5% | 1,219 | 5.5% |
| 06/30/2014 | 22,341 | 21,060 | 94.3% | 1,281 | 5.7% |
| 12/31/2014 | 22,385 | 21,033 | 94.0% | 1,352 | 6.0% |
| 06/30/2015 | 22,597 | 21,158 | 93.6% | 1,439 | 6.4% |
| 12/31/2015 | 22,734 | 21,353 | 93.9% | 1,381 | 6.1% |
| 06/30/2016 | 22,933 | 21,496 | 93.7% | 1,437 | 6.3% |
| 12/31/2016 | 23,145 | 21,685 | 93.7% | 1,460 | 6.3% |
| 06/30/2017 | 23,386 | 21,845 | 93.4% | 1,541 | 6.6% |
| 12/31/2017 | 23,718 | 22,124 | 93.3% | 1,594 | 6.7% |
| 06/30/2018 | 23,851 | 22,248 | 93.3% | 1,603 | 6.7% |
| 12/31/2018 | 23,755 | 22,187 | 93.4% | 1,568 | 6.6% |

Note: Point-in-time numbers exclude temporary holds.

Table 3. Point-in-Time Prison Populations by Race

| Point-in-Time | Black | | White | | American Indian/ Alaskan Native | | Asian/ Pacific Islander | | Did Not Report | |
|---------------|--------|-------|--------|-------|------------------------------------|------|----------------------------|------|----------------|------|
| | N | % | N | % | N | % | N | % | N | % |
| 06/30/2000 | 9,688 | 47.5% | 9,917 | 48.6% | 629 | 3.1% | 147 | 0.7% | 17 | 0.1% |
| 12/31/2000 | 9,529 | 46.8% | 10,016 | 49.2% | 656 | 3.2% | 150 | 0.7% | 15 | 0.1% |
| 06/30/2001 | 9,594 | 46.7% | 10,119 | 49.3% | 660 | 3.2% | 151 | 0.7% | 11 | 0.1% |
| 12/31/2001 | 9,839 | 46.6% | 10,429 | 49.4% | 659 | 3.1% | 163 | 0.8% | 11 | 0.1% |
| 06/30/2002 | 9,959 | 46.3% | 10,711 | 49.8% | 661 | 3.1% | 158 | 0.7% | 7 | 0.0% |
| 12/31/2002 | 9,990 | 46.1% | 10,799 | 49.9% | 681 | 3.1% | 175 | 0.8% | 7 | 0.0% |
| 06/30/2003 | 10,044 | 45.9% | 10,965 | 50.1% | 694 | 3.2% | 185 | 0.8% | 6 | 0.0% |
| 12/31/2003 | 10,178 | 46.1% | 11,004 | 49.9% | 683 | 3.1% | 191 | 0.9% | 17 | 0.1% |
| 06/30/2004 | 10,386 | 46.4% | 11,084 | 49.6% | 678 | 3.0% | 191 | 0.9% | 21 | 0.1% |
| 12/31/2004 | 10,322 | 46.0% | 11,169 | 49.8% | 699 | 3.1% | 201 | 0.9% | 24 | 0.1% |
| 06/30/2005 | 10,022 | 45.3% | 11,195 | 50.6% | 695 | 3.1% | 190 | 0.9% | 26 | 0.1% |
| 12/31/2005 | 10,102 | 45.5% | 11,197 | 50.4% | 684 | 3.1% | 188 | 0.8% | 28 | 0.1% |
| 06/30/2006 | 10,164 | 45.2% | 11,362 | 50.5% | 734 | 3.3% | 191 | 0.8% | 29 | 0.1% |
| 12/31/2006 | 10,328 | 45.1% | 11,601 | 50.7% | 744 | 3.2% | 201 | 0.9% | 30 | 0.1% |
| 06/30/2007 | 10,522 | 45.3% | 11,753 | 50.6% | 732 | 3.2% | 202 | 0.9% | 27 | 0.1% |
| 12/31/2007 | 10,362 | 44.7% | 11,823 | 51.0% | 769 | 3.3% | 207 | 0.9% | 23 | 0.1% |
| 06/30/2008 | 10,201 | 44.4% | 11,775 | 51.3% | 776 | 3.4% | 200 | 0.9% | 22 | 0.1% |
| 12/31/2008 | 10,016 | 44.0% | 11,739 | 51.6% | 758 | 3.3% | 208 | 0.9% | 47 | 0.2% |
| 06/30/2009 | 9,840 | 43.4% | 11,802 | 52.1% | 794 | 3.5% | 202 | 0.9% | 34 | 0.1% |
| 12/31/2009 | 9,697 | 43.1% | 11,828 | 52.5% | 781 | 3.5% | 191 | 0.8% | 24 | 0.1% |
| 06/30/2010 | 9,657 | 43.0% | 11,834 | 52.6% | 780 | 3.5% | 193 | 0.9% | 16 | 0.1% |
| 12/31/2010 | 9,424 | 42.6% | 11,681 | 52.8% | 801 | 3.6% | 198 | 0.9% | 13 | 0.1% |
| 06/30/2011 | 9,276 | 42.3% | 11,673 | 53.2% | 770 | 3.5% | 209 | 1.0% | 13 | 0.1% |
| 12/31/2011 | 9,356 | 42.3% | 11,750 | 53.1% | 776 | 3.5% | 218 | 1.0% | 12 | 0.1% |
| 06/30/2012 | 9,325 | 42.2% | 11,802 | 53.4% | 764 | 3.5% | 217 | 1.0% | 12 | 0.1% |
| 12/31/2012 | 9,184 | 41.7% | 11,840 | 53.7% | 789 | 3.6% | 218 | 1.0% | 12 | 0.1% |
| 06/30/2013 | 9,217 | 41.4% | 12,030 | 54.0% | 800 | 3.6% | 223 | 1.0% | 12 | 0.1% |
| 12/31/2013 | 9,142 | 41.2% | 12,003 | 54.2% | 782 | 3.5% | 220 | 1.0% | 17 | 0.1% |
| 06/30/2014 | 9,185 | 41.1% | 12,097 | 54.1% | 801 | 3.6% | 241 | 1.1% | 17 | 0.1% |
| 12/31/2014 | 9,174 | 41.0% | 12,163 | 54.3% | 797 | 3.6% | 234 | 1.0% | 17 | 0.1% |
| 06/30/2015 | 9,174 | 40.6% | 12,361 | 54.7% | 811 | 3.6% | 234 | 1.0% | 17 | 0.1% |
| 12/31/2015 | 9,338 | 41.1% | 12,300 | 54.1% | 846 | 3.7% | 233 | 1.0% | 17 | 0.1% |
| 06/30/2016 | 9,481 | 41.3% | 12,300 | 53.6% | 889 | 3.9% | 246 | 1.1% | 17 | 0.1% |
| 12/31/2016 | 9,621 | 41.6% | 12,343 | 53.3% | 915 | 4.0% | 252 | 1.1% | 14 | 0.1% |
| 06/30/2017 | 9,702 | 41.5% | 12,472 | 53.3% | 930 | 4.0% | 268 | 1.1% | 14 | 0.1% |
| 12/31/2017 | 9,853 | 41.5% | 12,610 | 53.2% | 972 | 4.1% | 267 | 1.1% | 16 | 0.1% |
| 06/30/2018 | 10,014 | 42.0% | 12,596 | 52.8% | 949 | 4.0% | 274 | 1.1% | 18 | 0.1% |
| 12/31/2018 | 9,993 | 42.1% | 12,496 | 52.6% | 974 | 4.1% | 272 | 1.1% | 20 | 0.1% |

Note: Point-in-time numbers exclude temporary holds.

Table 4. Point-in-Time Prison Populations by Ethnicity

| Point-in-Time | Hispanic or Latino | | Not Hispanic or Latino | | Did Not Report | |
|---------------|--------------------|------|------------------------|-------|----------------|-------|
| | N | % | N | % | N | % |
| 06/30/2000 | 1,506 | 7.4% | 13,646 | 66.9% | 5,246 | 25.7% |
| 12/31/2000 | 1,566 | 7.7% | 13,508 | 66.3% | 5,292 | 26.0% |
| 06/30/2001 | 1,574 | 7.7% | 13,539 | 65.9% | 5,422 | 26.4% |
| 12/31/2001 | 1,671 | 7.9% | 13,839 | 65.6% | 5,591 | 26.5% |
| 06/30/2002 | 1,714 | 8.0% | 13,992 | 65.1% | 5,790 | 26.9% |
| 12/31/2002 | 1,743 | 8.1% | 13,977 | 64.6% | 5,932 | 27.4% |
| 06/30/2003 | 1,774 | 8.1% | 13,991 | 63.9% | 6,129 | 28.0% |
| 12/31/2003 | 1,839 | 8.3% | 13,949 | 63.2% | 6,285 | 28.5% |
| 06/30/2004 | 1,870 | 8.4% | 14,016 | 62.7% | 6,474 | 29.0% |
| 12/31/2004 | 1,886 | 8.4% | 13,911 | 62.1% | 6,618 | 29.5% |
| 06/30/2005 | 1,916 | 8.7% | 13,573 | 61.3% | 6,639 | 30.0% |
| 12/31/2005 | 1,951 | 8.8% | 13,408 | 60.4% | 6,840 | 30.8% |
| 06/30/2006 | 1,984 | 8.8% | 13,403 | 59.6% | 7,093 | 31.6% |
| 12/31/2006 | 2,037 | 8.9% | 13,464 | 58.8% | 7,403 | 32.3% |
| 06/30/2007 | 2,081 | 9.0% | 13,382 | 57.6% | 7,773 | 33.5% |
| 12/31/2007 | 2,094 | 9.0% | 13,212 | 57.0% | 7,878 | 34.0% |
| 06/30/2008 | 2,037 | 8.9% | 12,942 | 56.3% | 7,995 | 34.8% |
| 12/31/2008 | 2,045 | 9.0% | 12,750 | 56.0% | 7,973 | 35.0% |
| 06/30/2009 | 2,032 | 9.0% | 12,511 | 55.2% | 8,129 | 35.9% |
| 12/31/2009 | 1,982 | 8.8% | 12,375 | 54.9% | 8,164 | 36.3% |
| 06/30/2010 | 2,009 | 8.9% | 12,360 | 55.0% | 8,111 | 36.1% |
| 12/31/2010 | 1,985 | 9.0% | 11,282 | 51.0% | 8,850 | 40.0% |
| 06/30/2011 | 1,992 | 9.1% | 10,310 | 47.0% | 9,639 | 43.9% |
| 12/31/2011 | 1,981 | 9.0% | 9,684 | 43.8% | 10,447 | 47.2% |
| 06/30/2012 | 1,969 | 8.9% | 9,142 | 41.3% | 11,009 | 49.8% |
| 12/31/2012 | 1,970 | 8.9% | 8,640 | 39.2% | 11,433 | 51.9% |
| 06/30/2013 | 1,950 | 8.8% | 8,300 | 37.2% | 12,032 | 54.0% |
| 12/31/2013 | 1,966 | 8.9% | 8,087 | 36.5% | 12,111 | 54.6% |
| 06/30/2014 | 1,966 | 8.8% | 8,390 | 37.6% | 11,985 | 53.6% |
| 12/31/2014 | 2,027 | 9.1% | 8,398 | 37.5% | 11,960 | 53.4% |
| 06/30/2015 | 2,032 | 9.0% | 7,929 | 35.1% | 12,636 | 55.9% |
| 12/31/2015 | 2,013 | 8.9% | 7,447 | 32.8% | 13,274 | 58.4% |
| 06/30/2016 | 2,026 | 8.8% | 7,406 | 32.3% | 13,501 | 58.9% |
| 12/31/2016 | 2,012 | 8.7% | 8,211 | 35.5% | 12,922 | 55.8% |
| 06/30/2017 | 1,973 | 8.4% | 8,852 | 37.9% | 12,561 | 53.7% |
| 12/31/2017 | 1,979 | 8.3% | 9,247 | 39.0% | 12,492 | 52.7% |
| 06/30/2018 | 1,881 | 7.9% | 9,558 | 40.1% | 12,412 | 52.0% |
| 12/31/2018 | 1,866 | 7.9% | 9,791 | 41.2% | 12,098 | 50.9% |

Note: Point-in-time numbers exclude temporary holds.

Table 5. Point-in-Time Prison Populations by Age

| Point-in-Time | 19 or younger | | 20-24 | | 25-29 | | 30-34 | | 35-39 | | 40-44 | | 45-49 | | 50-54 | | 55-59 | | 60-64 | | 65 or older | |
|---------------|---------------|------|-------|-------|-------|-------|-------|-------|-------|-------|-------|-------|-------|-------|-------|------|-------|------|-------|------|-------------|------|
| | N | % | N | % | N | % | N | % | N | % | N | % | N | % | N | % | N | % | N | % | N | % |
| 06/30/2000 | 993 | 4.9% | 4,406 | 21.6% | 3,803 | 18.6% | 3,315 | 16.3% | 3,151 | 15.4% | 2,257 | 11.1% | 1,241 | 6.1% | 618 | 3.0% | 312 | 1.5% | 166 | .8% | 136 | .7% |
| 12/31/2000 | 879 | 4.3% | 4,305 | 21.1% | 3,738 | 18.4% | 3,302 | 16.2% | 3,201 | 15.7% | 2,313 | 11.4% | 1,308 | 6.4% | 678 | 3.3% | 312 | 1.5% | 188 | .9% | 142 | .7% |
| 06/30/2001 | 877 | 4.3% | 4,264 | 20.8% | 3,701 | 18.0% | 3,388 | 16.5% | 3,153 | 15.4% | 2,418 | 11.8% | 1,362 | 6.6% | 709 | 3.5% | 327 | 1.6% | 187 | .9% | 149 | .7% |
| 12/31/2001 | 910 | 4.3% | 4,384 | 20.8% | 3,711 | 17.6% | 3,425 | 16.2% | 3,225 | 15.3% | 2,536 | 12.0% | 1,446 | 6.9% | 751 | 3.6% | 354 | 1.7% | 200 | .9% | 159 | .8% |
| 06/30/2002 | 905 | 4.2% | 4,409 | 20.5% | 3,784 | 17.6% | 3,443 | 16.0% | 3,199 | 14.9% | 2,654 | 12.3% | 1,543 | 7.2% | 767 | 3.6% | 419 | 1.9% | 197 | .9% | 176 | .8% |
| 12/31/2002 | 814 | 3.8% | 4,482 | 20.7% | 3,796 | 17.5% | 3,393 | 15.7% | 3,140 | 14.5% | 2,764 | 12.8% | 1,636 | 7.6% | 788 | 3.6% | 438 | 2.0% | 215 | 1.0% | 186 | .9% |
| 06/30/2003 | 832 | 3.8% | 4,488 | 20.5% | 3,828 | 17.5% | 3,447 | 15.7% | 3,129 | 14.3% | 2,773 | 12.7% | 1,686 | 7.7% | 837 | 3.8% | 446 | 2.0% | 222 | 1.0% | 206 | .9% |
| 12/31/2003 | 776 | 3.5% | 4,513 | 20.4% | 3,908 | 17.7% | 3,416 | 15.5% | 3,128 | 14.2% | 2,793 | 12.7% | 1,776 | 8.0% | 877 | 4.0% | 469 | 2.1% | 214 | 1.0% | 203 | .9% |
| 06/30/2004 | 795 | 3.6% | 4,472 | 20.0% | 3,992 | 17.9% | 3,430 | 15.3% | 3,092 | 13.8% | 2,868 | 12.8% | 1,860 | 8.3% | 920 | 4.1% | 499 | 2.2% | 218 | 1.0% | 214 | 1.0% |
| 12/31/2004 | 707 | 3.2% | 4,372 | 19.5% | 4,078 | 18.2% | 3,432 | 15.3% | 3,115 | 13.9% | 2,875 | 12.8% | 1,925 | 8.6% | 955 | 4.3% | 535 | 2.4% | 221 | 1.0% | 200 | .9% |
| 06/30/2005 | 598 | 2.7% | 4,238 | 19.2% | 4,020 | 18.2% | 3,382 | 15.3% | 3,083 | 13.9% | 2,847 | 12.9% | 1,948 | 8.8% | 1032 | 4.7% | 515 | 2.3% | 254 | 1.1% | 211 | 1.0% |
| 12/31/2005 | 585 | 2.6% | 4,083 | 18.4% | 4,101 | 18.5% | 3,299 | 14.9% | 3,142 | 14.2% | 2,872 | 12.9% | 2,006 | 9.0% | 1119 | 5.0% | 519 | 2.3% | 258 | 1.2% | 215 | 1.0% |
| 06/30/2006 | 575 | 2.6% | 3,999 | 17.8% | 4,227 | 18.8% | 3,311 | 14.7% | 3,143 | 14.0% | 2,917 | 13.0% | 2,081 | 9.3% | 1201 | 5.3% | 533 | 2.4% | 261 | 1.2% | 232 | 1.0% |
| 12/31/2006 | 556 | 2.4% | 3,908 | 17.1% | 4,384 | 19.1% | 3,289 | 14.4% | 3,285 | 14.3% | 2,922 | 12.8% | 2,196 | 9.6% | 1260 | 5.5% | 575 | 2.5% | 288 | 1.3% | 241 | 1.1% |
| 06/30/2007 | 567 | 2.4% | 3,830 | 16.5% | 4,482 | 19.3% | 3,335 | 14.4% | 3,310 | 14.2% | 2,930 | 12.6% | 2,258 | 9.7% | 1322 | 5.7% | 627 | 2.7% | 329 | 1.4% | 246 | 1.1% |
| 12/31/2007 | 510 | 2.2% | 3,622 | 15.6% | 4,487 | 19.4% | 3,407 | 14.7% | 3,275 | 14.1% | 2,885 | 12.4% | 2,337 | 10.1% | 1423 | 6.1% | 648 | 2.8% | 325 | 1.4% | 265 | 1.1% |
| 06/30/2008 | 508 | 2.2% | 3,577 | 15.6% | 4,426 | 19.3% | 3,348 | 14.6% | 3,190 | 13.9% | 2,850 | 12.4% | 2,342 | 10.2% | 1423 | 6.2% | 710 | 3.1% | 337 | 1.5% | 263 | 1.1% |
| 12/31/2008 | 508 | 2.2% | 3,446 | 15.1% | 4,399 | 19.3% | 3,340 | 14.7% | 3,081 | 13.5% | 2,864 | 12.6% | 2,298 | 10.1% | 1478 | 6.5% | 732 | 3.2% | 362 | 1.6% | 260 | 1.1% |
| 06/30/2009 | 511 | 2.3% | 3,365 | 14.8% | 4,339 | 19.1% | 3,390 | 15.0% | 3,063 | 13.5% | 2,752 | 12.1% | 2,331 | 10.3% | 1510 | 6.7% | 758 | 3.3% | 381 | 1.7% | 272 | 1.2% |
| 12/31/2009 | 442 | 2.0% | 3,267 | 14.5% | 4,281 | 19.0% | 3,419 | 15.2% | 2,994 | 13.3% | 2,746 | 12.2% | 2,339 | 10.4% | 1582 | 7.0% | 782 | 3.5% | 399 | 1.8% | 270 | 1.2% |
| 06/30/2010 | 458 | 2.0% | 3,192 | 14.2% | 4,191 | 18.6% | 3,472 | 15.4% | 2,961 | 13.2% | 2,764 | 12.3% | 2,324 | 10.3% | 1588 | 7.1% | 824 | 3.7% | 399 | 1.8% | 307 | 1.4% |
| 12/31/2010 | 396 | 1.8% | 3,120 | 14.1% | 4,071 | 18.4% | 3,436 | 15.5% | 2,813 | 12.7% | 2,728 | 12.3% | 2,332 | 10.5% | 1607 | 7.3% | 863 | 3.9% | 428 | 1.9% | 323 | 1.5% |
| 06/30/2011 | 405 | 1.8% | 3,130 | 14.3% | 3,935 | 17.9% | 3,503 | 16.0% | 2,715 | 12.4% | 2,686 | 12.2% | 2,281 | 10.4% | 1638 | 7.5% | 878 | 4.0% | 435 | 2.0% | 335 | 1.5% |
| 12/31/2011 | 447 | 2.0% | 3,064 | 13.9% | 3,833 | 17.3% | 3,607 | 16.3% | 2,765 | 12.5% | 2,694 | 12.2% | 2,292 | 10.4% | 1675 | 7.6% | 919 | 4.2% | 457 | 2.1% | 359 | 1.6% |
| 06/30/2012 | 462 | 2.1% | 3,007 | 13.6% | 3,762 | 17.0% | 3,573 | 16.2% | 2,803 | 12.7% | 2,699 | 12.2% | 2,287 | 10.3% | 1724 | 7.8% | 945 | 4.3% | 468 | 2.1% | 390 | 1.8% |
| 12/31/2012 | 424 | 1.9% | 2,931 | 13.3% | 3,694 | 16.8% | 3,589 | 16.3% | 2,860 | 13.0% | 2,608 | 11.8% | 2,264 | 10.3% | 1763 | 8.0% | 1004 | 4.6% | 481 | 2.2% | 425 | 1.9% |
| 06/30/2013 | 422 | 1.9% | 2,993 | 13.4% | 3,710 | 16.7% | 3,672 | 16.5% | 2,828 | 12.7% | 2,610 | 11.7% | 2,297 | 10.3% | 1741 | 7.8% | 1051 | 4.7% | 514 | 2.3% | 444 | 2.0% |
| 12/31/2013 | 367 | 1.7% | 2,908 | 13.1% | 3,698 | 16.7% | 3,670 | 16.6% | 2,818 | 12.7% | 2,573 | 11.6% | 2,268 | 10.2% | 1759 | 7.9% | 1118 | 5.0% | 513 | 2.3% | 472 | 2.1% |
| 06/30/2014 | 334 | 1.5% | 2,846 | 12.7% | 3,744 | 16.8% | 3,711 | 16.6% | 2,850 | 12.8% | 2,612 | 11.7% | 2,230 | 10.0% | 1825 | 8.2% | 1185 | 5.3% | 506 | 2.3% | 498 | 2.2% |
| 12/31/2014 | 322 | 1.4% | 2,784 | 12.4% | 3,774 | 16.9% | 3,688 | 16.5% | 2,938 | 13.1% | 2,599 | 11.6% | 2,209 | 9.9% | 1857 | 8.3% | 1184 | 5.3% | 516 | 2.3% | 514 | 2.3% |
| 06/30/2015 | 316 | 1.4% | 2,788 | 12.3% | 3,763 | 16.7% | 3,696 | 16.4% | 3,007 | 13.3% | 2,588 | 11.5% | 2,226 | 9.9% | 1898 | 8.4% | 1217 | 5.4% | 580 | 2.6% | 518 | 2.3% |
| 12/31/2015 | 331 | 1.5% | 2,758 | 12.1% | 3,815 | 16.8% | 3,709 | 16.3% | 3,087 | 13.6% | 2,566 | 11.3% | 2,182 | 9.6% | 1906 | 8.4% | 1222 | 5.4% | 620 | 2.7% | 538 | 2.4% |
| 06/30/2016 | 340 | 1.5% | 2,740 | 11.9% | 3,892 | 17.0% | 3,756 | 16.4% | 3,168 | 13.8% | 2,506 | 10.9% | 2,251 | 9.8% | 1830 | 8.0% | 1252 | 5.5% | 639 | 2.8% | 559 | 2.4% |
| 12/31/2016 | 340 | 1.5% | 2,728 | 11.8% | 3,863 | 16.7% | 3,886 | 16.8% | 3,235 | 14.0% | 2,499 | 10.8% | 2,209 | 9.5% | 1892 | 8.2% | 1262 | 5.5% | 664 | 2.9% | 567 | 2.4% |
| 06/30/2017 | 352 | 1.5% | 2,656 | 11.4% | 3,913 | 16.7% | 3,934 | 16.8% | 3,369 | 14.4% | 2,497 | 10.7% | 2,207 | 9.4% | 1858 | 7.9% | 1307 | 5.6% | 701 | 3.0% | 592 | 2.5% |
| 12/31/2017 | 317 | 1.3% | 2,661 | 11.2% | 3,931 | 16.6% | 4,016 | 16.9% | 3,494 | 14.7% | 2,585 | 10.9% | 2,205 | 9.3% | 1818 | 7.7% | 1331 | 5.6% | 733 | 3.1% | 627 | 2.6% |
| 06/30/2018 | 351 | 1.5% | 2,566 | 10.8% | 3,924 | 16.5% | 4,038 | 16.9% | 3,584 | 15.0% | 2,606 | 10.9% | 2,205 | 9.2% | 1821 | 7.6% | 1353 | 5.7% | 760 | 3.2% | 643 | 2.7% |
| 12/31/2018 | 335 | 1.4% | 2,467 | 10.4% | 3,833 | 16.1% | 4,000 | 16.8% | 3,581 | 15.1% | 2,637 | 11.1% | 2,240 | 9.4% | 1790 | 7.5% | 1385 | 5.8% | 811 | 3.4% | 676 | 2.8% |

Note: Point-in-time numbers exclude temporary holds.

Table 6. Point-in-Time Prison Populations by Most Serious Offense

| Point-in-Time | Violent Offense | | Property Offense | | Drug Offense | | Public Order Offense | |
|---------------|-----------------|-------|------------------|-------|--------------|-------|----------------------|-------|
| | N | % | N | % | N | % | N | % |
| 06/30/2000 | 11,835 | 59.1% | 4,660 | 23.3% | 2,581 | 12.9% | 934 | 4.7% |
| 12/31/2000 | 11,800 | 59.1% | 4,563 | 22.9% | 2,576 | 12.9% | 1,025 | 5.1% |
| 06/30/2001 | 11,941 | 59.2% | 4,510 | 22.4% | 2,577 | 12.8% | 1,127 | 5.6% |
| 12/31/2001 | 12,106 | 58.5% | 4,574 | 22.1% | 2,769 | 13.4% | 1,233 | 6.0% |
| 06/30/2002 | 12,308 | 58.3% | 4,523 | 21.4% | 2,939 | 13.9% | 1,353 | 6.4% |
| 12/31/2002 | 12,434 | 58.3% | 4,333 | 20.3% | 3,141 | 14.7% | 1,409 | 6.6% |
| 06/30/2003 | 12,495 | 57.8% | 4,343 | 20.1% | 3,269 | 15.1% | 1,492 | 6.9% |
| 12/31/2003 | 12,420 | 57.3% | 4,314 | 19.9% | 3,405 | 15.7% | 1,530 | 7.1% |
| 06/30/2004 | 12,525 | 57.1% | 4,189 | 19.1% | 3,632 | 16.6% | 1,577 | 7.2% |
| 12/31/2004 | 12,589 | 57.6% | 4,013 | 18.4% | 3,574 | 16.4% | 1,671 | 7.6% |
| 06/30/2005 | 12,643 | 58.7% | 3,901 | 18.1% | 3,371 | 15.7% | 1,612 | 7.5% |
| 12/31/2005 | 12,749 | 59.0% | 3,862 | 17.9% | 3,370 | 15.6% | 1,621 | 7.5% |
| 06/30/2006 | 12,958 | 59.3% | 3,887 | 17.8% | 3,316 | 15.2% | 1,676 | 7.7% |
| 12/31/2006 | 13,235 | 59.4% | 3,941 | 17.7% | 3,326 | 14.9% | 1,782 | 8.0% |
| 06/30/2007 | 13,515 | 59.8% | 3,933 | 17.4% | 3,327 | 14.7% | 1,842 | 8.1% |
| 12/31/2007 | 13,573 | 60.1% | 3,807 | 16.9% | 3,246 | 14.4% | 1,945 | 8.6% |
| 06/30/2008 | 13,619 | 60.8% | 3,727 | 16.6% | 3,056 | 13.6% | 2,004 | 8.9% |
| 12/31/2008 | 13,676 | 61.9% | 3,527 | 16.0% | 2,863 | 13.0% | 2,025 | 9.2% |
| 06/30/2009 | 13,757 | 62.7% | 3,489 | 15.9% | 2,732 | 12.4% | 1,978 | 9.0% |
| 12/31/2009 | 13,778 | 62.7% | 3,452 | 15.7% | 2,659 | 12.1% | 2,098 | 9.5% |
| 06/30/2010 | 13,873 | 62.9% | 3,372 | 15.3% | 2,658 | 12.1% | 2,145 | 9.7% |
| 12/31/2010 | 13,797 | 63.4% | 3,303 | 15.2% | 2,558 | 11.8% | 2,108 | 9.7% |
| 06/30/2011 | 13,844 | 64.1% | 3,232 | 15.0% | 2,459 | 11.4% | 2,072 | 9.6% |
| 12/31/2011 | 14,015 | 64.3% | 3,330 | 15.3% | 2,336 | 10.7% | 2,109 | 9.7% |
| 06/30/2012 | 14,139 | 64.8% | 3,355 | 15.4% | 2,303 | 10.5% | 2,036 | 9.3% |
| 12/31/2012 | 14,091 | 64.8% | 3,335 | 15.3% | 2,245 | 10.3% | 2,073 | 9.5% |
| 06/30/2013 | 14,219 | 65.0% | 3,314 | 15.2% | 2,238 | 10.2% | 2,099 | 9.6% |
| 12/31/2013 | 14,236 | 65.4% | 3,257 | 15.0% | 2,208 | 10.1% | 2,058 | 9.5% |
| 06/30/2014 | 14,250 | 64.9% | 3,323 | 15.1% | 2,265 | 10.3% | 2,107 | 9.6% |
| 12/31/2014 | 14,241 | 64.8% | 3,261 | 14.8% | 2,289 | 10.4% | 2,188 | 10.0% |
| 06/30/2015 | 14,399 | 64.7% | 3,289 | 14.8% | 2,331 | 10.5% | 2,253 | 10.1% |
| 12/31/2015 | 14,582 | 65.1% | 3,222 | 14.4% | 2,388 | 10.7% | 2,191 | 9.8% |
| 06/30/2016 | 14,699 | 65.2% | 3,208 | 14.2% | 2,394 | 10.6% | 2,230 | 9.9% |
| 12/31/2016 | 14,845 | 65.3% | 3,212 | 14.1% | 2,495 | 11.0% | 2,188 | 9.6% |
| 06/30/2017 | 15,113 | 65.6% | 3,223 | 14.0% | 2,575 | 11.2% | 2,128 | 9.2% |
| 12/31/2017 | 15,270 | 65.5% | 3,236 | 13.9% | 2,676 | 11.5% | 2,136 | 9.2% |
| 06/30/2018 | 15,456 | 65.9% | 3,155 | 13.5% | 2,724 | 11.6% | 2,109 | 9.0% |
| 12/31/2018 | 15,072 | 67.7% | 2,803 | 12.6% | 2,500 | 11.2% | 1,894 | 8.5% |

Note: Point-in-time numbers exclude temporary holds and inmates without offense data.

Table 7. Point-in-Time Prison Populations with Any Drug, Sex, or OWI Offense

| Point-in-Time | Drug Offenders | | Sex Offenders | | OWI Offenders | |
|---------------|----------------|-------|---------------|-------|---------------|------|
| | N | % | N | % | N | % |
| 06/30/2000 | 3,968 | 19.8% | 3,956 | 19.8% | 540 | 2.7% |
| 12/31/2000 | 3,885 | 19.5% | 4,006 | 20.1% | 645 | 3.2% |
| 06/30/2001 | 3,851 | 19.1% | 4,111 | 20.4% | 742 | 3.7% |
| 12/31/2001 | 4,054 | 19.6% | 4,167 | 20.1% | 839 | 4.1% |
| 06/30/2002 | 4,265 | 20.2% | 4,271 | 20.2% | 987 | 4.7% |
| 12/31/2002 | 4,493 | 21.1% | 4,397 | 20.6% | 1,078 | 5.1% |
| 06/30/2003 | 4,684 | 21.7% | 4,420 | 20.5% | 1,155 | 5.3% |
| 12/31/2003 | 4,849 | 22.4% | 4,429 | 20.4% | 1,220 | 5.6% |
| 06/30/2004 | 5,090 | 23.2% | 4,460 | 20.3% | 1,327 | 6.1% |
| 12/31/2004 | 5,025 | 23.0% | 4,503 | 20.6% | 1,430 | 6.5% |
| 06/30/2005 | 4,851 | 22.5% | 4,562 | 21.2% | 1,441 | 6.7% |
| 12/31/2005 | 4,874 | 22.6% | 4,642 | 21.5% | 1,428 | 6.6% |
| 06/30/2006 | 4,909 | 22.5% | 4,773 | 21.9% | 1,489 | 6.8% |
| 12/31/2006 | 4,997 | 22.4% | 4,916 | 22.1% | 1,554 | 7.0% |
| 06/30/2007 | 5,006 | 22.1% | 5,035 | 22.3% | 1,609 | 7.1% |
| 12/31/2007 | 4,918 | 21.8% | 5,042 | 22.3% | 1,671 | 7.4% |
| 06/30/2008 | 4,715 | 21.0% | 5,064 | 22.6% | 1,731 | 7.7% |
| 12/31/2008 | 4,508 | 20.4% | 5,082 | 23.0% | 1,846 | 8.4% |
| 06/30/2009 | 4,410 | 20.1% | 5,142 | 23.4% | 1,900 | 8.7% |
| 12/31/2009 | 4,310 | 19.6% | 5,215 | 23.7% | 2,001 | 9.1% |
| 06/30/2010 | 4,303 | 19.5% | 5,278 | 23.9% | 1,996 | 9.1% |
| 12/31/2010 | 4,187 | 19.2% | 5,274 | 24.2% | 1,976 | 9.1% |
| 06/30/2011 | 4,063 | 18.8% | 5,263 | 24.4% | 1,941 | 9.0% |
| 12/31/2011 | 3,950 | 18.1% | 5,306 | 24.4% | 1,967 | 9.0% |
| 06/30/2012 | 3,921 | 18.0% | 5,332 | 24.4% | 1,964 | 9.0% |
| 12/31/2012 | 3,861 | 17.8% | 5,357 | 24.6% | 1,998 | 9.2% |
| 06/30/2013 | 3,866 | 17.7% | 5,371 | 24.6% | 1,991 | 9.1% |
| 12/31/2013 | 3,883 | 17.8% | 5,384 | 24.7% | 1,978 | 9.1% |
| 06/30/2014 | 4,021 | 18.3% | 5,373 | 24.5% | 1,991 | 9.1% |
| 12/31/2014 | 4,091 | 18.6% | 5,353 | 24.4% | 2,029 | 9.2% |
| 06/30/2015 | 4,233 | 19.0% | 5,399 | 24.2% | 2,126 | 9.5% |
| 12/31/2015 | 4,335 | 19.4% | 5,425 | 24.2% | 2,086 | 9.3% |
| 06/30/2016 | 4,406 | 19.6% | 5,401 | 24.0% | 2,032 | 9.0% |
| 12/31/2016 | 4,583 | 20.2% | 5,428 | 23.9% | 1,986 | 8.7% |
| 06/30/2017 | 4,824 | 20.9% | 5,494 | 23.8% | 1,936 | 8.4% |
| 12/31/2017 | 5,025 | 21.5% | 5,575 | 23.9% | 1,912 | 8.2% |
| 06/30/2018 | 5,223 | 22.3% | 5,662 | 24.2% | 1,945 | 8.3% |
| 12/31/2018 | 4,999 | 22.4% | 5,552 | 24.9% | 1,847 | 8.3% |

Note: Point-in-time numbers exclude temporary holds and inmates without offense data.

Table 8. Point-in-Time Prison Populations by Estimated Time Left to Serve

| Point-in-Time | Less than 1 year | | 1 to < 2 years | | 2 to < 5 years | | 5 or more years | | Life | |
|---------------|------------------|-------|----------------|-------|----------------|-------|-----------------|-------|-------|------|
| | N | % | N | % | N | % | N | % | N | % |
| 06/30/2000 | 6,570 | 32.8% | 3,587 | 17.9% | 4,935 | 24.7% | 4,014 | 20.1% | 904 | 4.5% |
| 12/31/2000 | 6,180 | 31.0% | 3,875 | 19.4% | 4,941 | 24.7% | 4,047 | 20.3% | 921 | 4.6% |
| 06/30/2001 | 6,265 | 31.1% | 3,915 | 19.4% | 4,909 | 24.4% | 4,131 | 20.5% | 935 | 4.6% |
| 12/31/2001 | 6,698 | 32.4% | 4,071 | 19.7% | 4,706 | 22.8% | 4,258 | 20.6% | 949 | 4.6% |
| 06/30/2002 | 6,833 | 32.3% | 4,265 | 20.2% | 4,601 | 21.8% | 4,461 | 21.1% | 963 | 4.6% |
| 12/31/2002 | 7,039 | 33.0% | 4,227 | 19.8% | 4,521 | 21.2% | 4,547 | 21.3% | 983 | 4.6% |
| 06/30/2003 | 7,315 | 33.9% | 4,153 | 19.2% | 4,533 | 21.0% | 4,603 | 21.3% | 995 | 4.6% |
| 12/31/2003 | 7,426 | 34.3% | 4,134 | 19.1% | 4,508 | 20.8% | 4,602 | 21.2% | 999 | 4.6% |
| 06/30/2004 | 7,582 | 34.6% | 4,246 | 19.4% | 4,452 | 20.3% | 4,635 | 21.1% | 1,008 | 4.6% |
| 12/31/2004 | 7,662 | 35.1% | 4,095 | 18.7% | 4,394 | 20.1% | 4,681 | 21.4% | 1,015 | 4.6% |
| 06/30/2005 | 7,532 | 35.0% | 3,918 | 18.2% | 4,359 | 20.2% | 4,700 | 21.8% | 1,018 | 4.7% |
| 12/31/2005 | 7,481 | 34.6% | 3,952 | 18.3% | 4,401 | 20.4% | 4,745 | 22.0% | 1,023 | 4.7% |
| 06/30/2006 | 7,434 | 34.0% | 4,100 | 18.8% | 4,467 | 20.5% | 4,801 | 22.0% | 1,035 | 4.7% |
| 12/31/2006 | 7,568 | 34.0% | 4,372 | 19.6% | 4,414 | 19.8% | 4,881 | 21.9% | 1,049 | 4.7% |
| 06/30/2007 | 7,809 | 34.5% | 4,375 | 19.3% | 4,359 | 19.3% | 5,011 | 22.2% | 1,063 | 4.7% |
| 12/31/2007 | 8,135 | 36.0% | 4,154 | 18.4% | 4,190 | 18.6% | 5,021 | 22.2% | 1,071 | 4.7% |
| 06/30/2008 | 7,952 | 35.5% | 4,039 | 18.0% | 4,234 | 18.9% | 5,106 | 22.8% | 1,075 | 4.8% |
| 12/31/2008 | 7,559 | 34.2% | 4,058 | 18.4% | 4,258 | 19.3% | 5,135 | 23.2% | 1,081 | 4.9% |
| 06/30/2009 | 7,421 | 33.8% | 4,093 | 18.6% | 4,194 | 19.1% | 5,155 | 23.5% | 1,093 | 5.0% |
| 12/31/2009 | 7,598 | 34.6% | 3,885 | 17.7% | 4,300 | 19.6% | 5,102 | 23.2% | 1,102 | 5.0% |
| 06/30/2010 | 7,486 | 34.0% | 3,780 | 17.1% | 4,452 | 20.2% | 5,215 | 23.7% | 1,115 | 5.1% |
| 12/31/2010 | 7,104 | 32.6% | 3,861 | 17.7% | 4,474 | 20.6% | 5,207 | 23.9% | 1,120 | 5.1% |
| 06/30/2011 | 6,749 | 31.2% | 3,895 | 18.0% | 4,645 | 21.5% | 5,187 | 24.0% | 1,131 | 5.2% |
| 12/31/2011 | 6,919 | 31.8% | 3,914 | 18.0% | 4,676 | 21.5% | 5,146 | 23.6% | 1,135 | 5.2% |
| 06/30/2012 | 6,932 | 31.8% | 3,992 | 18.3% | 4,631 | 21.2% | 5,128 | 23.5% | 1,150 | 5.3% |
| 12/31/2012 | 6,980 | 32.1% | 3,989 | 18.3% | 4,540 | 20.9% | 5,082 | 23.4% | 1,153 | 5.3% |
| 06/30/2013 | 6,989 | 32.0% | 3,981 | 18.2% | 4,663 | 21.3% | 5,074 | 23.2% | 1,163 | 5.3% |
| 12/31/2013 | 6,918 | 31.8% | 3,976 | 18.3% | 4,635 | 21.3% | 5,054 | 23.2% | 1,176 | 5.4% |
| 06/30/2014 | 6,949 | 31.7% | 4,114 | 18.7% | 4,549 | 20.7% | 5,150 | 23.5% | 1,183 | 5.4% |
| 12/31/2014 | 6,938 | 31.6% | 4,174 | 19.0% | 4,386 | 20.0% | 5,298 | 24.1% | 1,183 | 5.4% |
| 06/30/2015 | 7,182 | 32.2% | 4,141 | 18.6% | 4,304 | 19.3% | 5,465 | 24.5% | 1,180 | 5.3% |
| 12/31/2015 | 7,234 | 32.3% | 4,103 | 18.3% | 4,173 | 18.6% | 5,698 | 25.5% | 1,175 | 5.2% |
| 06/30/2016 | 7,229 | 32.1% | 4,243 | 18.8% | 4,023 | 17.9% | 5,852 | 26.0% | 1,184 | 5.3% |
| 12/31/2016 | 7,263 | 31.9% | 4,310 | 19.0% | 4,020 | 17.7% | 5,959 | 26.2% | 1,188 | 5.2% |
| 06/30/2017 | 7,486 | 32.5% | 3,920 | 17.0% | 4,391 | 19.1% | 6,053 | 26.3% | 1,189 | 5.2% |
| 12/31/2017 | 7,692 | 33.0% | 3,372 | 14.5% | 4,895 | 21.0% | 6,172 | 26.5% | 1,187 | 5.1% |
| 06/30/2018 | 7,021 | 29.9% | 3,608 | 15.4% | 5,328 | 22.7% | 6,289 | 26.8% | 1,198 | 5.1% |
| 12/31/2018 | 5,832 | 26.2% | 3,662 | 16.4% | 5,304 | 23.8% | 6,274 | 28.2% | 1,197 | 5.4% |

Note: Point-in-time numbers exclude temporary holds and inmates without offense data.