

DATA TREND SERIES

# *Prison Releases: 2000-2019*



May 2020

**Division of Adult Institutions  
Office of the Secretary - Research and Policy Unit**

Inquiries regarding this report may be directed to the Data and Research Inquiries mailbox:

[WIDOCDataandResearchInquiries@wisconsin.gov](mailto:WIDOCDataandResearchInquiries@wisconsin.gov)

State of Wisconsin  
**Department of Corrections**

DATA TREND SERIES

# *Prison Releases: 2000-2019*

May 2020

## **Table of Contents**

Introduction .....	3
Wisconsin Prison Releases .....	6
Releases by Race.....	7
Releases by Age.....	8
Releases by Type .....	9
Releases by County of Release .....	10
Releases by Time Served.....	11
Releases by Time Served and Most Serious Offense (New Sentence Only Admissions) .....	12
Appendix A: Methodology .....	13
Appendix B: Tables .....	15
Table 1. Total Releases.....	15
Table 2. Releases by Gender .....	16
Table 3. Releases by Race .....	17
Table 4. Releases by Ethnicity .....	18
Table 5. Releases by Age .....	19
Table 6. Releases by Type.....	20
Table 7. Releases by County of Release.....	21
Table 8. Releases with Any Drug, Sex, or OWI Offense by County of Release .....	22
Table 9. Releases by Time Served .....	23
Table 10. Releases by Time Served and Most Serious Offense (New Sentence Only Admissions) .....	24

## Introduction

The Wisconsin prison population has grown substantially over the last 30 years, more than tripling from 1990 to 2019. To present a complete picture of how the prison population has changed, admissions to prison, point-in-time prison population counts, and releases from prison are included in this report series. All three types of data are important to consider when examining changes in the prison population. For example, an increase in the number of releases in one year may be associated with a similar increase in the number of admissions several years prior, or an increase in the overall prison population may be related to an increase in admissions and a simultaneous decrease in releases. While there are many other factors that likely contribute to these changes, examining multiple facets of the prison population is a valuable method for tracking and anticipating changes in the number and types of people that the Wisconsin Department of Corrections (WI DOC) is and will be responsible for. Tracking various aspects of the prison population allows the WI DOC to make appropriate adjustments to its facilities and policies as needed.

The data presented in this report have been rigorously validated to ensure accuracy. This data can also be found in the [DAI Releases Interactive Dashboard](#) on the Data and Research, Interactive Dashboards page of the WI DOC public website.

## *Prison Facilities*

There are 37 correctional institutions and centers throughout the state of Wisconsin. The Division of Adult Institutions (DAI) oversees 19 adult Correctional Facilities and is responsible for the administration of the Wisconsin Correctional Center System (WCCS), which encompasses 16 Correctional Centers. Additionally, this report includes data regarding persons in our care at the Wisconsin Resource Center (WRC) which is administered by the Wisconsin Department of Health Services (DHS) in partnership with the WI DOC. The WRC is a specialized inpatient mental health facility established as a prison under Wisconsin Statute [s. 46.056](#).

The WI DOC uses three security levels for its institutions: maximum, medium, and minimum. Facilities at these three security levels vary by design and features, including physical plant design, level of staffing, and operating procedures. A maximum security facility has the most restrictive level of confinement, while a minimum security facility has the least restrictive, and all security levels offer a wide variety of treatment, education, and work programs. Relatedly, there are four different custody levels assigned to individuals in our care: maximum, medium, minimum, and minimum community. These individual custody levels are determined by a classification system that evaluates people in our care by established criteria. An individual's custody level may be different than the security level of the facility in which they are housed. However, except for those awaiting transfers and in situations where there is a declared emergency or disturbance at an institution, an individual's custody classification shall be no greater than the designated security classification of the institution in which the person in our care is placed.

**Maximum Security** facilities have the highest level of security. These facilities may have features that include but are not limited to, fortified walls, double restrictive fencing, lethal stun fencing, towers, and perimeter vehicle patrols. Housing mostly consists of multiple and single occupant cells. It has the highest staff-to-person-in-our-care ratio, and movement of those in our care is closely supervised. Cell opening and closing is controlled by security staff. These facilities can house individuals of all security levels.

**Medium Security** facilities have perimeter fencing, motor vehicle patrol, and possibly towers. Housing mostly consists of multiple occupant cells along with secure barracks units, and each housing unit is locked at night. Most individuals in our care are able to open and close their own cells, while some are controlled by staff. Security staff provide direct supervision over the persons in our care and sleeping areas. Movement of those in our care is less restrictive than in a maximum security prison.

**Minimum Security** facilities have the least restrictive level of security. Currently, three facilities have single perimeter fencing, while the rest do not have fencing. They do not have towers and most do not have motor vehicle patrols. Housing consists of single, double, and multiple occupant cells along with secure barracks units. Minimum custody individuals in our care at minimum security prisons often have job placements with civilian employers (minimum community custody) or participate in community-based work assignments. There is more freedom in the movement of the persons in our care within these prisons and these individuals may have more privileges and responsibilities than they would at a medium or maximum security facility.

*Prison and Correctional Center Characteristics*

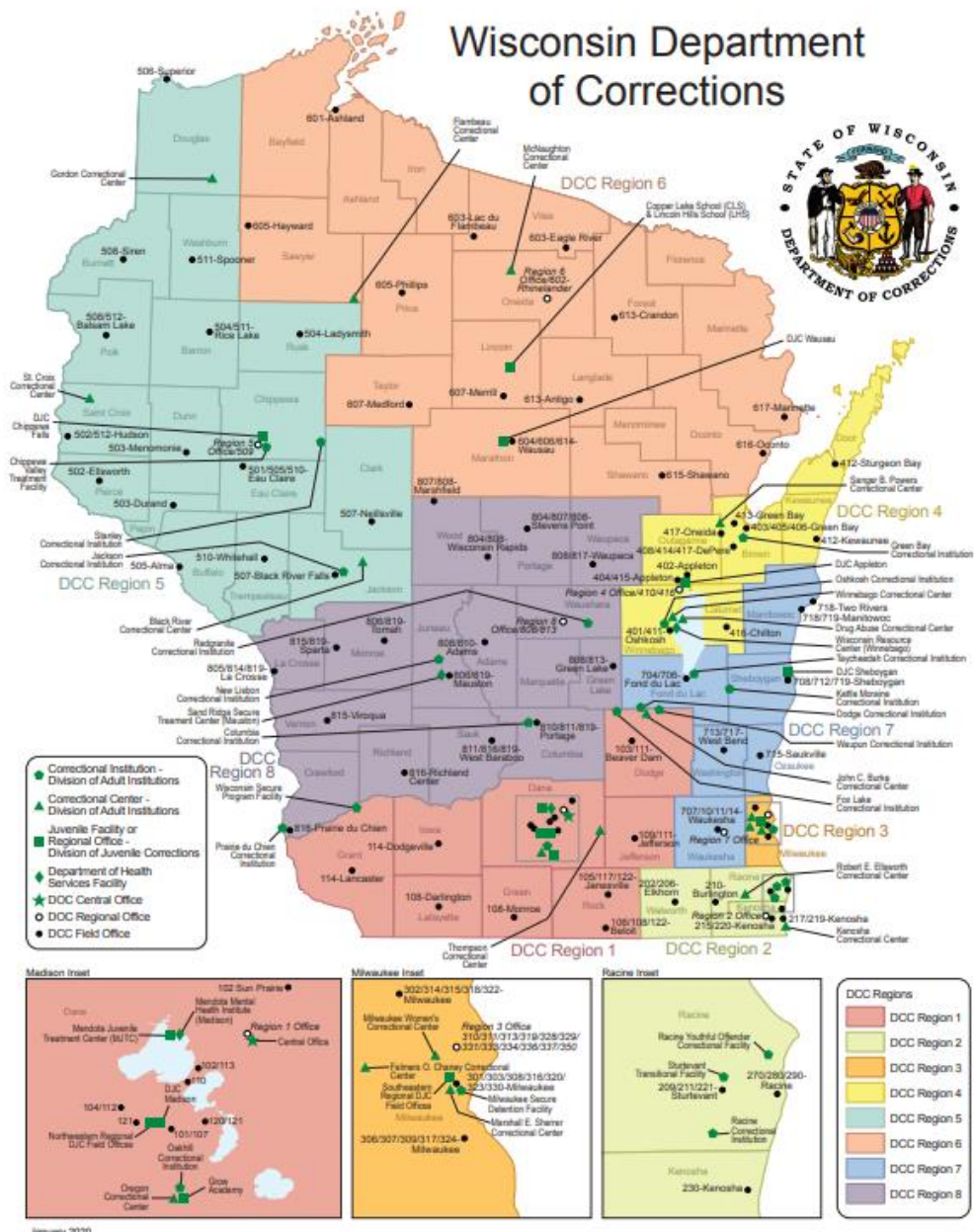
<b>Adult Institutions</b>	<b>Year Opened</b>	<b>Security Level</b>	<b>Operating Capacity</b>	<b>12/31/2019 Prison Population</b>
Chippewa Valley Correctional Treatment Facility	2004	Minimum	508	496
Columbia Correctional Institution	1986	Maximum	845	805
Dodge Correctional Institution	1978	Maximum	1,684	1,651
Fox Lake Correctional Institution	1962	Medium	1,366	1,361
Green Bay Correctional Institution	1898	Maximum	1,101	1,063
Jackson Correctional Institution	1996	Medium	1,012	988
Kettle Moraine Correctional Institution	1962	Medium	1,187	1,182
Milwaukee Secure Detention Facility	2001	Medium	998	754
New Lisbon Correctional Institution	2004	Medium	1,052	1,045
Oakhill Correctional Institution	1976	Minimum	765	754
Oshkosh Correctional Institution	1986	Medium	2,080	2,024
Prairie du Chien Correctional Institution	1997	Medium	522	511
Racine Correctional Institution	1991	Medium	1,703	1,674
Racine Youthful Offender Correctional Facility	1998	Medium	460	459
Redgranite Correctional Institution	2001	Medium	1,028	1,013
Stanley Correctional Institution	2003	Medium	1,595	1,580
Sturtevant Transitional Facility	2003	Minimum	152	148
Waupun Correctional Institution	1851	Maximum	1,265	1,239
Wisconsin Secure Program Facility	1999	Maximum	485	485
Wisconsin Resource Center <sup>1</sup>	1983	Maximum	344	421

<b>Wisconsin Correctional Center System</b>	<b>Year Opened</b>	<b>Security Level</b>	<b>Operating Capacity</b>	<b>12/31/2019 Prison Population</b>
Black River Correctional Center	1962	Minimum	138	137
Drug Abuse Correctional Center	1977	Minimum	294	282
Felmers O. Chaney Correctional Center	2000	Minimum	110	107
Flambeau Correctional Center	1954	Minimum	101	81
Gordon Correctional Center	1950	Minimum	93	87
John C. Burke Correctional Center	1990	Minimum	292	288
Kenosha Correctional Center	1990	Minimum	120	117
Marshall E. Sherrer Correctional Center	1981	Minimum	60	60
McNaughton Correctional Center	1956	Minimum	112	110

<sup>1</sup> Wisconsin Resource Center is administered by the Wisconsin Department of Health Services.

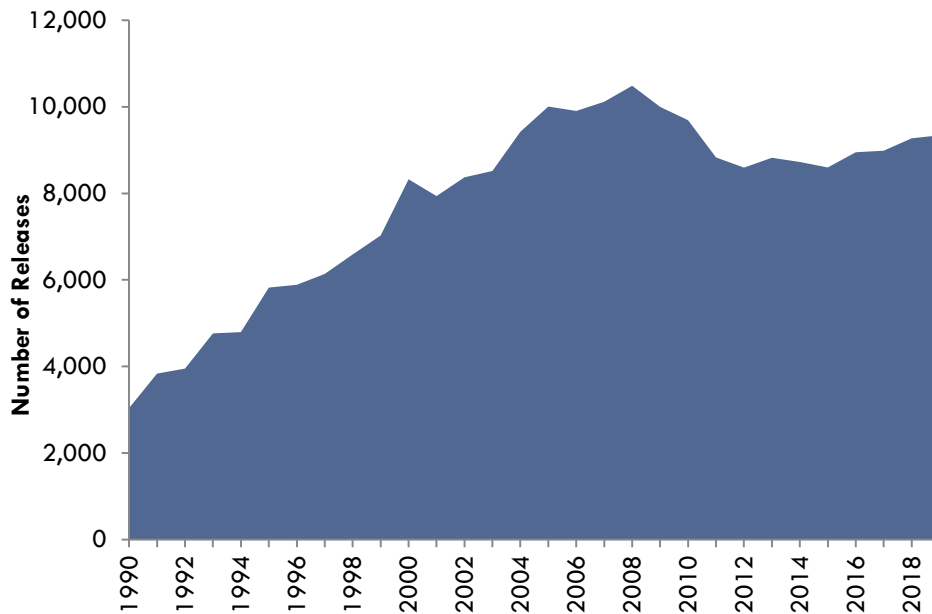
Oregon Correctional Center	1992	Minimum	124	121
Sanger B. Powers Correctional Center	1982	Minimum	120	118
St. Croix Correctional Center	1991	Minimum	120	111
Thompson Correctional Center	1993	Minimum	145	138
Winnebago Correctional Center	1974	Minimum	296	294

Wisconsin Women's Correctional System	Year Opened	Security Level	Operating Capacity	12/31/2019 Prison Population
Milwaukee Women's Correctional Center	2003	Minimum	100	107
Robert E. Ellsworth Correctional Center	1989	Minimum	324	478
Taycheedah Correctional Institution	1921	Maximum	773	890



# WISCONSIN PRISON RELEASES

The releases presented in this report are physical releases from Wisconsin adult prisons or contracted facilities. Contracted facilities house persons in our care who, at the time of their release, were occupying contract beds in county jails, mental health facilities, or in other state prisons. This also includes interstate compact individuals serving another state’s sentence or a federal sentence in a Wisconsin facility. The release counts exclude persons who were never physically admitted and released from a WI DOC prison or contract facility; these individuals were determined, at the time of sentencing, to have already served sufficient time while being held in a county jail. Those released from temporary holds are also excluded. See the [Prison Admissions: 2000-2019 report](#), Appendix C, in the WI DOC Data Trend series for information on temporary holds in WI DOC facilities.



Note: Release numbers exclude temporary holds.

**Prison Releases (1990-2019):** Prison releases have followed approximately the same trend as admissions, increasing from 1990 until peaking at 10,486 in 2008. The number of releases each year since has generally decreased, ending with 9,341 releases in 2019. The table below documents changes in releases by gender from 2000 to 2019. The remainder of this report focuses on releases since 2000.

	2000	% Change 2000-2009	2009	% Change 2009-2019	2019
<b>Male</b>	7,590	+21.1%	9,192	-9.3%	8,340
<b>Female</b>	735	+9.7%	806	+24.2%	1,001
<b>Total Releases</b>	8,325	+20.1%	9,998	-6.6%	9,341

See Appendix B, [Table 1](#), for a complete table of release numbers, and [Table 2](#) for a complete table of release numbers by gender.

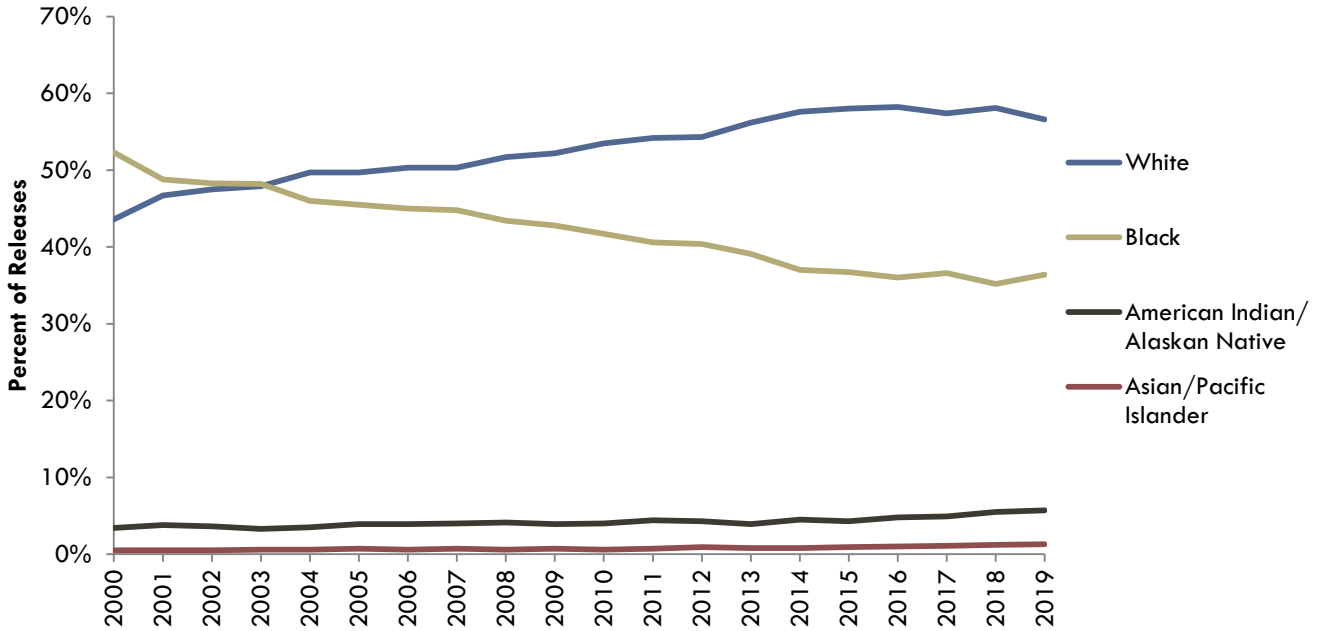


## 2019 Releases

- 36 was the average age
- 89.3% were male
- 36.4% were Black, and 56.6% were White
- 6.4% reported Hispanic or Latino ethnicity
- 83.5% were released on Extended Supervision or Mandatory Release
- 29.0% were released to Milwaukee County
- An average of 774 persons released from our care per month (excluding deaths)
- 10.0% served 5 or more years in prison

## Releases by Race

Across the report period, the percentage of Black individuals released from our care steadily decreased, while the percentage of White individuals released from our care steadily increased. Between 2000 and 2003, there were more Black than White individuals released; however, since 2003, the percentage of White individuals released has been increasingly higher than that of Black individuals released. Releases for American Indian/Alaskan Native and Asian/Pacific Islander persons in our care have remained relatively stable.



Note: Release numbers exclude temporary holds.

- The proportion of **White** individuals released from our care increased over time, from a low of 43.6% in 2000 to a high of 58.2% in 2016.
- The proportion of **Black** individuals released from our care decreased over time, from a high of 52.3% in 2000 to a low of 35.2% in 2018.

### Releases by Race and Ethnicity in 2000, 2009, and 2019

	2000		2009		2019	
	N	%	N	%	N	%
<b>Race</b>						
White	3,633	43.6%	5,221	52.2%	5,288	56.6%
Black	4,351	52.3%	4,279	42.8%	3,399	36.4%
American Indian/Alaskan Native	280	3.4%	394	3.9%	529	5.7%
Asian/Pacific Islander	40	0.5%	69	0.7%	121	1.3%
Did Not Report	21	0.3%	35	0.4%	4	0.0%
<b>Ethnicity*</b>						
Hispanic or Latino	527	6.3%	790	7.9%	597	6.4%

\* Persons in our care in all race categories could identify themselves as Hispanic or Latino.

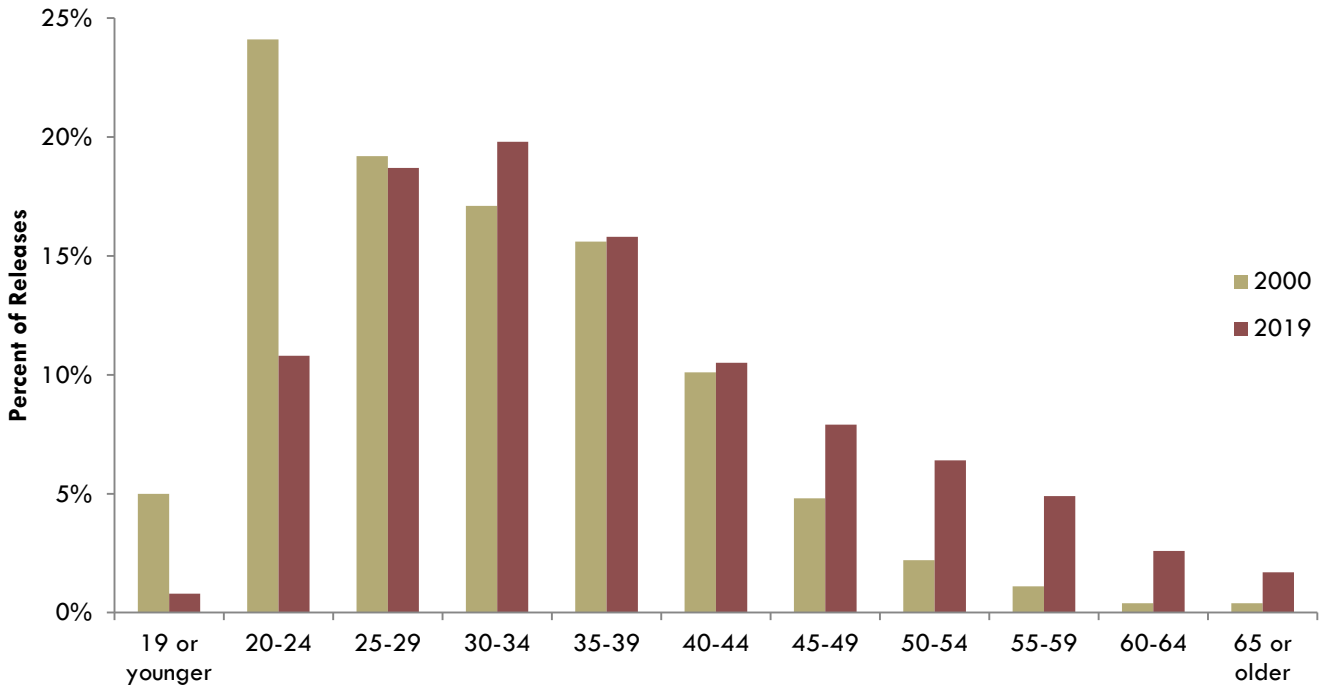
See Appendix B, [Table 3](#), for a complete table of release numbers by race, and [Table 4](#), for a complete table of release numbers by ethnicity.



## Releases by Age

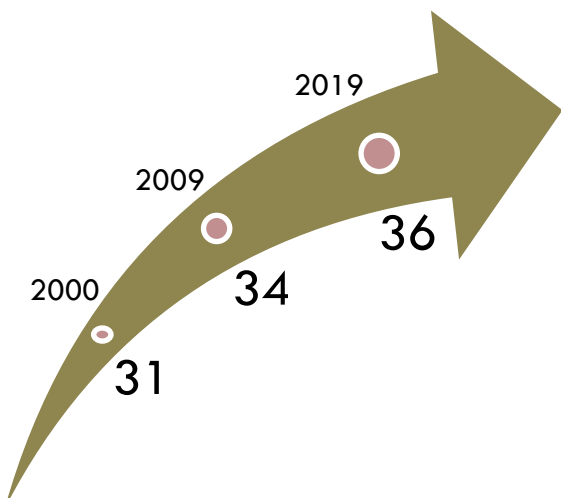
In 2019, nearly two thirds of all releases (65.1%) were for persons in our care between the ages of 20 and 39. However, even though younger individuals made up the majority of releases in 2019, persons released from our care who were 45 or older made up a much larger proportion of all releases than they had in previous years. Releases for these older individuals increased from 8.9% of all releases in 2000 to 23.5% of releases in 2019.

See Appendix B, [Table 5](#), for a table of release numbers by age.



Note: Release numbers exclude temporary holds.

### Average Age at Time of Release



### Releases by Age in 2000 and 2019

Age Category	2000		2019	
	N	%	N	%
19 or younger	420	5.0%	79	0.8%
20-24	2,007	24.1%	1,010	10.8%
25-29	1,595	19.2%	1,747	18.7%
30-34	1,420	17.1%	1,854	19.8%
35-39	1,300	15.6%	1,477	15.8%
40-44	837	10.1%	985	10.5%
45-49	401	4.8%	736	7.9%
50-54	184	2.2%	594	6.4%
55-59	93	1.1%	456	4.9%
60-64	31	0.4%	240	2.6%
65 or older	37	0.4%	163	1.7%

Note: Release numbers exclude temporary holds.

The percentage of releases for individuals ages 50 and older **more than tripled** from 2000 to 2019, increasing from 4.1% to 15.6% of all releases.

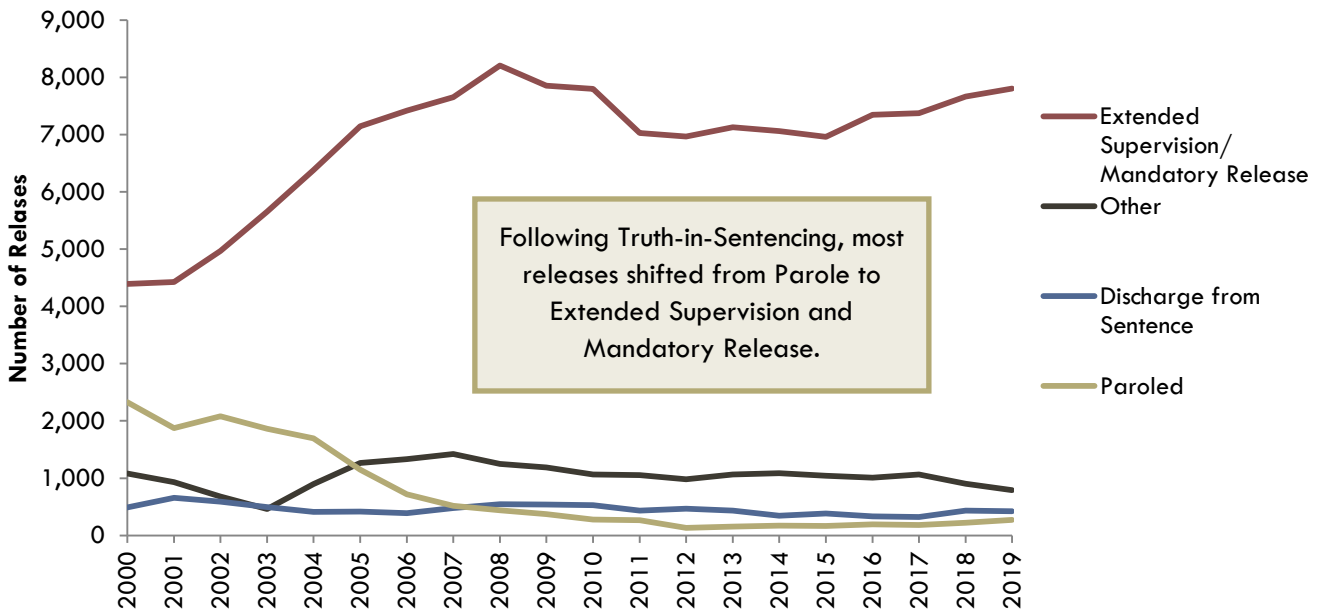


## Releases by Type

Over the past 30 years, the manner in which persons in our care can be released from prison has varied due to changes in state statute. Most importantly, the implementation of Truth in Sentencing in 1999 shifted the release mechanism from Parole to Extended Supervision. Prison release types are defined as follows:

- **Extended Supervision/Mandatory Release:** Individuals released to Extended Supervision have completed their prison sentences under the Truth in Sentencing law and now have a period of community supervision to complete. Individuals released on Mandatory Release are those who committed an offense prior to Truth in Sentencing and are required to be released to community supervision once they have served two-thirds of their sentence.
- **Paroled:** The individual was released to community supervision after receiving a parole grant from the WI Parole Commission.
- **Discharge from Sentence:** The individual's entire sentence was served in prison and they discharged directly into the community with no remaining supervision term.
- **Other:** Releases from Alternatives to Revocation, releases from WI DOC prisons to Federal or other state prisons, releases from short-term sanctions, and releases from the completion of revocation hearings in which the individual's supervision was not revoked.

See Appendix B, [Table 6](#), for a table of release numbers by release type.



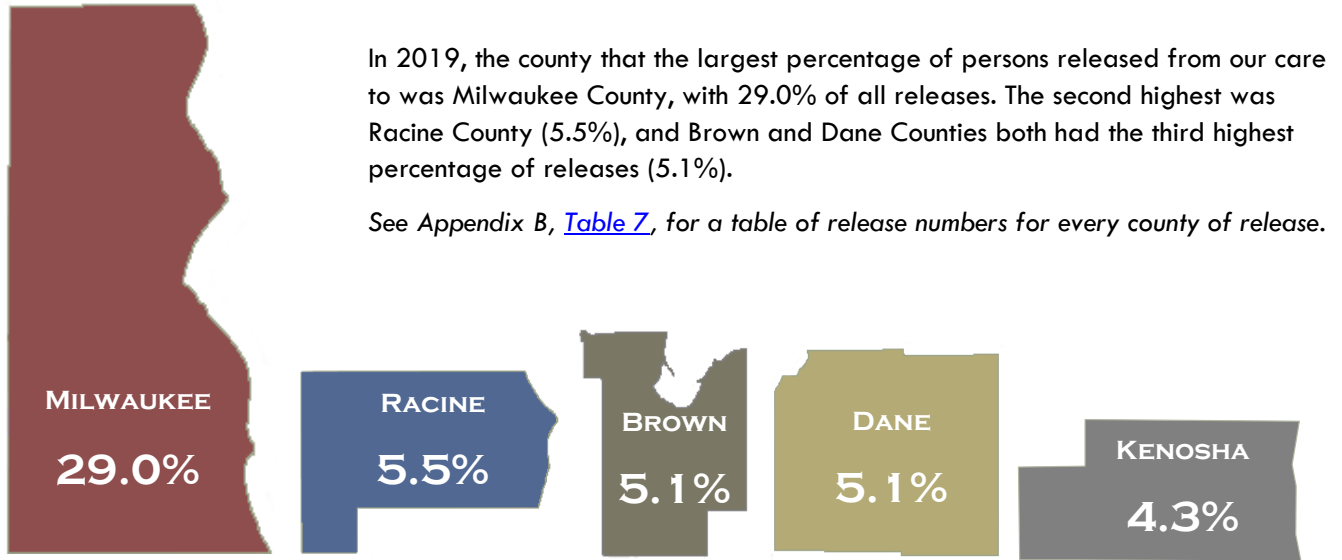
Note: Release numbers exclude temporary holds; graph excludes inmates who died.

## Releases by Security Level of the Facility

Security Level	2000		2009		2019	
	N	%	N	%	N	%
Maximum	1,142	13.8%	1,188	11.9%	1,311	14.1%
Medium	3,606	43.5%	4,273	42.9%	4,176	44.9%
Minimum	3,273	39.5%	3,821	38.4%	3,376	36.3%
Other	269	3.2%	674	6.8%	428	4.6%

Note: Release numbers exclude temporary holds and deaths. "Other" includes jail contract beds, DJC facilities, out of state prisons, and the Intensive Sanction program.

### Releases by County of Release

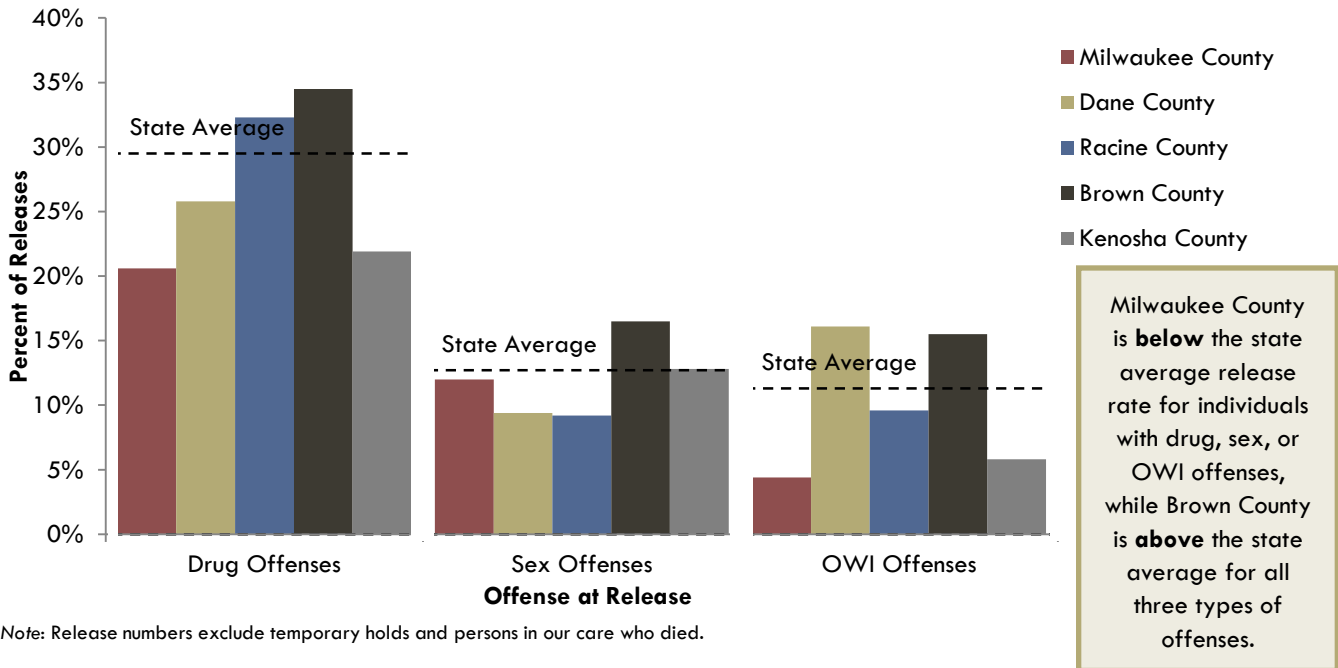


Note: Release numbers exclude temporary holds and persons in our care who died.

### Percent of Individuals Releasing from Our Care to the 2019 Top 5 Release Counties with Any Drug, Sex, or OWI Offense

A person released from our care was included in one or more of the three offense categories if any of their active offenses at the time of release was a drug, sex, or operating while intoxicated (OWI) offense. This means that an individual could be counted in each of the three categories if they had an active drug offense, sex offense, and OWI offense at the time of release. The category that a person released from our care was included in does not necessarily indicate their most serious offense.

See Appendix B, [Table 8](#), for a table of release numbers by any drug, sex, or OWI offense for all counties.

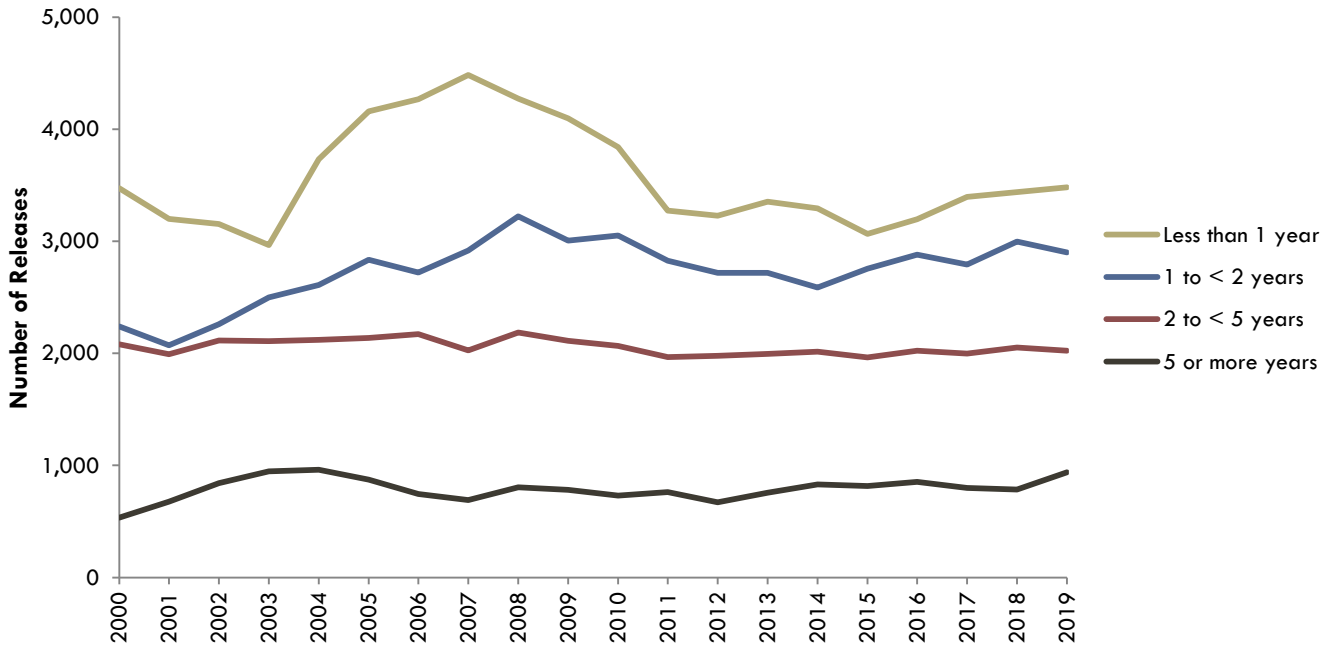


Note: Release numbers exclude temporary holds and persons in our care who died.

## Releases by Time Served

Time served was calculated as the time between an individual's admission to and release from a WI prison. The majority of people released from our care between 2000 and 2019 served less than two years in prison (a yearly average of 68.7% of all releases). Of the 2019 releases, 3,482 (37.3%) individuals served less than one year and 938 (10.0%) individuals served five or more years.

See Appendix B, [Table 9](#), for a table of release numbers by time served.



Note: Release numbers exclude temporary holds.

Over the last 20 years

The number of individuals released from our care who served **less than one year** in prison has fluctuated, but overall **increased** by only 0.3%, from 3,472 to 3,482.

The number of individuals released from our care who served **five or more years** in prison **increased** by 75.7%, from 534 to 938.

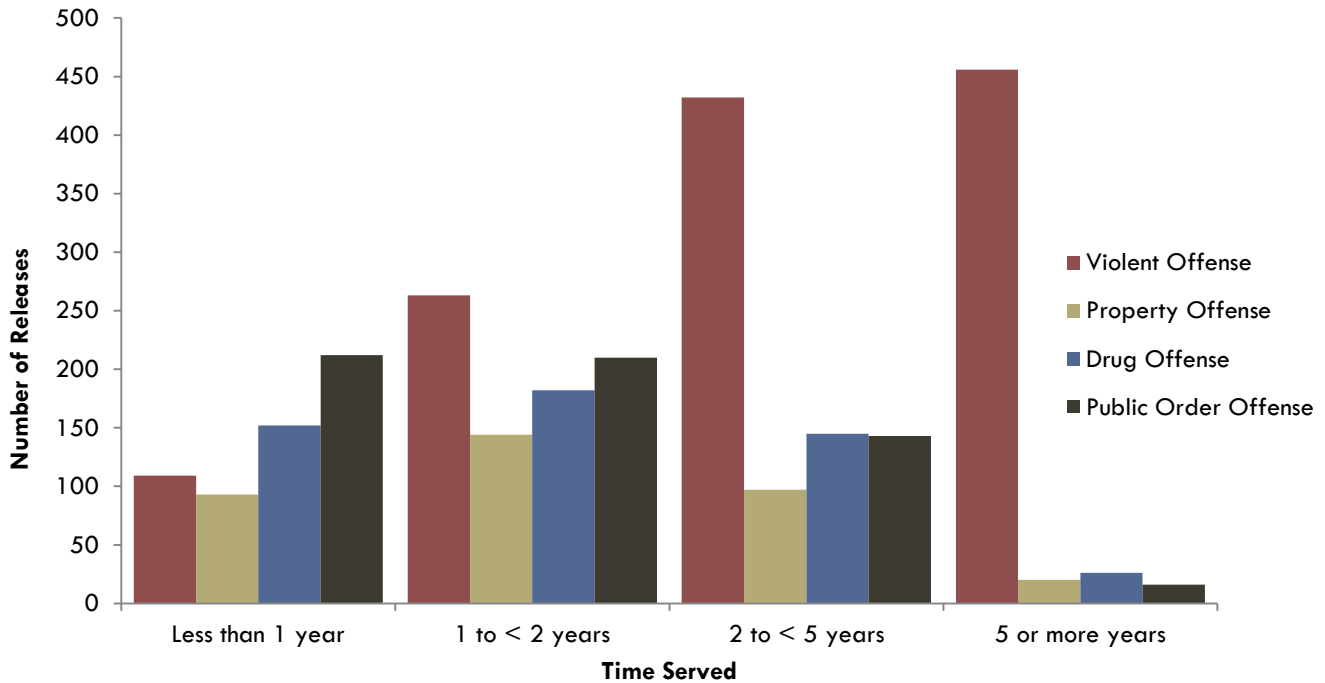
The average number of years a person released from our care served **increased** by 37.3%, from 1.9 to 2.5 years.

344 individuals serving life sentences were released, and the majority (91.6%) served five or more years in prison.

### Releases by Time Served and Most Serious Offense (New Sentence Only Admissions)

Offenses committed by individuals released from the care of the WI DOC were separated into four offense categories: violent offenses, property offenses, drug offenses, and public order offenses. Offense categories were based on the Association of State Correctional Administrators' (ASCA) Performance-Based Measures System standards. Many individuals released from our care were convicted of multiple offenses; for this reason, an individual's most serious offense was selected for this analysis. The graph below displays data for releases from "New Sentence Only" admissions (those admitted because they received a new prison sentence).

See Appendix B, [Table 10](#), for a table of release numbers by time served and most serious offense for New Sentence Only admissions.



Note: Release numbers exclude temporary holds and persons in our care who died.

Average Time Served: 2000 - 2019	<b>Violent Offense</b>	<ul style="list-style-type: none"> <li>An average of <b>68.3%</b> of released individuals with violent offenses served 2 or more years.</li> <li><b>31.7%</b> served 5 or more years.</li> </ul>
	<b>Property Offense</b>	<ul style="list-style-type: none"> <li><b>37.3%</b> of those released with property offenses served between 1 and less than 2 years.</li> </ul>
	<b>Drug Offense</b>	<ul style="list-style-type: none"> <li><b>40.7%</b> of released individuals with drug offenses served between 1 and less than 2 years.</li> </ul>
	<b>Public Order Offense</b>	<ul style="list-style-type: none"> <li>An average of <b>79.4%</b> of released individuals with public order offenses served less than 2 years.</li> <li><b>48.1%</b> served between 1 and less than 2 years.</li> </ul>

## Appendix A: Methodology

### *Releases*

The releases data presented in this report include all physical releases from WI DOC adult institutions. Each release in a calendar year was counted; therefore an individual may be counted more than once in a year if they were released multiple times in that year. Sometimes individuals who receive prison sentences serve the entire sentence in county jail (due to processing time in the criminal justice system). When this happens, an admission to prison must still be entered in the WI DOC data system, with a corresponding release on the same day; however, the individual never physically enters a WI DOC institution. These types of admissions are called “paper admissions”, and releases from “paper admissions” were excluded from the release data presented in this report.

### *Releases by Type*

Over the past 30 years, there have been a number of changes in the manner in which persons in our care can be released from prison due to changes in Wisconsin law. Offenses that occurred on or after June 1, 1984 and prior to December 31, 1999 are sentenced under 1983 WI Act 528 (referred to as “New Law”). Under that law, a Mandatory Release (MR) date was established at two-thirds of the sentence length, and is the date on which a person in our care must be released from prison if not granted discretionary Parole. Some serious felonies committed on or after April 21, 1994 but prior to December 31, 1999 have presumptive MR dates.

A number of years after Act 528 was created, Truth in Sentencing (TIS) was enacted, affecting sentencing for offenses that occurred on or after December 31, 1999. This change allowed courts to impose a bifurcated sentence that consists of a term of confinement in prison followed by a term of Extended Supervision (ES). The implementation of TIS shifted the release mechanism from Parole and Mandatory Release to Extended Supervision. Although most persons in our care now release from prison to supervision (Extended Supervision or Mandatory Release), some individuals are released to Parole (termed “Paroled”); still others serve their entire sentence in prison, and discharge directly to the community with no remaining supervision term (termed “Discharge from Sentence”). This can occur when a person is on supervision following a release from prison and is revoked, and is then required to serve the remainder of their sentence in prison. Additionally, the WI DOC may extend the confinement portion of an individual’s sentence for time spent in restrictive housing. Releases in the “Other” category include releases from Alternatives to Revocation, releases from WI DOC prisons to Federal or other state prisons, and releases after the completion of a revocation hearing in which the individual’s supervision was not revoked.

### *Releases by County*

Release county is based on the location of the DCC agent that a person in our care is assigned to, as of their release date. In most cases, individuals are assigned agents in the county that they are planning to return to. Also, persons in our care are usually assigned agents regardless of how they are released; even if they are not serving any community supervision post release, they are still assigned an agent. Even so, it is possible that some persons in our care will not have an agent assigned to them, including those that are moving out of state immediately following release. Because some less populated counties do not have DCC units (such as Iron), this number will underestimate these counties and may overestimate surrounding counties that do have DCC units (such as Ashland).

### *Releases with Any Drug, Sex, or OWI Offense*

A person released from our care was included in one or more of these three offense categories if any of their active offenses at the time of release were a drug, sex, or OWI offense. This means that an individual could have been counted in each of the three categories if they had an active drug offense, sex offense, and OWI offense at the time of release. The category that a person released from our care was included in does not necessarily indicate their most serious offense.

### *Releases by Time Served*

Time served was calculated as the time between an individual's admission to and release from a WI DOC prison. This does not account for time spent in county jail prior to admission to a WI DOC prison or jail credits given at the time of sentencing. It is simply a measure of the amount of time a person was physically in a WI DOC prison.

### *Releases by Most Serious Offense*

Offense categories were based on the Association of State Correctional Administrators' (ASCA) Performance-Based Measures System standards. While the ASCA standards were followed as closely as possible in the categorization of offenses, supplementary rules were developed to aid in categorizing statutes that did not clearly fit into one category or another. Offense categorization methodology is available upon request.

Offenses committed by persons released from the care of the WI DOC were separated into four offense categories: violent offenses, property offenses, drug offenses, and public order offenses. Offenses included in this report represented an individual's most serious offense. The most serious offense was selected based on the order of the categories listed above, with violent offenses as the most serious and public order offenses as the least serious.

For the most serious offense analysis, releases were not counted if the person released from our care did not have an active offense at the time of release. Occasionally, an individual appeared to not have any active offenses on a particular release date due to data entry error, and/or due to the logic used to accurately align offenses with specific points in time. Although the offense exists in the WI DOC data system, those offenses were not included here. Only persons admitted with a new Wisconsin sentence were included; interstate compact individuals (with no Wisconsin sentence) were excluded.

## Appendix B: Tables

*Table 1. Total Releases*

Release Year	Total Releases
1990	3,040
1991	3,835
1992	3,951
1993	4,764
1994	4,794
1995	5,823
1996	5,887
1997	6,138
1998	6,588
1999	7,026
2000	8,325
2001	7,937
2002	8,370
2003	8,517
2004	9,423
2005	10,005
2006	9,904
2007	10,116
2008	10,486
2009	9,998
2010	9,690
2011	8,830
2012	8,594
2013	8,822
2014	8,724
2015	8,598
2016	8,949
2017	8,985
2018	9,271
2019	9,341

*Note:* Release numbers exclude temporary holds.



*Table 2. Releases by Gender*

Release Year	Total	Male		Female	
	N	N	%	N	%
2000	8,325	7,590	91.2%	735	8.8%
2001	7,937	7,216	90.9%	721	9.1%
2002	8,370	7,638	91.3%	732	8.7%
2003	8,517	7,797	91.5%	720	8.5%
2004	9,423	8,654	91.8%	769	8.2%
2005	10,005	9,184	91.8%	821	8.2%
2006	9,904	9,104	91.9%	800	8.1%
2007	10,116	9,314	92.1%	802	7.9%
2008	10,486	9,582	91.4%	904	8.6%
2009	9,998	9,192	91.9%	806	8.1%
2010	9,690	8,963	92.5%	727	7.5%
2011	8,830	8,105	91.8%	725	8.2%
2012	8,594	7,938	92.4%	656	7.6%
2013	8,822	8,133	92.2%	689	7.8%
2014	8,724	8,056	92.3%	668	7.7%
2015	8,598	7,795	90.7%	803	9.3%
2016	8,949	8,128	90.8%	821	9.2%
2017	8,985	8,136	90.6%	849	9.4%
2018	9,271	8,261	89.1%	1,010	10.9%
2019	9,341	8,340	89.3%	1,001	10.7%

Note: Release numbers exclude temporary holds.

*Table 3. Releases by Race*

Release Year	Black		White		American Indian/ Alaskan Native		Asian/ Pacific Islander		Did Not Report	
	N	%	N	%	N	%	N	%	N	%
2000	4,351	52.3%	3,633	43.6%	280	3.4%	40	0.5%	21	0.3%
2001	3,874	48.8%	3,708	46.7%	305	3.8%	40	0.5%	10	0.1%
2002	4,042	48.3%	3,977	47.5%	299	3.6%	44	0.5%	8	0.1%
2003	4,103	48.2%	4,077	47.9%	283	3.3%	49	0.6%	5	0.1%
2004	4,339	46.0%	4,683	49.7%	330	3.5%	59	0.6%	12	0.1%
2005	4,548	45.5%	4,969	49.7%	389	3.9%	72	0.7%	27	0.3%
2006	4,456	45.0%	4,984	50.3%	388	3.9%	57	0.6%	19	0.2%
2007	4,532	44.8%	5,093	50.3%	404	4.0%	68	0.7%	19	0.2%
2008	4,548	43.4%	5,425	51.7%	435	4.1%	62	0.6%	16	0.2%
2009	4,279	42.8%	5,221	52.2%	394	3.9%	69	0.7%	35	0.4%
2010	4,037	41.7%	5,185	53.5%	386	4.0%	59	0.6%	23	0.2%
2011	3,588	40.6%	4,784	54.2%	389	4.4%	61	0.7%	8	0.1%
2012	3,476	40.4%	4,670	54.3%	371	4.3%	75	0.9%	2	0.0%
2013	3,447	39.1%	4,955	56.2%	346	3.9%	73	0.8%	1	0.0%
2014	3,232	37.0%	5,022	57.6%	395	4.5%	72	0.8%	3	0.0%
2015	3,155	36.7%	4,987	58.0%	373	4.3%	80	0.9%	3	0.0%
2016	3,218	36.0%	5,206	58.2%	431	4.8%	90	1.0%	4	0.0%
2017	3,286	36.6%	5,161	57.4%	440	4.9%	95	1.1%	3	0.0%
2018	3,259	35.2%	5,389	58.1%	508	5.5%	109	1.2%	6	0.1%
2019	3,399	36.4%	5,288	56.6%	529	5.7%	121	1.3%	4	0.0%

Note: Release numbers exclude temporary holds.

*Table 4. Releases by Ethnicity*

Release Year	Hispanic or Latino		Not Hispanic or Latino		Did Not Report	
	N	%	N	%	N	%
2000	527	6.3%	5,799	69.7%	1,999	24.0%
2001	593	7.5%	5,469	68.9%	1,875	23.6%
2002	610	7.3%	5,780	69.1%	1,980	23.7%
2003	634	7.4%	5,790	68.0%	2,093	24.6%
2004	729	7.7%	6,158	65.4%	2,536	26.9%
2005	762	7.6%	6,302	63.0%	2,941	29.4%
2006	779	7.9%	6,105	61.6%	3,020	30.5%
2007	777	7.7%	5,991	59.2%	3,348	33.1%
2008	799	7.6%	5,943	56.7%	3,744	35.7%
2009	790	7.9%	5,301	53.0%	3,907	39.1%
2010	800	8.3%	4,531	46.8%	4,359	45.0%
2011	708	8.0%	3,245	36.7%	4,877	55.2%
2012	661	7.7%	2,773	32.3%	5,160	60.0%
2013	679	7.7%	2,448	27.7%	5,695	64.6%
2014	646	7.4%	2,199	25.2%	5,879	67.4%
2015	646	7.5%	2,333	27.1%	5,619	65.4%
2016	635	7.1%	2,393	26.7%	5,921	66.2%
2017	619	6.9%	2,698	30.0%	5,668	63.1%
2018	632	6.8%	2,961	31.9%	5,678	61.2%
2019	597	6.4%	3,214	34.4%	5,530	59.2%

Note: Release numbers exclude temporary holds.

**Table 5. Releases by Age**

Release Year	19 or younger		20-24		25-29		30-34		35-39		40-44		45-49		50-54		55-59		60-64		65 or older	
	N	%	N	%	N	%	N	%	N	%	N	%	N	%	N	%	N	%	N	%	N	%
2000	420	5.0%	2,007	24.1%	1,595	19.2%	1,420	17.1%	1,300	15.6%	837	10.1%	401	4.8%	184	2.2%	93	1.1%	31	0.4%	37	0.4%
2001	304	3.8%	1,881	23.7%	1,495	18.8%	1,342	16.9%	1,205	15.2%	889	11.2%	456	5.7%	196	2.5%	84	1.1%	51	0.6%	34	0.4%
2002	315	3.8%	1,913	22.9%	1,523	18.2%	1,348	16.1%	1,290	15.4%	999	11.9%	550	6.6%	243	2.9%	100	1.2%	49	0.6%	40	0.5%
2003	236	2.8%	1,885	22.1%	1,557	18.3%	1,310	15.4%	1,273	14.9%	1,133	13.3%	612	7.2%	277	3.3%	139	1.6%	48	0.6%	47	0.6%
2004	263	2.8%	2,124	22.5%	1,751	18.6%	1,415	15.0%	1,312	13.9%	1,179	12.5%	758	8.0%	344	3.7%	146	1.5%	75	0.8%	56	0.6%
2005	277	2.8%	2,163	21.6%	1,928	19.3%	1,491	14.9%	1,324	13.2%	1,310	13.1%	840	8.4%	395	3.9%	164	1.6%	61	0.6%	52	0.5%
2006	188	1.9%	2,063	20.8%	1,976	20.0%	1,500	15.1%	1,299	13.1%	1,320	13.3%	849	8.6%	431	4.4%	168	1.7%	60	0.6%	50	0.5%
2007	202	2.0%	2,005	19.8%	2,067	20.4%	1,433	14.2%	1,402	13.9%	1,264	12.5%	965	9.5%	456	4.5%	182	1.8%	80	0.8%	60	0.6%
2008	176	1.7%	1,852	17.7%	2,230	21.3%	1,564	14.9%	1,430	13.6%	1,253	11.9%	1,041	9.9%	552	5.3%	217	2.1%	96	0.9%	75	0.7%
2009	180	1.8%	1,747	17.5%	2,113	21.1%	1,513	15.1%	1,343	13.4%	1,166	11.7%	975	9.8%	543	5.4%	255	2.6%	100	1.0%	63	0.6%
2010	174	1.8%	1,673	17.3%	2,034	21.0%	1,524	15.7%	1,197	12.4%	1,116	11.5%	958	9.9%	587	6.1%	282	2.9%	84	0.9%	61	0.6%
2011	124	1.4%	1,499	17.0%	1,905	21.6%	1,384	15.7%	1,027	11.6%	1,023	11.6%	838	9.5%	583	6.6%	268	3.0%	107	1.2%	72	0.8%
2012	97	1.1%	1,454	16.9%	1,784	20.8%	1,508	17.5%	966	11.2%	990	11.5%	757	8.8%	598	7.0%	277	3.2%	102	1.2%	61	0.7%
2013	129	1.5%	1,438	16.3%	1,776	20.1%	1,539	17.4%	1,057	12.0%	971	11.0%	787	8.9%	625	7.1%	299	3.4%	115	1.3%	86	1.0%
2014	87	1.0%	1,376	15.8%	1,816	20.8%	1,570	18.0%	1,068	12.2%	839	9.6%	764	8.8%	612	7.0%	342	3.9%	140	1.6%	110	1.3%
2015	74	0.9%	1,204	14.0%	1,790	20.8%	1,571	18.3%	1,083	12.6%	902	10.5%	720	8.4%	636	7.4%	371	4.3%	136	1.6%	111	1.3%
2016	71	0.8%	1,273	14.2%	1,880	21.0%	1,610	18.0%	1,178	13.2%	813	9.1%	738	8.2%	674	7.5%	408	4.6%	176	2.0%	128	1.4%
2017	91	1.0%	1,193	13.3%	1,854	20.6%	1,686	18.8%	1,238	13.8%	857	9.5%	738	8.2%	633	7.0%	401	4.5%	170	1.9%	124	1.4%
2018	86	0.9%	1,091	11.8%	1,933	20.8%	1,804	19.5%	1,444	15.6%	883	9.5%	709	7.6%	565	6.1%	424	4.6%	183	2.0%	149	1.6%
2019	79	0.8%	1,010	10.8%	1,747	18.7%	1,854	19.8%	1,477	15.8%	985	10.5%	736	7.9%	594	6.4%	456	4.9%	240	2.6%	163	1.7%

Note: Release numbers exclude temporary holds.

*Table 6. Releases by Type*

Release Year	Extended Supervision/ Mandatory Release		Discharge from Sentence		Paroled		Other		Death	
	N	%	N	%	N	%	N	%	N	%
2000	4,392	52.8%	490	5.9%	2,325	27.9%	1,083	13.0%	35	0.4%
2001	4,425	55.8%	657	8.3%	1,873	23.6%	932	11.7%	50	0.6%
2002	4,969	59.4%	591	7.1%	2,078	24.8%	680	8.1%	52	0.6%
2003	5,656	66.4%	497	5.8%	1,862	21.9%	460	5.4%	42	0.5%
2004	6,378	67.7%	409	4.3%	1,698	18.0%	898	9.5%	40	0.4%
2005	7,147	71.4%	415	4.1%	1,146	11.5%	1,266	12.7%	31	0.3%
2006	7,416	74.9%	389	3.9%	720	7.3%	1,334	13.5%	45	0.5%
2007	7,654	75.7%	481	4.8%	516	5.1%	1,422	14.1%	43	0.4%
2008	8,207	78.3%	546	5.2%	441	4.2%	1,247	11.9%	45	0.4%
2009	7,854	78.6%	538	5.4%	374	3.7%	1,190	11.9%	42	0.4%
2010	7,796	80.5%	528	5.4%	275	2.8%	1,066	11.0%	25	0.3%
2011	7,028	79.6%	434	4.9%	265	3.0%	1,054	11.9%	49	0.6%
2012	6,964	81.0%	469	5.5%	132	1.5%	983	11.4%	46	0.5%
2013	7,125	80.8%	435	4.9%	152	1.7%	1,065	12.1%	45	0.5%
2014	7,063	81.0%	347	4.0%	171	2.0%	1,085	12.4%	58	0.7%
2015	6,962	81.0%	383	4.5%	164	1.9%	1,042	12.1%	47	0.5%
2016	7,345	82.1%	335	3.7%	192	2.1%	1,009	11.3%	68	0.8%
2017	7,372	82.0%	322	3.6%	183	2.0%	1,065	11.9%	43	0.5%
2018	7,662	82.6%	434	4.7%	223	2.4%	900	9.7%	52	0.6%
2019	7,802	83.5%	425	4.5%	271	2.9%	793	8.5%	50	0.5%

Note: Release numbers exclude temporary holds.

*Table 7. Releases by County of Release*

County of Release	Prison Releases		County of Release	Prison Releases	
	N	%		N	%
Adams	29	0.3%	Marinette	92	1.0%
Ashland	67	0.7%	Marquette	16	0.2%
Barron	66	0.7%	Menominee	34	0.4%
Bayfield	2	0.0%	Milwaukee	2,694	29.0%
Brown	478	5.1%	Monroe	74	0.8%
Buffalo	6	0.1%	Oconto	65	0.7%
Burnett	22	0.2%	Oneida	33	0.4%
Calumet	22	0.2%	Outagamie	269	2.9%
Chippewa	61	0.7%	Ozaukee	56	0.6%
Clark	24	0.3%	Pepin	1	0.0%
Columbia	66	0.7%	Pierce	19	0.2%
Crawford	17	0.2%	Polk	55	0.6%
Dane	477	5.1%	Portage	69	0.7%
Dodge	104	1.1%	Price	12	0.1%
Door	31	0.3%	Racine	511	5.5%
Douglas	73	0.8%	Richland	25	0.3%
Dunn	37	0.4%	Rock	294	3.2%
Eau Claire	146	1.6%	Rusk	25	0.3%
Florence	4	0.0%	Sauk	62	0.7%
Fond du Lac	159	1.7%	Sawyer	64	0.7%
Forest	29	0.3%	Shawano	70	0.8%
Grant	41	0.4%	Sheboygan	162	1.7%
Green	37	0.4%	St. Croix	43	0.5%
Green Lake	21	0.2%	Taylor	20	0.2%
Iowa	19	0.2%	Trempealeau	27	0.3%
Iron	0	0.0%	Vernon	20	0.2%
Jackson	42	0.5%	Vilas	63	0.7%
Jefferson	112	1.2%	Walworth	132	1.4%
Juneau	39	0.4%	Washburn	18	0.2%
Kenosha	398	4.3%	Washington	149	1.6%
Kewaunee	38	0.4%	Waukesha	310	3.3%
La Crosse	136	1.5%	Waupaca	54	0.6%
Lafayette	12	0.1%	Waushara	49	0.5%
Langlade	59	0.6%	Winnebago	280	3.0%
Lincoln	44	0.5%	Wood	134	1.4%
Manitowoc	115	1.2%	Unknown	6	0.1%
Marathon	251	2.7%			
<b>Total</b>				<b>9,291</b>	

Note: Release numbers exclude temporary holds and persons in our care who died.

*Table 8. Releases with Any Drug, Sex, or OWI Offense by County of Release*

County of Release	Total	Drug Offenses		Sex Offenses		OWI Offenses	
	N	N	%	N	%	N	%
Milwaukee	2,694	555	20.6%	322	12.0%	119	4.4%
Racine	511	165	32.3%	47	9.2%	49	9.6%
Brown	478	165	34.5%	79	16.5%	74	15.5%
Dane	477	123	25.8%	45	9.4%	77	16.1%
Kenosha	398	87	21.9%	51	12.8%	23	5.8%
Waukesha	310	87	28.1%	41	13.2%	56	18.1%
Rock	294	77	26.2%	31	10.5%	52	17.7%
Winnebago	280	15	5.4%	10	3.6%	6	2.1%
Outagamie	269	92	34.2%	31	11.5%	46	17.1%
Marathon	251	113	45.0%	34	13.5%	32	12.7%
Sheboygan	162	55	34.0%	26	16.0%	16	9.9%
Fond du Lac	159	51	32.1%	25	15.7%	21	13.2%
Washington	149	51	34.2%	25	16.8%	29	19.5%
Eau Claire	146	73	50.0%	19	13.0%	19	13.0%
La Crosse	136	67	49.3%	6	4.4%	5	3.7%
Wood	134	15	11.2%	10	7.5%	6	4.5%
Walworth	132	36	27.3%	39	29.5%	23	17.4%
Manitowoc	115	55	47.8%	14	12.2%	13	11.3%
Jefferson	112	33	29.5%	20	17.9%	16	14.3%
Dodge	104	34	32.7%	6	5.8%	22	21.2%
Marinette	92	42	45.7%	5	5.4%	21	22.8%
All other Counties	1,888	754	39.9%	298	15.8%	327	17.3%
<b>Total</b>	<b>9,291</b>	<b>2,745</b>	<b>29.5%</b>	<b>1,184</b>	<b>12.7%</b>	<b>1,052</b>	<b>11.3%</b>

Note: Release numbers exclude temporary holds and persons in our care who died. "All other Counties" includes those counties that individually had less than 1% of the total proportion of all releases.



*Table 9. Releases by Time Served*

Release Year	Less than 1 year		1 to < 2 years		2 to < 5 years		5 or more years	
	N	%	N	%	N	%	N	%
2000	3,472	41.7%	2,239	26.9%	2,080	24.9%	534	6.4%
2001	3,198	40.3%	2,072	26.1%	1,991	25.0%	676	8.5%
2002	3,153	37.7%	2,261	27.0%	2,115	25.3%	841	10.0%
2003	2,965	34.8%	2,498	29.3%	2,108	24.8%	946	11.1%
2004	3,731	39.6%	2,610	27.7%	2,121	22.6%	961	10.2%
2005	4,160	41.6%	2,836	28.3%	2,136	21.3%	873	8.7%
2006	4,268	43.1%	2,720	27.5%	2,170	21.9%	746	7.5%
2007	4,483	44.3%	2,917	28.8%	2,025	20.0%	691	6.8%
2008	4,273	40.7%	3,223	30.7%	2,185	20.8%	805	7.7%
2009	4,097	41.0%	3,007	30.1%	2,112	21.2%	782	7.8%
2010	3,841	39.6%	3,051	31.5%	2,067	21.4%	731	7.5%
2011	3,274	37.1%	2,826	32.0%	1,967	22.3%	763	8.6%
2012	3,227	37.5%	2,718	31.6%	1,978	23.0%	671	7.8%
2013	3,353	38.0%	2,719	30.8%	1,995	22.6%	755	8.6%
2014	3,294	37.8%	2,586	29.6%	2,014	23.0%	830	9.5%
2015	3,064	35.6%	2,756	32.1%	1,963	22.8%	815	9.5%
2016	3,196	35.7%	2,879	32.2%	2,022	22.6%	852	9.5%
2017	3,397	37.8%	2,793	31.1%	1,997	22.2%	798	8.9%
2018	3,437	37.1%	2,998	32.3%	2,051	22.2%	785	8.5%
2019	3,482	37.3%	2,899	31.0%	2,022	21.7%	938	10.0%

Note: Release numbers exclude temporary holds.

*Table 10. Releases by Time Served and Most Serious Offense (New Sentence Only Admissions)*

Release Year	Violent Offense							
	Less than 1 year		1 to < 2 years		2 to < 5 years		5 or more years	
	N	%	N	%	N	%	N	%
2000	92	10.6%	171	19.7%	373	43.0%	231	26.6%
2001	88	10.0%	183	20.9%	360	41.1%	245	28.0%
2002	94	9.4%	188	18.8%	400	40.0%	320	31.9%
2003	88	8.1%	250	23.0%	394	36.3%	353	32.5%
2004	84	7.8%	252	23.3%	375	34.6%	372	34.3%
2005	98	8.9%	240	21.8%	377	34.3%	387	35.1%
2006	96	9.1%	236	22.5%	418	39.8%	300	28.6%
2007	101	9.7%	232	22.2%	393	37.6%	317	30.4%
2008	85	8.1%	239	22.9%	374	35.8%	346	33.1%
2009	118	11.0%	232	21.6%	390	36.4%	333	31.0%
2010	103	9.4%	269	24.4%	399	36.2%	330	30.0%
2011	103	10.2%	228	22.6%	341	33.8%	336	33.3%
2012	92	9.4%	227	23.3%	359	36.8%	296	30.4%
2013	104	9.9%	248	23.6%	362	34.4%	339	32.2%
2014	104	9.3%	252	22.5%	405	36.2%	358	32.0%
2015	89	7.9%	249	22.2%	422	37.6%	364	32.4%
2016	112	9.6%	279	23.9%	395	33.8%	381	32.6%
2017	102	8.6%	294	24.8%	403	33.9%	388	32.7%
2018	101	8.4%	299	24.9%	422	35.2%	378	31.5%
2019	109	8.7%	263	20.9%	432	34.3%	456	36.2%

Note: Release numbers exclude temporary holds and persons in our care who died.

Release Year	Property Offense							
	Less than 1 year		1 to < 2 years		2 to < 5 years		5 or more years	
	N	%	N	%	N	%	N	%
2000	108	20.7%	166	31.9%	208	40.0%	39	7.5%
2001	58	12.4%	137	29.3%	210	44.9%	62	13.3%
2002	82	15.8%	184	35.5%	176	33.9%	77	14.8%
2003	66	13.5%	179	36.7%	163	33.4%	80	16.4%
2004	102	19.1%	160	30.0%	192	36.0%	80	15.0%
2005	103	19.4%	196	36.8%	179	33.7%	54	10.2%
2006	82	18.1%	156	34.4%	175	38.6%	40	8.8%
2007	67	17.4%	151	39.3%	131	34.1%	35	9.1%
2008	74	17.9%	161	38.9%	123	29.7%	56	13.5%
2009	107	28.8%	116	31.2%	108	29.0%	41	11.0%
2010	93	27.5%	128	37.9%	83	24.5%	34	10.1%
2011	81	25.4%	118	37.0%	83	26.0%	37	11.6%
2012	90	24.7%	150	41.1%	89	24.4%	36	9.9%
2013	96	24.2%	163	41.1%	121	30.4%	17	4.3%
2014	79	20.8%	155	40.9%	118	31.2%	27	7.1%
2015	87	23.1%	159	42.3%	106	28.2%	24	6.4%
2016	74	18.3%	174	43.0%	128	31.6%	29	7.2%
2017	92	22.4%	145	35.3%	142	34.6%	32	7.8%
2018	62	17.3%	156	43.6%	115	32.1%	25	7.0%
2019	93	26.3%	144	40.7%	97	27.4%	20	5.6%

Note: Release numbers exclude temporary holds and persons in our care who died.

Release Year	Drug Offense							
	Less than 1 year		1 to < 2 years		2 to < 5 years		5 or more years	
	N	%	N	%	N	%	N	%
2000	249	30.7%	321	39.6%	221	27.3%	19	2.3%
2001	145	24.5%	242	40.9%	167	28.3%	37	6.3%
2002	126	20.1%	257	40.9%	199	31.7%	46	7.3%
2003	152	20.4%	341	45.8%	211	28.3%	41	5.5%
2004	239	26.5%	368	40.8%	251	27.7%	44	4.9%
2005	246	25.5%	426	44.2%	254	26.3%	37	3.8%
2006	152	20.6%	290	39.3%	252	34.1%	44	6.0%
2007	117	19.5%	258	43.1%	190	31.6%	34	5.7%
2008	114	18.9%	257	42.5%	181	30.0%	52	8.6%
2009	124	24.4%	188	36.9%	146	28.7%	51	10.0%
2010	124	25.1%	182	36.8%	129	26.0%	60	12.1%
2011	149	33.3%	156	34.8%	112	25.1%	31	6.9%
2012	109	27.5%	148	37.3%	105	26.4%	35	8.8%
2013	99	25.3%	154	39.3%	114	29.1%	25	6.4%
2014	121	28.5%	162	38.1%	117	27.5%	25	5.9%
2015	96	22.0%	202	46.2%	110	25.1%	29	6.6%
2016	106	21.8%	220	45.3%	134	27.6%	26	5.3%
2017	131	26.3%	238	47.7%	115	23.0%	15	3.0%
2018	163	31.2%	206	39.4%	132	25.3%	22	4.2%
2019	152	30.1%	182	36.0%	145	28.7%	26	5.1%

Note: Release numbers exclude temporary holds and persons in our care who died.

Release Year	Public Order Offense							
	Less than 1 year		1 to < 2 years		2 to < 5 years		5 or more years	
	N	%	N	%	N	%	N	%
2000	91	46.2%	68	34.5%	31	15.8%	7	3.6%
2001	77	29.5%	136	52.1%	39	14.9%	9	3.4%
2002	78	22.4%	205	58.9%	58	16.7%	7	2.0%
2003	67	17.3%	216	55.7%	99	25.5%	6	1.5%
2004	88	21.1%	224	53.7%	102	24.4%	3	0.7%
2005	113	21.6%	278	53.2%	130	24.8%	2	0.4%
2006	103	24.2%	246	57.9%	70	16.5%	6	1.4%
2007	142	30.7%	226	48.9%	82	17.7%	12	2.6%
2008	157	31.3%	267	53.2%	75	15.0%	3	0.6%
2009	185	33.8%	281	51.4%	76	13.9%	5	0.9%
2010	199	34.6%	303	52.7%	67	11.7%	6	1.0%
2011	181	31.6%	304	53.1%	83	14.5%	5	0.9%
2012	217	37.4%	262	45.2%	94	16.2%	7	1.2%
2013	208	35.9%	274	47.2%	93	16.0%	5	0.9%
2014	209	36.9%	242	42.7%	106	18.7%	10	1.8%
2015	207	32.3%	275	43.0%	148	23.1%	10	1.6%
2016	208	30.3%	325	47.3%	144	20.9%	10	1.5%
2017	238	34.7%	275	40.1%	161	23.5%	12	1.7%
2018	224	39.2%	197	34.5%	141	24.8%	9	1.6%
2019	212	36.5%	210	36.1%	143	24.6%	16	2.8%

Note: Release numbers exclude temporary holds and persons in our care who died.