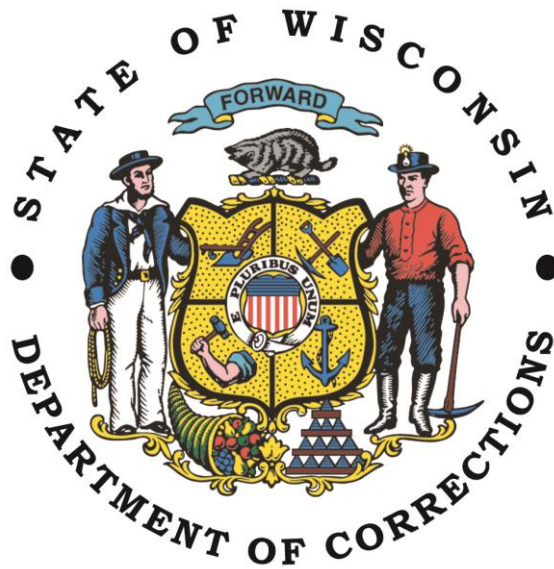


Wisconsin Department of Corrections
Opportunities and Options
Resource Guide

March 2017





WISCONSIN DEPARTMENT OF CORRECTIONS FACILITIES

Maximum Institutions

Columbia Correctional Institution
Dodge Correctional Institution
Green Bay Correctional Institution
Taycheedah Correctional Institution
Waupun Correctional Institution
Wisconsin Secure Program Facility

Medium Institutions

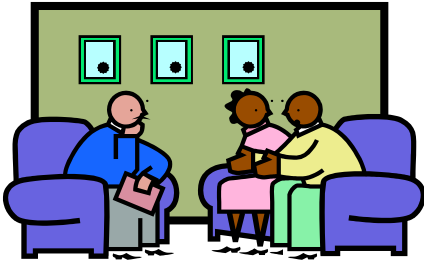
Fox Lake Correctional Institution
Jackson Correctional Institution
Kettle Moraine Correctional Institution
Milwaukee Secure Detention Facility
New Lisbon Correctional Institution
Prairie du Chien Correctional Institution
Racine Correctional Institution
Racine Youthful Offender Correctional Facility
Redgranite Correctional Institution
Stanley Correctional Institution
Oshkosh Correctional Institution
Wisconsin Resource Center

Minimum Institutions

Chippewa Valley Correctional Treatment Facility
Oakhill Correctional Institution
Sturtevant Transitional Facility

Correctional Centers

Black River Correctional Center
Drug Abuse Correctional Center
Felmers O. Chaney Correctional Center
Flambeau Correctional Center
Gordon Correctional Center
John C. Burke Correctional Center
Kenosha Correctional Center
Marshal Sherrer Correctional Center
McNaughton Correctional Center
Milwaukee Women's Correctional Center
Oregon Correctional Center
Robert E. Ellsworth Correctional Center
St. Croix Correctional Center
Sanger Powers Correctional Center
Thompson Correctional Center
Winnebago Correctional Center



WISCONSIN DEPARTMENT OF CORRECTIONS PROGRAMS AND EDUCATION

Treatment

Anger Management (AM)
AODA Residential
Childhood Abuse Counseling (CAC)
Challenge Incarceration Program (CIP)
Cognitive Behavioral Program (CBP)
Domestic Violence (DV)
Earned Release Program (ERP)
Mental Illness Chemical Abuse (MICA)
Parenting
Sex Offender Treatment (SOT)
Sex Offender Treatment Program (SOTP)
Transitional Treatment Center (TTC)

Support Groups

Alcoholic Anonymous (AA)
Self-Management and Recovery Training (SMART)
Narcotics Anonymous (NA)

General Education

General Equivalency Diploma (GED)
High School Equivalency Diploma (HSED)
Adult Basic Education (ABE)
English as a Second Language (ESL)
Special Education (SPED)
Title I
5.09

Career Technical Education (CTE)

Auto Maintenance
Baking
Barbering/Cosmetology
Braille Transcription
Building Maintenance and Construction
Business Applications
Cabinetmaking
Computer Assisted Drafting (CAD)
Custodial Services
Food Service/Culinary Arts
Fork Lift
Graphic Arts
Greenhouse/Garden Center Specialist
Grounds Maintenance
Horticulture
Landscaping
Computer Numerical Control (CNC)
Masonry
Microcomputer Specialist
Motorcycle/Marine Power Tech
Outdoor Products
Office Assistant/Aide
Office Software Applications
Printing
Small Engine Repair
Welding
Woodworking

TABLE OF CONTENTS

Primary Treatment Services.....	5
Education Services.....	7
Library Services.....	11
Inmate Religious Accomodation.....	11
Bureau of Correctional Enterprises.....	12
Re-entry Initiatives	13
Wisconsin Correctional Institutions.....	14
Wisconsin Correctional Center System	25
Wisconsin Women’s Correctional Center System	29

PRIMARY TREATMENT SERVICES

Anger Management Program (AM)

Anger Management is a cognitive-behavioral based program designed to address the needs of violent offenders whose aggressive behaviors tend to be impulsive and reactive rather than instrumental and pre-planned. In addition to cognitive restructuring, AM programs teach offenders cognitive and interpersonal skills to deter and replace violent behaviors. These skills include stress management, impulse control strategies, assertiveness skills, communication skills, identifying personal anger precursors (thoughts and situations that provoke angry reactions), handling criticism and provocation. Lessons are presented by social service staff to groups of eight to 15 offenders. Group sessions are generally 90 minutes in length and held once a week. AM is offered both as a stand-alone program and as a component of Alcohol and other Drug Abuse (AODA) Residential and sex offender treatment programs. AM is offered in both male and female institutions as well as in juvenile institutions.

AODA Residential Program

AODA Residential is a four-month, full-time treatment program provided to offenders with more serious, chronic issues with both substance abuse/dependence and criminal behavior. The program includes substance abuse education and relapse prevention. Issues of criminal behavior and responsible self-management skills are also integral components of the program. Besides increased knowledge about substance abuse, offenders are offered opportunities to gain greater self-awareness, personal control and skills training. Examples are anger management, rational and responsible decision making, social skills, victim impact, problem-solving and conflict management. Residential programs are facilitated by certified substance abuse counselors and overseen by clinical supervisors to groups of 12 to 15 offenders. Residential programs are offered in both male and female institutions. A.R. Phoenix, A New Freedom, is the standardized curriculum for all residential programs.

Challenge Incarceration Program (CIP)

CIP is a statutorily established program that allows judges to sentence non-violent, non-assaultive offenders with substance abuse needs to this full-time, six month intensive program that combines military training with alcohol/drug treatment. Program components are structured around treatment and discipline. Program activities include personal development counseling through criminal and rational thinking, alcohol and drug counseling, educational programming, physical exercise, manual labor, instruction in military bearing, and drill/ceremony. CIP is open-ended and facilitated by certified substance abuse counselors and overseen by a clinical supervisor. CIP is offered to both male and female offenders.

Cognitive Behavioral Program (CBP)

Cognitive Behavioral Programs (such as NICS Thinking for a Change) are designed to assist offenders with identifying and restructuring thought processes that tend to lead to poor outcomes for themselves or others. The programs teach offenders specific skills that assist them in identifying, controlling and changing the personal thinking patterns and underlying beliefs that support their criminal behaviors. In addition to cognitive restructuring, offenders are taught a number of social

skills and problem solving steps. CBP consists of 25-30 lessons and homework assignments. Groups are facilitated by a variety of trained staff to groups of 8-15 offenders. Groups are generally 90 minutes to two hours in length and are held 2-3 times a week for 12-15 weeks. In order to successfully complete the program, participants must actively participate in groups, satisfactorily complete all homework assignments, and demonstrate they have acquired the specific skills taught in the program. CBP is offered in both male and female institutions as well as in juvenile institutions.

Domestic Violence Program (DV)

Domestic violence is cognitive-behavioral based program designed for male offenders who have shown a pattern of abuse/violence to their significant and intimate partners. The curriculum is designed to help batterers identify their own cognitions that have justified violence and enabled them to be abusive to their partners and teach them skills to change their thoughts/beliefs that have led to their abusive behaviors. A major program objective is for the offender to be able to identify alternative beliefs and intervention strategies to end their criminal and abusive behaviors as well as learn and demonstrate non-abusive and non-controlling behaviors.

Dual Diagnosis

Dual diagnosis is a six to 12 month program for offenders diagnosed with a substance use disorder and with a severe and persistent mental illness. Programs are designed as therapeutic communities, which are structured programs in which members work together for their treatment. All participants are actively involved in the community to shape more responsible and appropriate behavior. The programs include psychiatric treatment, therapy groups, psycho-educational groups, individual counseling sessions, pre-release planning and post-release follow-up. Classes include AODA education, mental illness education and management, psychotropic medication regimens, Cognitive Interventions Program, Anger Management, problem-solving, assertiveness training, relaxation techniques, relapse prevention and release planning. Dual diagnosis is facilitated by psychological services staff and social service staff who are certified substance abuse counselors to groups of 14 to 25 offenders. This program is offered to both male and female offenders.

Earned Release Program (ERP)

Driven by statute similar to CIP, ERP allows judges to sentence non-violent, non-assaultive offenders with substance abuse needs to this full-time, four to six month intensive program designed to reduce the incidence of future criminal behavior. At its core, ERP treatment modules include cognitive-based substance abuse programming, cognitive behavioral-based curriculum such as NICs Thinking for a Change which addresses cognitive restructuring, social skills building and problem solving. It additionally addresses an individual's needs as they pertain to family dynamics, Anger Management and employability. Community reintegration is a primary focus throughout the program connecting offenders with the respective Probation and Parole agents during each program phase.

Sex Offender Treatment 2 (SO-2)

SO-2 is a short-term treatment program, lasting six to 12 months, meeting once or twice a week. This program covers topics such as offense disclosure, denial and minimization, victim empathy, cognitive distortions, criminal thinking, and re-offense prevention. Both written homework assignments and group participation are expected. SO-2 is facilitated by psychological and social services staff to groups of 10 to 15 offenders and offered in both male and female institutions.

Sex Offender Treatment 4 (SO-4)

SO-4 is a long-term treatment program. The Oshkosh Sex Offender Treatment Program (SOTP) and the Beacon Program at Racine Correctional Institution are intensive, residential sex offender treatment programs. The program lasts two to five years, depending on the rate of the offender's progress. Both written homework assignments and group participation are expected. There are three basic phases of the SO4 programs:

1. Enhanced Thinking Skills
2. CORE, consisting of 20 blocks covering such topics as offense disclosure, victim empathy, fantasy, re-offending risk factors, and "Future Me" work. This consists of developing ideas about the person the offender is working towards being, including life goals, desires for self-improvement, achievement, and fulfillment, and examining potential setbacks to these goals.
3. Reintegration Maintenance Group (RMG). This phase is intended to assist the offenders in developing a personalized relapse prevention plan.

SO-4 is facilitated by psychological and social services staff to groups of 14 offenders and offered in both male and female institutions.

Violence in Relationships

Violence in Relationships is a cognitive-behavioral based program that identifies the different types of domestic abuse and factors in our society that contributes to the problem of domestic violence. This program also covers issues including why the victims stay in abusive relationships and the impact of domestic abuse on the family. Violence in Relationships is designed for female offenders. Both DV programs are presented by trained facilitators to groups of 11 to 16 offenders. Group sessions are generally 90 minutes in length and are held once or twice a week for a total of three to six months.

EDUCATION SERVICES

The Department of Corrections (DOC) provides inmates the opportunities to improve reading, writing, and mathematics skills, learn Career Technical Education skills, life skills, career awareness skills, and obtain a high school equivalency diploma. Post-secondary Career Technical Education programming is offered in conjunction with the Wisconsin Technical College System. College correspondence courses and MATC courses are also offered.

Test of Adult Basic Education (TABE) Testing

TABE is an achievement test that measures academic skill levels. Every inmate is required to take a short version of the TABE when they enter a DOC Assessment & Evaluation unit. Scores from this test are used to determine the educational needs and goals of each inmate and are considered when placement decisions are made.

All inmates enrolled in school at maximum and medium security institutions, either Career Technical Education or academic, are required to retest with the TABE Full Battery. The TABE will identify strengths and weaknesses and can be used to produce an education plan for each inmate.

TABE testing is considered a required condition of school participation. Refusal to take the test, or not giving an honest effort on the test, will result in immediate disqualification from school and /or conduct report.

Academic

Academic programs include classes that instruct and enhance reading, writing, mathematics and other basic skills necessary for functional literacy and the attainment of a high school equivalency diploma (HSED).

Adult Basic Education (ABE)

All major institutions, except Dodge Correctional Institution (DCI), offer Adult Basic Education instruction. These studies generally include reading, writing, math and life skills. The type of instruction in these areas will vary depending on the individual teacher and site. Instruction may include, among other methods, individualized instruction, computer-assisted instruction, inmate or community tutor assistance, small group instruction, and regular class instruction.

High School Equivalency Diploma Preparation

All major institutions, except DCI, also offer instruction to prepare inmates for the HSED (High School Equivalency Diploma) test. Generally, inmates with academic levels of 9.0 grades or higher in Reading Comprehension or Math Number Operations on the TABE test level D are enrolled in HSED preparation.

Instruction is provided in each of the areas which comprise the HSED:

Citizenship/Civics	Mathematics*
Employability Skills	Science*
Health	Social Studies*
Reasoning Through Language Arts*	

High School Equivalency Diploma Testing

Employability skills: Skills in job seeking, applying for work, retaining a job, and self-development and awareness skills. Required training in this area may be waived based on employment experience.

Career awareness: Instruction in setting short-term and long-term career goals. This section may be addressed during processing at A&E.

Successful completion of Wisconsin Department of Public Instruction tests in Health and Civics or equivalent course credit.

Successful completion of computer-based GED tests in each of the areas marked with an asterisk above. Successful completion is defined as a minimum score of 150 on each test, with a minimum

total score of 600 on all four tests combined. Tests can be retaken after evidence is presented that additional preparation has been made.

Completion award is a Wisconsin High School Equivalency Diploma issued by the Wisconsin Department of Public Instruction.

Title 1

Title 1 is a program for students under the age of 21 who are working in an Adult Basic Education class and need extra assistance in their studies. This program serves as a supplement, or addition, to the normal school program.

5.09

The 5.09 Program is designed in coordination with DPI Standards specifically for inmates who demonstrate sound, strong learning credentials but cannot translate or apply those skills to knowledge acquisition to standard GED testing formats.

Special Education (SPED)

This program is designed for students, under age 22, who have a disability that interferes with their education. Adaptations to the regular classroom instruction, resource room opportunities, or placement in a special class for one or more hours per day, are ways this program assists with the qualified students in achieving high school grades.

English as a Second Language

Institutions offer varying types of opportunities for non-English speaking inmates to improve their English comprehension, reading, and writing skills. The goal is to assist inmates in achieving appropriate levels of competency to participate in treatment and educational programs.

Wisconsin Institutions Literacy Council

This project offers tutoring to inmates in subject areas where they need assistance. Inmate tutors (qualified applicants) are trained in PLATT basic literacy tutoring techniques to assist inmate students become independent readers, writers, and speakers of English. Inmate tutors are hired to a paid position within the institution.

Career Technical Education Related Course Work

All Wisconsin Technical College System (WTCS) certified programs require some related course work. Requirements vary depending on the program. Related course work can include communications, human/job relations, math, occupational success, strategies, student success and small business development.

These courses are different from general education courses. They are designed specifically to accompany Career Technical Education courses and credit is awarded for successful completion.

Non-credit Career Technical Education related classes are also offered at some sites.

Career Technical Education Programs and Courses

Career Technical Education and training is available at most facilities that have on-site education services. All Career Technical Education classes that are offered are affiliated with the Wisconsin Technical College System. Some are short-term classes that provide basic skills in a variety of occupations. Students completing these accredited programs receive certificates, Career Technical Education diplomas, or credit toward a 2-year associate degree. Career Technical Education training is provided in 30 different occupational areas. It is possible in many cases to start a Career Technical Education program at one institution and continue or complete it at another institution. Due to overcrowding issues, individuals are not able to be involved in numerous Career Technical Education programs. Students should concentrate in one occupational area to attain work-related job skills that may be used while incarcerated and after release.

College Programs

Correspondence courses for college credit are offered through several University of Wisconsin campuses. Inmates are responsible for tuition costs and costs for books. Internal Management Procedure #23 includes specific policies for correspondence courses.

Perkins Grant

The DOC is designated as the agency that will administer Career and Technical Education (CTE) occupational programs for inmates in correctional facilities in Wisconsin. The DOC Office of Education, in carrying out the CTE programs for the incarcerated, gives special consideration:

1. To provide services to inmates, who are completing their sentences and preparing for release;
2. To provide CTE programs under the contracts with the WTCS districts for both men and women who are incarcerated;
3. To establish CTE programs in correctional facilities to add to their programming including minor and major equipment; and
4. To coordinate Career and Technical Education (occupational) services to inmates before and after their release in cooperation with the eligible recipients.

Funds may only be used for one or more of the following activities:

1. CTE programs including apprenticeship, which are based on labor market projections of future employment so that inmates shall receive training for new, emerging, nontraditional, and changing occupations;
2. Training and adoption of competency-based curriculum (WIDS) in CTE programs;
3. Purchase of major and minor equipment to meet or maintain parity in CTE programs and that the equipment pertains to the occupations that the inmates are preparing to enter after release; and,

4. Coordination of CTE services, in cooperation with other Perkins eligible recipients including the Technical College Districts, for inmates before and after their release.

LIBRARY SERVICES

Each DOC institution has a library whose services include a general collection, and a legal collection. Some institutions offer interlibrary loan services.

General Collection

The general collections include fiction and non-fiction books, reference materials, newspapers, magazines, and audio-visual materials. Some Spanish language and large print materials are available.

Interlibrary Loan Service

Inmates may use the interlibrary loan system to obtain materials that are not part of the institution's library. Interlibrary loan requests are screened to determine if the materials are in compliance with the institution's policies. Not all institutions participate in the interlibrary loan system, nor is it a mandated library service.

Legal Collection

Each library provides a legal collection in accordance with Administrative Code DOC 309.27. Included in the legal collection are state and federal reports and United States Code annotated.

Library staff will assist inmates unfamiliar with legal materials. Inmate law library clerks also provide assistance in some institutions. Services are extended to inmates in restricted housing status. DOC staff and inmate library clerks are neither able to, nor allowed to provide legal advice. Inmates may correspond with private attorneys on legal matters. Photocopy and notary services are provided by the library or other staff within each institution.

INMATE RELIGIOUS ACCOMODATION

Each facility provides inmate religious accommodation through available congregate programming and individual practice opportunities. Larger institutions have a Chaplain on staff that coordinates religious activities to meet the spiritual needs of a diverse inmate population. Smaller correctional centers have a designated staff member responsible for these duties.

Congregate religious programs may be provided for Umbrella Religion Groups (URG): Catholic, Eastern Religions, Humanist/Atheist/Agnostic, Islam, Judaism, Native American/American Indian, Pagan, and Protestant/Other Christian. Inmates wishing to participate in congregate worship or study groups identify which URG will most closely match their spiritual beliefs and practices by completing a DOC-1090, Religious Preference form. Types of URG programming vary between facilities due to

differences in inmate population and resources available, including community volunteers. DOC facilities depend upon volunteers and donations of religious materials to conduct the breadth of URG programming.

Individual religious practices may be accommodated through individual study, personal meditation, religious books and literature, approved religious property, approved religious observances in living quarters, work proscription, written correspondence with fellow believers and approved religious diets. Pastoral visits to provide individual spiritual counsel may be arranged as requested. Many facilities have a chapel library or religious books and resources available for inmate use.

Refer to DAI policies for further information:

- 309.61.01 – Religious Beliefs and Practices.
- 309.61.02 – Religious Property.
- 309.61.03 – Religious Diets.

BUREAU OF CORRECTIONAL ENTERPRISES

Badger State Industries and Correctional Farms

The Bureau of Correctional Enterprises (BCE) is an umbrella organization dedicated to providing inmates in institutions with employment and training opportunities, to do so profitably to relieve taxpayers of the burden of incarceration, and with minimal competition with private sector companies. Under the Bureau umbrella are Prison Industries, Correctional Farms, and various administrative sections. The revenues generated by these operations fund the Transition Program, also part of the Bureau organization.

Badger State Industries (BSI) is the DOC's manufacturing enterprise. BSI operates 11 industries in 10 different correctional facilities, providing vocational training and work skills development to inmates. BSI can provide a variety of products and services to a limited market of state and local governments and non-profit organizations. Correctional Farms operate at 5 locations throughout the state, with inmate workers from 4 different correctional facilities. The Farms supply milk, ice cream and sherbet to all of Wisconsin's correctional institutions using milk produced at its milking operations and processed at its Dairy.

A map of Badger State Industries and Correctional Farms locations can be found at:

<http://www.buybsi.com/images/PDF/MapofIndustries.pdf>.

A more detailed description of each BSI and Correctional Farms operation can be found at:

<http://doc.wi.gov/about/doc-overview/operations/division-of-adult-institutions/ops>.

Transition Program

Numerous studies focusing on the cycle of recidivism argue that stable employment is a strong indicator of preventing criminal activity, specifically for those who have already been incarcerated. With this in mind, the Transition Program is designed to help inmate workers capitalize on work

experiences and skills acquired during incarceration and to aid in employment readiness for post-incarceration. The Transition Program targets those inmates who have worked while incarcerated for BSI or Correctional Farms. Some of the services provided to Program participants prior to release are resume development; information on a variety of employment related subjects such as interview skills, job search strategies, maintaining employment, and telephone & email use; and providing community service listings specific to the participant's county of release. Additionally, Program staff offer information on other "everyday life" topics which can be of concern to offenders facing release, and can affect their ability to find and maintain employment, such as housing, transportation, and healthcare. Immediately prior to release participants are provided with a comprehensive listing of employment opportunities in their county/city of release, specific to the areas of employment they have indicated an interest or experience in. Following release, the Transition Program works with Agents to provide goods and services to participants which are critical to the participant finding and maintaining employment, such as transportation, clothing, job related tools, etc. Transition Program staff also serve as the point of contact for employment references for inmates' employment at BSI or Farms.

RE-ENTRY INITIATIVE

Pre-Release Curriculum

All facilities, irrespective of custody level, make the Pre-Release Curriculum available to inmates in a library or reentry resource room. Comprehensive and effective release planning will contribute to a successful transition into the community. Areas of focus might include but not be limited to topics such as, wellness, education, employment, family support, financial literacy, health, housing, personal development and transportation.

Pre-Release Curriculum Modules

Wellness Module 1: Identify healthy lifestyle and leisure activities: basic first aid and sexual education.

Education Module 2: Assess need for GED/HSED and/or feasibility of attaining higher education through tech school or university including exploration of financial aid options.

Employment Module 3: Evaluate transferable employment and self-management skills to assist in understanding and enhancing employment capabilities. Research career options and assist in career development. Identify barriers to employment and strategies or techniques to overcome them.

Family Support Module 4: Develop effective communication skills. Recognize importance of parent/child relationship. Understand dynamics of family support system. Address child support and/or other family court issues.

Financial Literacy Module 5: FDIC Money Smart –Addresses such areas as borrowing basics, credit, checking and savings accounts, budgeting, home ownership, insurance and taxes.

Health Module 6: Understand ways of maintaining mental and physical health. Determine health care needs and support services to address them. Determine eligibility for SSI/SSDI and other resources for the uninsured.

Housing Module 7: Identify housing options including residential, treatment, emergency, transitional, and long-term.

Personal Development Module 8: Includes goal setting, conflict resolution, stress management, coping skills and character development.

Transportation Module 9: Identify various modes such as carpool, cab, bus, bike, etc. Reinstate or secure driver's license and/or State ID.

Transitional Prep Module 10: Develop personalized portfolio. Community Reintegration Planning with social worker and assigned field agent plus any previously identified community support network.

WISCONSIN CORRECTIONAL INSTITUTIONS

Chippewa Valley Correctional Treatment Facility (CVCTF)

Chippewa Falls, Wisconsin

Primary Treatment Programs

- Earned Release Program (ERP)
- Anger Management (AM)
- Education
- Adult Basic Education (ABE/GED/HSED) Testing
- Other Services
- Pre-Release Services/Modules

Community Service Projects

- McDonnell High School-Painting and moving furniture
- Chippewa County Housing Authority-cleaning, painting, yard work
- Building Hope-Sorting donations and assisting with salvaging doors, ceiling tiles, trim work City of Bloomer-painting the water hydrants
- Irvine Park Zoo-Cleaning and racking animal cages
- Veteran's Assistance Program-Organizing donation in storage shed
- Jim Falls Sturgeon Fest - Putting up fencing and setting up for the Labor Day Weekend Festival as well as helping tear down and clean up
- Adopt a Highway – Picking up garbage
- Chippewa Valley Railroad – Painting, cleaning and helping repair the tracks
- Chippewa Youth Hockey Rink – General cleaning
- Irvine Park – Setting up holiday light displays, cutting brush
- Spring Fest, Northern Wisconsin State Fairground – Setting up and taking down tents
- The Past Passed Here – Setting up and taking down tents
- Bloomer Cemetery - Picking up brush and weed whacking

Columbia Correctional Institution (CCI)

Portage, Wisconsin

Primary Treatment

- Anger Management (AM)
- AODA Residential
- Thinking for a Change (T4C)

Education

- Adult Basic Education (ABE) / HSED
- Special Education (SPED)
- Career Technical Education (CTE)
- English as a Second Language (ESL)
- Other Services
- Special Management Unit (SMU)
- Pre-Release Services/Modules
- Forgiveness Group
- Mindfulness Group
- Long Distance Dads Program

Community Service Projects

- Crochet & Sewing Project
- Land's End Coat Project
- Lion's Club Eye Glass Project

Badger State Industries

- Printing Operation

Dodge Correctional Institution (DCI)

Waupun, Wisconsin

Primary Programming

- Thinking for a Change (T4C)

Other Services

- Special Management Unit (SMU)

Community Service Projects

- Craft Projects (Knitting)
- Craft Project (Drawings)
- Locks of Love

Fox Lake Correctional Institution (FLCI)

Fox Lake, Wisconsin

Primary Treatment Programs

- Domestic Violence (DV)
- Thinking for a Change (T4C)

Education

- Adult Basic Education (ABE) / HSED
- Career Technical Education (CTE)

- Title I
- Auto Maintenance
- Cabinet Making
- Custodial Service
- Food Services Production
- Horticulture
- Computer Assisted Drafting
- Computer Numerical Control (CNC)
- Small Engine Repair
- Masonry
- Welding

Other Services

- Pre-Release Services/Modules

Community Service Projects

- Craft Projects
- Donations Projects
- Woodworking Project

Badger State Industries

- Wood Furniture

Green Bay Correctional Center (GBCI)

Green Bay, Wisconsin

Primary Treatment Programs

- Anger Management (AM)
- Domestic Violence (DV)
- Thinking for a Change (T4C)

Education

- Adult Basic Education (ABE) / HSED
- Special Education (SPED)
- Career Technical Education (CTE)
- Title I
- English as a Second Language (ESL)
- Parenting
- Spanish Classes / Interpreters / Tutors (ABE)
- Wisconsin Institutions Literacy Council Program (WILC)
- Barbering/Cosmetology
- Cabinet Making
- Electrician
- Masonry
- Office Assistant/Aide
- Painting and Refinishing
- Other Services
- Other Services
- Special Management Unit (SMU)
- Pre-Release Services/Modules

Community Service Projects

- Masonry Projects
- Woodwork Projects

Badger State Industries

- Textile Operation
- Embroidery Operation

Jackson Correctional Institution (JCI)

Black River Falls, Wisconsin

Primary Treatment Programs

- Residential AODA
- Anger Management (AM)
- Domestic Violence (DV)
- Thinking for a Change (T4C)

Sex Offender Treatment Programs

- Sex Offender Treatment 2 (SO-2)
- Parenting

Education

- Adult Basic Education (ABE) / HSED
- Career Technical Education (CTE):
- Food Service / Culinary Arts
- Microcomputer Specialist
- Other Services
- Pre-Release Services/Modules

Community Service Projects

- Craft Projects
- The Memory Bear Project
- Produce Project
- Crocheting Project
- Jackson County American Cancer Society Cancer Run

Badger State Industries

- Signage Facility

Kettle Moraine Correctional Institution (KMCI)

Plymouth, Wisconsin

Primary Treatment Programs

- Residential AODA
- Anger Management (AM)
- Domestic Violence (DV)
- Thinking for a Change (T4C)

Sex Offender Treatment Programs

- Sex Offender Treatment 2 (SO-2)

Parenting

Education

- Adult Basic Education (ABE) / HSED
- Special Education (SPED)
- Career Technical Education (CTE)
- Title I
- English as a Second Language (ESL)
- Auto Maintenance
- Cabinet Making / Cabinetry
- Computer Assisted Drafting
- Custodial Service
- Masonry
- Welding

Other Services

- Pre-Release Services/Modules

Community Service Projects

- Restorative Justice Craft Project
- Locks of Love Project
- Crime Victim Awareness Week
- Woodworking Projects
- Welding Class Project

Milwaukee Secure Detention Facility (MSDF)

Milwaukee, Wisconsin

Primary Treatment Programs

- AODA Relapse
- AODA Alternative to Revocation (ATR)

AODA DV ATR

- Thinking for a Change (T4C)
- Parenting
- Education
- Adult Basic Education (ABE/GED/HSED) Testing

Community Service Projects

- Meal Fundraisers to benefit Community Programs

New Lisbon Correctional Institution (NLCI)

New Lisbon, Wisconsin

Primary Treatment Programs

- Anger Management (AM)
- Domestic Violence (DV)
- Thinking for a Change (T4C)

Sex Offender Treatment Programs

- Sex Offender Treatment (SO-2)

Education

- Adult Basic Education (ABE/HSED/GED) Testing
- Career Technical Education (CTE)

- Commercial Bakery
- Horticulture
- Computer Literacy
- College Math
- Math with Business Applications

Other Services

- Pre-Release Services/Modules

Community Service Projects

- Craft Projects
- Wood Carving Projects

Badger State Industries

- Sign Blank Recycling

Oakhill Correctional Institution (OCI)

Oregon, Wisconsin

Primary Treatment Programs

- AODA Residential (Dane County AGR and DAI Release Inmates Only)
- AODA Residential
- Thinking for a Change (T4C)

Rehabilitation Programs

- Windows to Work Madison Urban Ministry (MUM)
- Pre-Release Modules
- Trauma Group
- Men's Group
- Alcoholics Anonymous / Narcotics Anonymous / Circle of Recovery / SMART
- Madison Urban Ministry Reentry Program

Education

- Horticulture
- Building, Maintenance and Construction
- Food Sanitation Certification (ServSafe®)
- Pesticide Application Certification (PAT)
- DWD Certified Apprenticeship Programming
- Correspondence Courses

Other Services

- Work Release
- Pre-Release Services/Modules
- Read-To-Me Program

Community Service Projects

- Clean-Up / Set-Up Projects
- Second Harvest Donations
- Community Gardening (Children) Projects
- Inmate Fundraisers
- Inmate Panel Presentations
- Religious Programs
- Community Disaster Work Groups

- Military (Cool tie and Quilt tie) Project
- Retired Senior Volunteer Program (hats, scarves, and mittens)

Correctional Farms

- Oregon State Farms

Badger State Industries

- Upholstery Operation

Oshkosh Correctional Institution (OSCI)

Oshkosh, Wisconsin

Primary Treatment Programs

- AODA Residential
- AODA Dual Diagnosis
- AODA Alternative to Revocation (ATR)
- Anger Management (AM) (on hold)
- Domestic Violence (DV)
- Thinking for a Change (T4C)

Sex Offender Treatment Programs

- Sex Offender Treatment (SO-2)
- Sex Offender Treatment (SO-4)
- Sex Offender Treatment (SO-4) Low Functioning

Education

- Adult Basic Education (ABE/GED/HSED) Testing
- Career Technical Education (CTE)
- English as a Second Language
- Braille Transcription
- Building, Maintenance, and Construction
- Practical Computer Skills
- Food Service/Culinary Arts
- Institution Food Production
- Horticulture
- Multi-Occupational Aide
- Office Software Applications

Other Services

- Pre-Release Services/Modules

Community Service Projects

- Craft / Knitting Projects
- Food Pantry Donations from Horticulture Program
- OccuPaws Service Dog Program
- Miscellaneous Projects

Badger State Industries

- Laundry Operation

Prairie du Chien Correctional Institution (PDCI)

Prairie du Chien, Wisconsin

Primary Treatment Programs

- AODA Residential
- Earned Release Program (ERP)
- Domestic Violence (DV)
- Thinking for a Change (T4C)

Parenting

Mindfulness

Education

- Adult Basic Education (ABE/GED/HSED) Testing
- Special Education (SPED)
- Career Technical Education (CTE)
- Title I
- English as a Second Language (ESL)
- LEP Classes / Interpreters / Tutors (ABE)
- Building, Maintenance, and Construction (On Hold)
- Masonry
- Office Software Applications
- Computer Literacy

Other Services

- Pre-Release Services/Modules

Community Service Projects

- Miscellaneous Projects
- Craft Projects

Racine Correctional Institution (RCI)

Racine, Wisconsin

Primary Treatment Programs

- Earned Release Program (ERP)
- Anger Management (AM)
- Domestic Violence (DV)
- Thinking for a Change (T4C)

Sex Offender Treatment Programs

- Sex Offender Treatment (SO-2)
- Sex Offender Treatment (SO-2) Spanish-Speaking
- Sex Offender Treatment (SO-4)
- Sex Offender Treatment - Alternative to Revocation (ATR)

Education

- Adult Basic Education (ABE/GED/HSED) Testing
- Career Technical Education (CTE)
- English as a Second Language (ESL)
- Computer Numerical Control (CNC)
- Spanish Classes / Interpreters / Tutors (ABE)

- Food Service / Culinary Arts
- Business Applications

Parenting

Community Service Projects

- Craft Projects
- Teddy Bear Project
- Inmate Hobby Project
- Religious Programs

Other Services

- Pre-Release Services/Modules

Racine Youthful Offender Correctional Facility (RYOCF)

Racine, Wisconsin

Primary Treatment Programs

- AODA Residential
- Anger Management (AM)
- Domestic Violence (DV)
- Thinking for a Change (T4C)

Sex Offender Treatment Programs

- Sex Offender Treatment (SO-2)

Education

- Adult Basic Education (ABE/GED/HSED) Testing
- Special Education (SPED)
- Career Technical Education (CTE)
- Title I
- Computer Numerical Control (CNC)
- Computer Help Desk
- Masonry

Parenting

Other Services

- Pre-Release Services/Modules
- Personal Enrichment Programs-Conflict Resolution
- Tutoring via ProLiteracy America

Community Service Projects

- Craft Projects
- Produce Project
- Art Class Project

Redgranite Correctional Institution (RGCI)

Redgranite, Wisconsin

Primary Treatment Programs

- Anger Management (AM)
- Domestic Violence (DV)
- Thinking for a Change (T4C)

Sex Offender Treatment Programs

- Sex Offender Treatment (SO-2)

Education

- Adult Basic Education (ABE/GED/HSED) Testing
- Career Technical Education (CTE)
- English as a Second Language (ESL)
- Baking Fundamentals
- Office Software Applications

Other Services

- Pre-Release Services/Modules

Community Service Projects

- Crochet / Sewing Projects
- Craft Projects
- Produce Project
- Inmate Labor Projects

Badger State Industries

- Wheelchair Recycling Operation

Stanley Correctional Institution (SCI)

Stanley, Wisconsin

Primary Treatment Programs

- Anger Management (AM)
- Domestic Violence (DV)
- Thinking for a Change (T4C)

Sex Offender Treatment

- Sex Offender Treatment (SO-2)

Education

- Adult Basic Education (ABE/GED/HSED) Testing
- Career Technical Education (CTE)
- English as a Second Language
- Correspondence Courses
- Computer Aided Drafting
- Custodial Service
- Office Assistant/Aide

Other Services

- Pre-Release Services/Modules

Community Service Projects

- SCOPE Project
- Inmate Run/Walk Project
- Garden Project

Badger State Industries

- Signage Operation

Sturtevant Transitional Facility (STF)

Sturtevant, Wisconsin

Primary Treatment Programs

- Anger Management (AM)
- Thinking for a Change (T4C)

Education

- Adult Basic Education (ABE/GED/HSED) Testing
- Custodial Services

Other Services

- Work Release
- Pre-Release Services/Modules

Waupun Correctional Institution (WCI)

Waupun, Wisconsin

Primary Treatment Programs

- Anger Management
- Domestic Violence
- Thinking for a Change (T4C)

Education

- Adult Basic Education (ABE/GED/HSED) Testing
- Career Technical Education (CTE)
- Parenting
- Building, Maintenance, and Construction
- Computer Literacy
- Correspondence Courses

Other Services

- ProLiteracy America Tutoring Project
- Special Management Unit (SMU)
- Pre-Release Services/Modules

Community Service Projects

- Knitting & Crochet Projects
- Toy Project
- Building, Maintenance, and Construction Projects

Badger State Industries

- Metal Furniture
- Systems Furniture
- License Plate Operation

Wisconsin Secure Program Facility (WSPF)

Boscobel, Wisconsin

Primary Treatment Programs

- Domestic Violence (DV)
- Anger Management (AM)

- Thinking for a Change (T4C)

Additional Programs Offered

- New Freedom-PSU
- HROP-High Risk Offender programs
- Interactive Journaling
- Cognitive Based Workbooks

Parenting

Education

- Adult Basic Education (ABE/GED/HSED) Testing
- Special Education (SPED)
- Career Technical Education (CTE)
- Cosmetology

Other Services

- Pre-Release Services/Modules

Community Service Projects

- Crochet/Sewing Projects
- Craft Projects
- Gardening Projects
- Religious Programs

WISCONSIN CORRECTIONAL CENTER SYSTEM

Black River Falls Correctional Center (BRCC)

Black River Falls, Wisconsin

Primary Treatment Programs

- Earned Release Program (ERP) Low Risk

Education

- Adult Basic Education (ABE/GED/HSED) Testing
- Career Technical Education (CTE)
- Title I

Other Services

- Pre-Release Services/Modules

Community Service Projects

- Inmate Labor Projects
- Fundraisers

Drug Abuse Correctional Center (DACC)

Winnebago, Wisconsin

Primary Treatment Programs

- Earned Release Program (ERP)
- Earned Release Program (ERP) Low-Risk

Education

- Adult Basic Education (ABE/GED/HSED) Testing

Other Services

- Pre-Release Services/Modules

Community Service Projects

- Inmate Labor Projects
- Inmate Public Speaking Project & Victim Impact Panels

Felmers O. Chaney Correctional Center (FCCC)

Milwaukee, Wisconsin

Education

- Adult Basic Education (ABE/GED/HSED) Testing

Parenting

Other Services

- Work Release
- Drivers Education Program
- Pre-Release Services/Modules

Community Service Projects

- Inmate Labor Projects
- Community Cookies

Flambeau Correctional Center (FCC)

Hawkins, Wisconsin

Primary Treatment Programs

- AODA Residential
- AODA Alternative to Revocation (ATR)
- Thinking for a Change (T4C)

Education

- Adult Basic Education (ABE) / HSED

Other Services

- Pre-Release Services/Modules

Community Service Projects

- Inmate Labor Projects
- Woodshop Donation Project

Gordon Correctional Center (GCC)

Gordon, Wisconsin

Education

- Adult Basic Education (ABE/GED/HSED) Testing

Other Services

- Work Release
- Pre-Release Services/Modules
- Serv Safe Certification Program
- Breaking Barriers Reentry Program

Community Service Projects

- Inmate Labor Projects

John C. Burke Correctional Center (JBCC)

Waupun, Wisconsin

Education

- Adult Basic Education (ABE/GED/HSED) Testing
- Title I
- Prep Cook Apprenticeship Program (On the Job Training Only)

Other Services

- Pre-Release Services/Modules
- Serv Safe Certification Program
- Work Release

Community Service Projects

- Inmate Craft Projects
- Inmate Labor Projects
- Inmate Public Speaking Project & Victim Impact Panels

Badger State Industries

- Badger State Logistics

Kenosha Correctional Center (KCC)

Kenosha, Wisconsin

Education

- Adult Basic Education (ABE/GED/HSED) Testing (**Part-Time**)

Other Services

- Pre-Release Services/Modules
- Work Release

Community Service Projects

- Inmate Craft Projects
- Inmate Labor Projects

Badger State Industries

- Badger State Logistics

Community Service Projects

- Inmate Labor Projects
- Inmate Public Speaking Project

McNaughton Correctional Center (MCC)

Lake Tomahawk, Wisconsin

Education

- Adult Basic Education (ABE/GED/HSED) Testing (Part-Time)
- Drivers Education
- Parenting

Other Services

- Work Release
- Pre-Release Services/Modules

Community Service Projects

- Inmate Labor Projects

Marshall Sherrer Correctional Center (MSCC)

Milwaukee, Wisconsin

Education

- Adult Basic Education (ABE/GED/HSED) Testing
- Drivers Education
- Parenting

Other Services

- Work Release
- Woodshop Instruction
- Pre-Release Services/Modules

Community Service Projects

- Inmate Public Speaking Projects

Oregon Correctional Center (OCC)

Oregon, Wisconsin

Other Services

- Work Release
- Woodshop Instruction
- Pre-Release Services/Modules
- Drivers Education
- Parenting Classes

Community Service Projects

- Inmate Public Speaking Projects

Sanger Powers Correctional Center (SPCC)

Oneida, Wisconsin

Other Services

- Pre-Release Services/Modules
- Work Release
- Drivers Education

Community Service Projects

- REBOUND & LEADER Dog Training Programs
- Inmate Labor Projects
- Inmate Public Speaking Projects

Thompson Correctional Center (TCC)

Deerfield, Wisconsin

Education

- Adult Basic Education (ABE/GED/HSED) Testing
- Drivers Education

Other Services

- Pre-Release Services/Modules
- Work Release

Community Service Projects

- LEARN Dog Rescue Network
- Inmate Labor Projects

Winnebago Correctional Center (WCC)

Winnebago, Wisconsin

Other Services

- Pre-Release Services/Modules
- Work Release
- Drivers Education

Community Service Projects

- Inmate Labor Projects
- Produce Projects

WISCONSIN WOMENS CORRECTIONAL CENTER SYSTEM

Milwaukee Women's Correctional Center (MWCC)

Milwaukee, Wisconsin

Primary Treatment Programs

- Earned Release Program (ERP)
- AODA Relapse

Education

- Adult Basic Education (ABE/GED/HSED) Testing

Services

- Work Release
- Pre-Release Services/Modules

Community Service Projects

- Inmate Craft Projects
- Garden & Produce Projects
- Salvation Army Projects

Robert E. Ellsworth Correctional Center (REECC)

Union Grove, Wisconsin

Primary Treatment Programs

- AODA Residential
- AODA Relapse
- AODA ATR
- Earned Release Program (ERP)
- Earned Release Program (ERP) Low Risk
- Anger Management (AM)
- Thinking for a Change (T4C)

Violence in Relationships

Parenting

Education

- Adult Basic Education (ABE/GED/HSED) Testing
- Special Education (SPED) (On Hold)
- Career Technical Education (CTE)
- Office Software Applications

Other Services

- Work Release
- Pre-Release Services/Modules

Community Service Projects

- Inmate Craft Projects
- Inmate Labor Projects

St. Croix Correctional Center (SCCC) (female)

New Richmond, Wisconsin

Primary Treatment Programs

- AODA Residential
- Earned Release Program (ERP)
- Challenge Incarceration Program (CIP)
- Anger Management (AM)
- Thinking for a Change (T4C)

Education

- Adult Basic Education (ABE/GED/HSED) Testing
- Title I

Other Services

- Pre-Release Services/Modules

Community Service Projects

- Inmate Public Speaking & Victim Impact Projects
- Inmate Labor Projects

Taycheedah Correctional Institution (TCI)

Fond du Lac, Wisconsin

Primary Treatment Programs

- AODA Relapse (on hold)
- AODA Residential
- AODA Dual Diagnosis
- AODA Alternative to Revocation (ATR)
- Anger Management (AM)
- Thinking for a Change (T4C)

Sex Offender Treatment Program

- Sex Offender Treatment (SO-2)
- Sex Offender Treatment (SO-2) Low Functioning
- Sex Offender Treatment (SO-4) Residential/Intensive

Violence In Relationships

Education

- Adult Basic Education (ABE/GED/HSED) Testing
- Special Education (SPED)
- Career Technical Education (CTE)
- Title I
- English as a Second Language (ESL)
- Barbering / Cosmetology
- Building, Maintenance, and Construction
- Dental Lab Technician
- Office Software Applications

Other Services

- Special Management Unit (SMU)
- Pre-Release Services/Modules

Community Service Projects

- Inmate Craft Projects
- Victim Impact Projects
- Salvation Army Projects
- Garden & Produce Projects